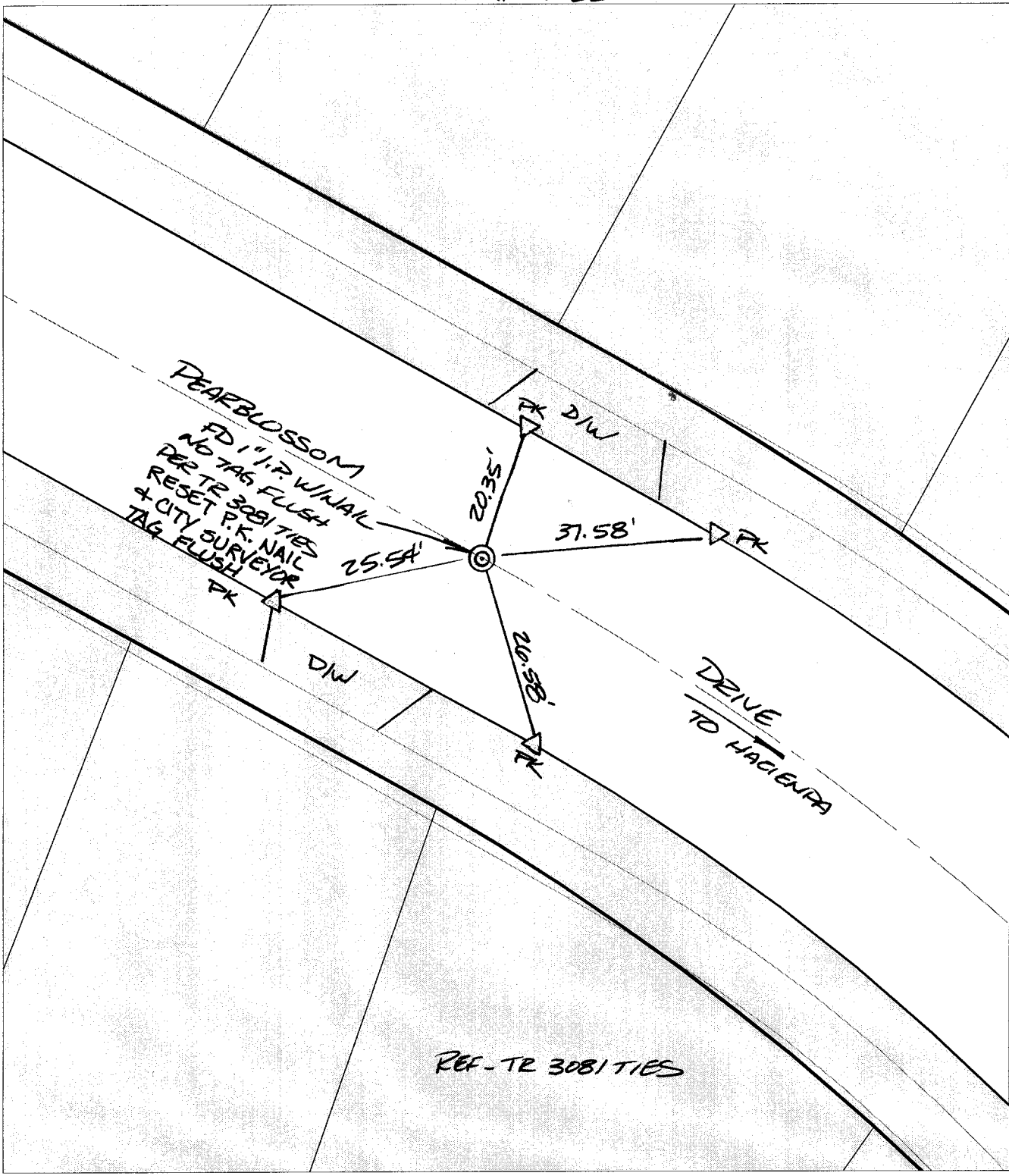


SWING TIES



PEARBLOSSOM
 FD 1" I.P. W/NAIL
 NO TAG FLUSH
 REF-TR 3081 TIES
 RESET P.K. NAIL
 + CITY SURVEYOR
 TAG FLUSH
 PK

- ✕ FD. Ramset Nail on T/C
 - FD. LD. & TK. on T/C
 - FD. "C" Nail on T/C
 - Set LD. & TK. on T/C
- P.K. and City Engineer tag to be set @ surface after street construction is complete. (If possible)

Scale: 1" = 20'
 Date: 05/09/02
 Drawn by: bmark
 F.B.:
 TR-Sec: T2SR4W-29

OFFICIAL TIE PLAT

CITY OF RIVERSIDE

These ties are for the purpose of perpetuating the found monumentation. No claim is made as to the relationship of the points or lines shown hereon to true boundary locations.

