

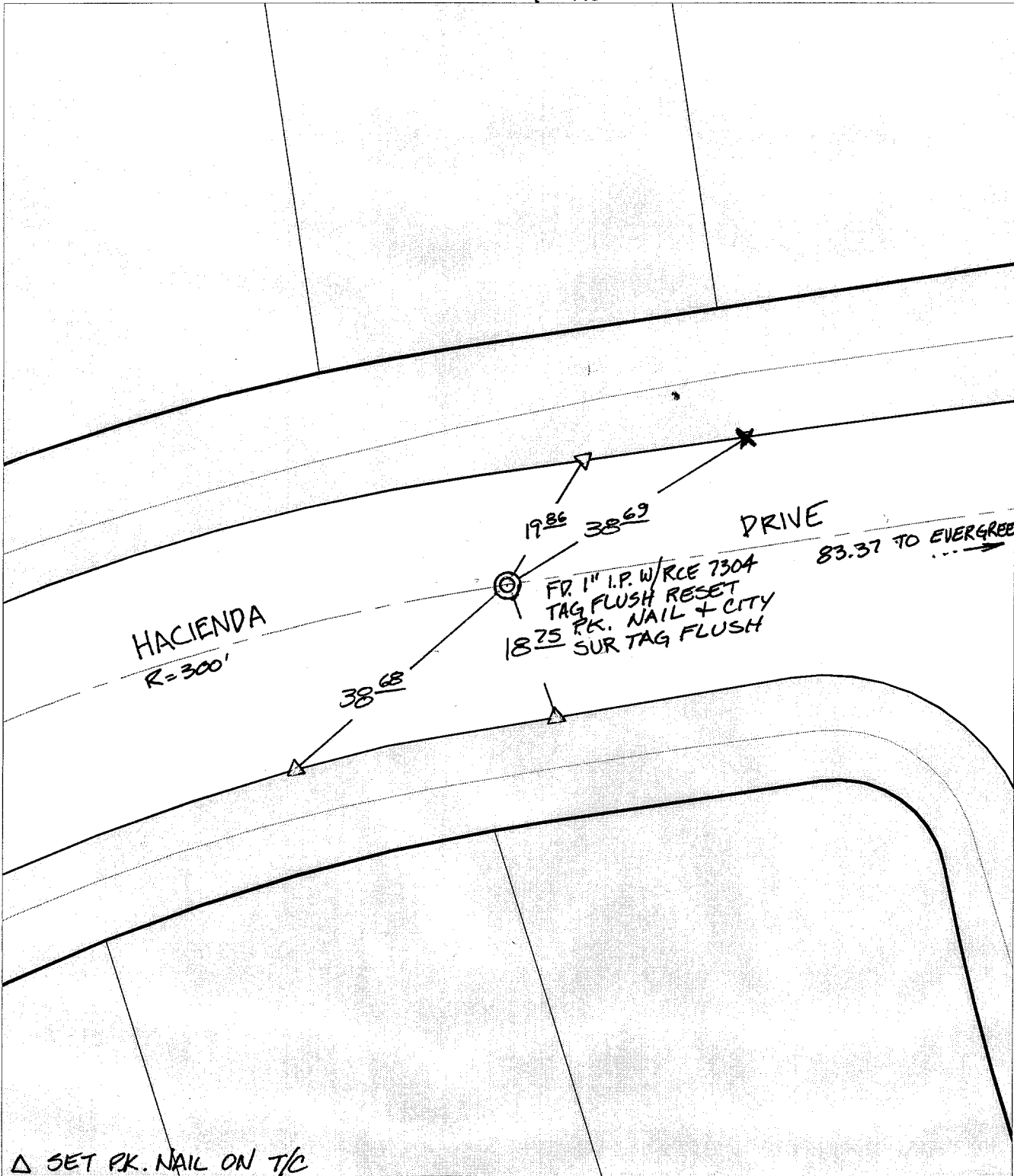
Street:

HACIENDA DR

OFFICIAL USE ONLY

X-Street: EC W'LY OF EVERGREEN

SWING TIES



△ SET PK. NAIL ON T/C

- ✕ FD. Ramset Nail on T/C
- FD. "C" Nail on T/C

- FD. LD. & TK. on T/C
- Set LD. & TK. on T/C

P.K. and City Engineer tag to be set @ surface after street construction is complete. (If possible)

Scale: 1" = 20'
 Date: 05/20/02
 Drawn by: survey
 F.B.:
 TR-Sec: T2SR4W-29

OFFICIAL TIE PLAT

CITY OF RIVERSIDE

These ties are for the purpose of perpetuating the found monumentation. No claim is made as to the relationship of the points or lines shown hereon to true boundary locations.



Sheet 1 of 1
 Cadme MB: 42.7