

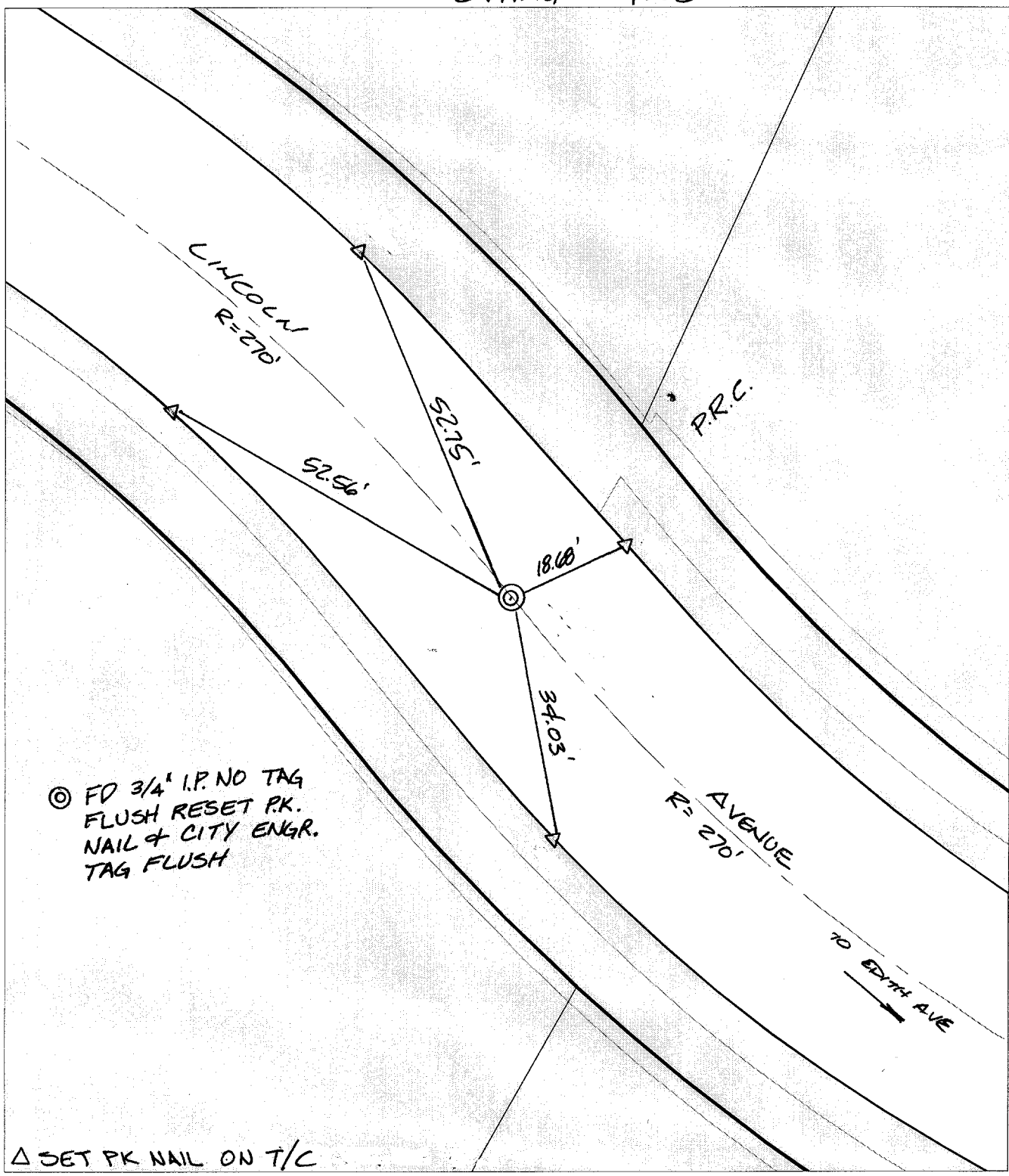
Street:

LINCOLN AVE

OFFICIAL USE ONLY

X-Street: PRC NW OF EDITH AVE

SWING TIES



© FD 3/4" I.P. NO TAG
 FLUSH RESET P.K.
 NAIL & CITY ENGR.
 TAG FLUSH

△ SET PK NAIL ON T/C

- × FD. Ramset Nail on T/C
- FD. LD. & TK. on T/C
- FD. "C" Nail on T/C
- Set LD. & TK. on T/C

P.K. and City Engineer tag to be set @
 surface after street construction is
 complete. (If possible)

Scale: 1" = 20'
 Date: 07/19/02
 Drawn by: scurtis
 F.B.:
 TR-Sec: T3SR5W-2

OFFICIAL TIE PLAT

CITY OF RIVERSIDE

*These ties are for the purpose of perpetuating the found
 monumentation. No claim is made as to the relationship of
 the points or lines shown hereon to true boundary locations.*



Sheet 1 of 1
 Cadme MB: 54-6