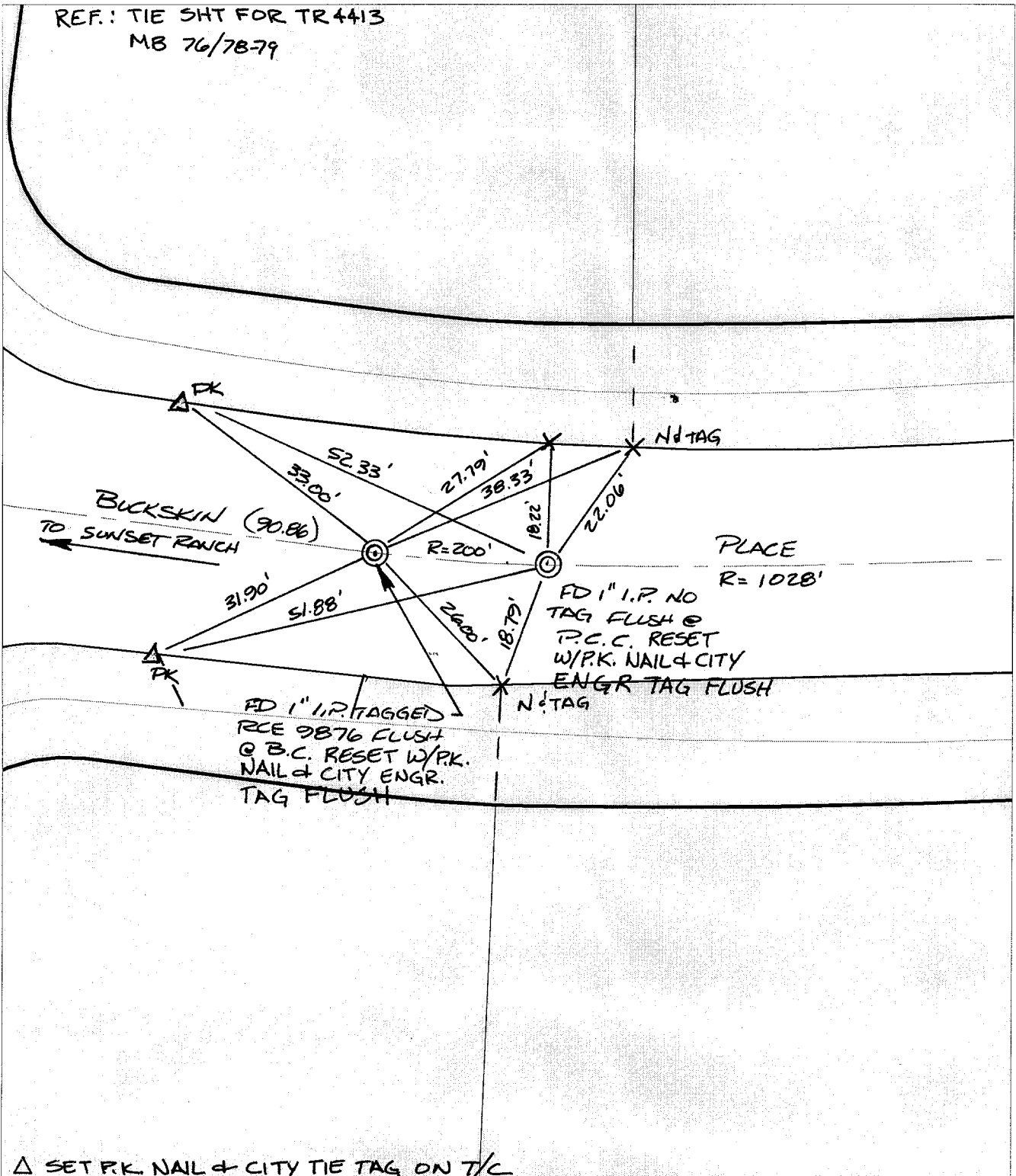


SWING TIES

REF.: TIE SHT FOR TR 4413  
MB 76/78-79



△ SET P.K. NAIL & CITY TIE TAG ON T/C

- × FD. Ramset Nail on T/C    ● FD. LD. & TK. on T/C
- FD. "C" Nail on T/C      ○ Set LD. & TK. on T/C

P.K. and City Engineer tag to be set @ surface after street construction is complete. (if possible)

Scale: 1" = 20'

Date: 07/19/02

Drawn by: survey

F.B.:

TR-Sec: T3SR5W-1

# OFFICIAL TIE PLAT

## CITY OF RIVERSIDE

*These ties are for the purpose of perpetuating the found monumentation. No claim is made as to the relationship of the points or lines shown hereon to true boundary locations.*



Sheet 1 of 1

Cadme MB: 55-6