

11472 TIF

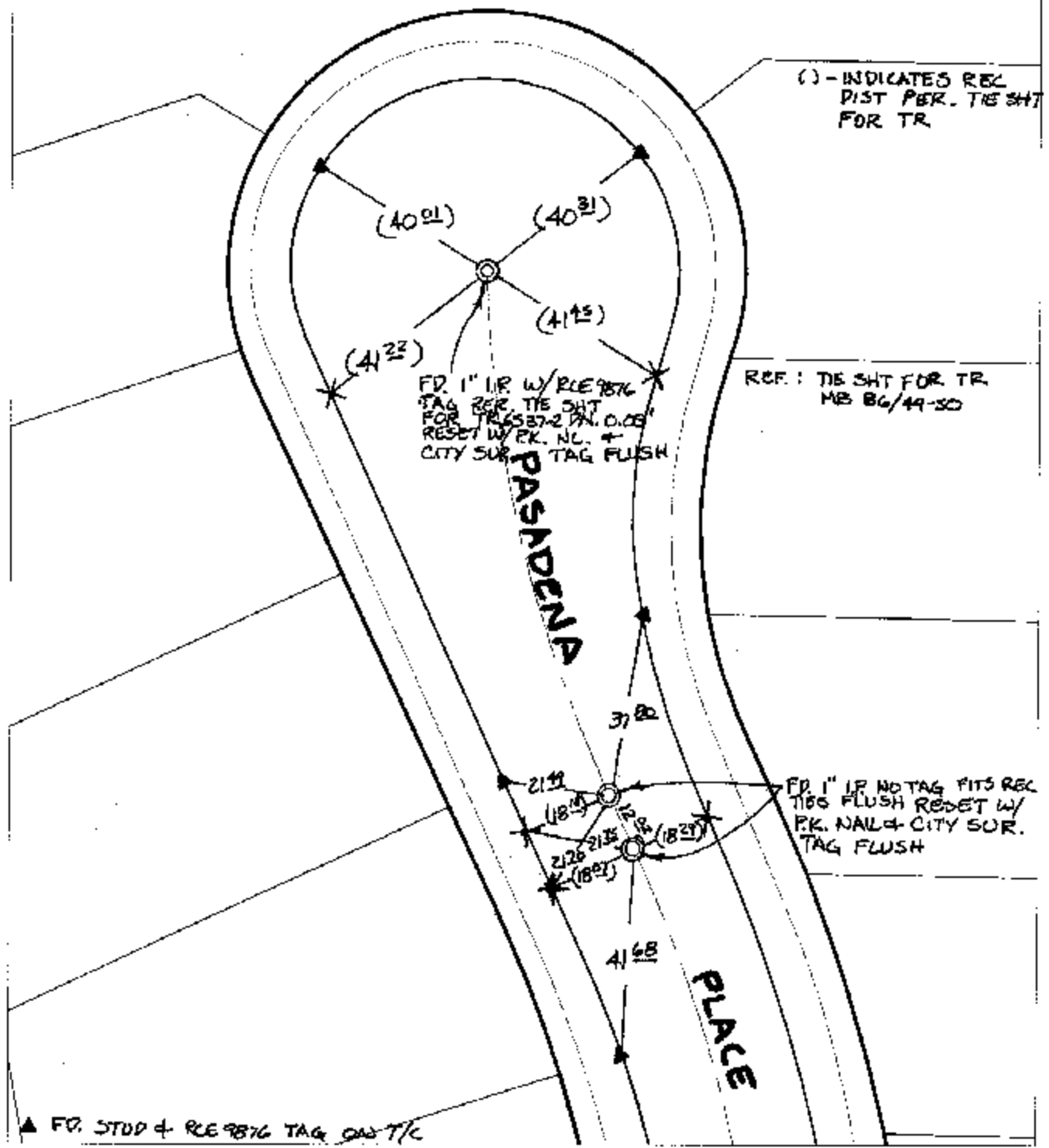
Street:

PASADENA PLACE

X-Street:
OFFICIAL USE ONLY

CUL-DE-SAC

SWING & TRANSIT TIES



() - INDICATES REC DIST PER. TIE SHIT FOR TR.

REF: TIE SHIT FOR TR MB 86/44-50

FD. 1" I.P. W/ RCE 9876 TAG REC. TIE SHIT FOR TR. 6587-2 IN. O.05" RESET W/ P.K. NAIL & CITY SUR. TAG FLUSH

FD. 1" I.P. NO TAG FITS REC TIES FLUSH RESET W/ P.K. NAIL & CITY SUR. TAG FLUSH

▲ FD. STOD & RCE 9876 TAG ON T/C

- ✕ FD. Ramset Nail on T/C
- FD. "C" Nail on T/C
- FD. LD. & TK. on T/C
- Set LD. & TK. on T/C

P.K. and City Engineer tag to be set @ surface after street construction is complete. (if possible)

Scale: 1" = 30'

Date: 08/20/02

Drawn by: SURVEY

F.B.:

TR-Sec: T2SR6W-35

OFFICIAL TIE PLAT
CITY OF RIVERSIDE

These ties are for the purpose of perpetuating the found monumentation. No claim is made as to the relationship of the points or lines shown hereon to true boundary locations.



Sheet 1 of 1
Cadme MB: 34-8