

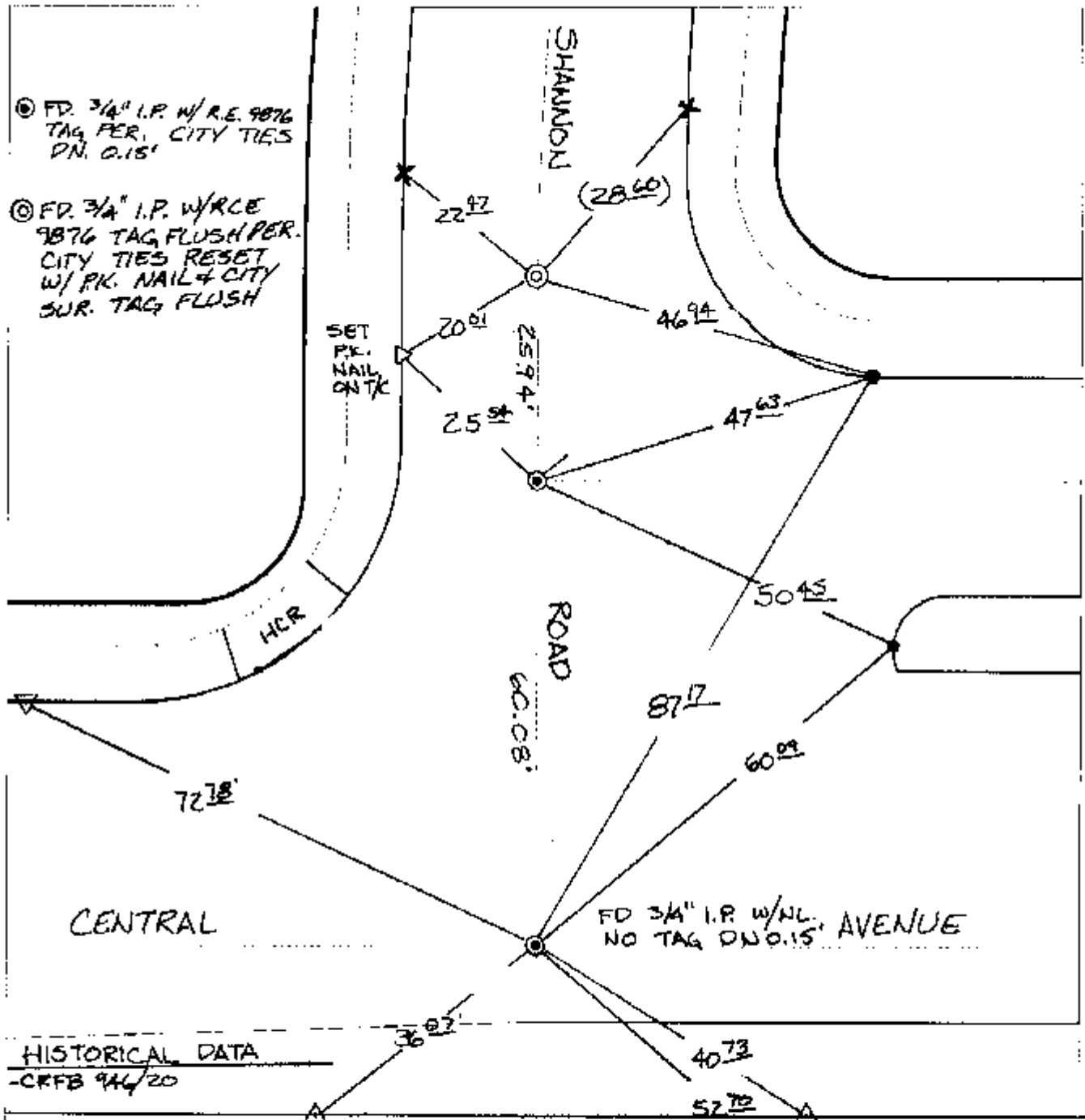
11477, TIE

Street:

CENTRAL AVENUE

X-Street: OFFICIAL USE ONLY

SHANNON ROAD



⊙ FD. 3/4" I.P. W/ R.E. 9876 TAG PER. CITY TIES DN. 0.15'

⊙ FD. 3/4" I.P. W/RCE 9876 TAG FLUSH PER. CITY TIES RESET W/ PK. NAIL & CITY SUR. TAG FLUSH

SET PK. NAIL ON TK

(28.60)

SHANNON

ROAD 60.08'

CENTRAL

FD 3/4" I.P. W/NL. NO TAG DN. 0.15' AVENUE

HISTORICAL DATA - CRFB 9/4/20

SET "X" CHISEL ON TOP OF NELY BOLT OF ST. LIGHT BASE

- × FD. Ramset Nail on T/C
- FD. LD. & TK. on T/C
- FD. "C" Nail on T/C
- Set LD. & TK. on T/C

P.K. and City Engineer tag to be set @ surface after street construction is complete. (if possible)

Scale: 1" = 20'

Date: 06/28/02

Drawn by: SURVEY

F.B.:

TR-Sec: T2SR5W-32

## OFFICIAL TIE PLAT

### CITY OF RIVERSIDE

*These ties are for the purpose of perpetuating the found monumentation. No claim is made as to the relationship of the points or lines shown hereon to true boundary locations.*



Sheet 1 of 1

Cadme MB: 51-2