

11481.TIF

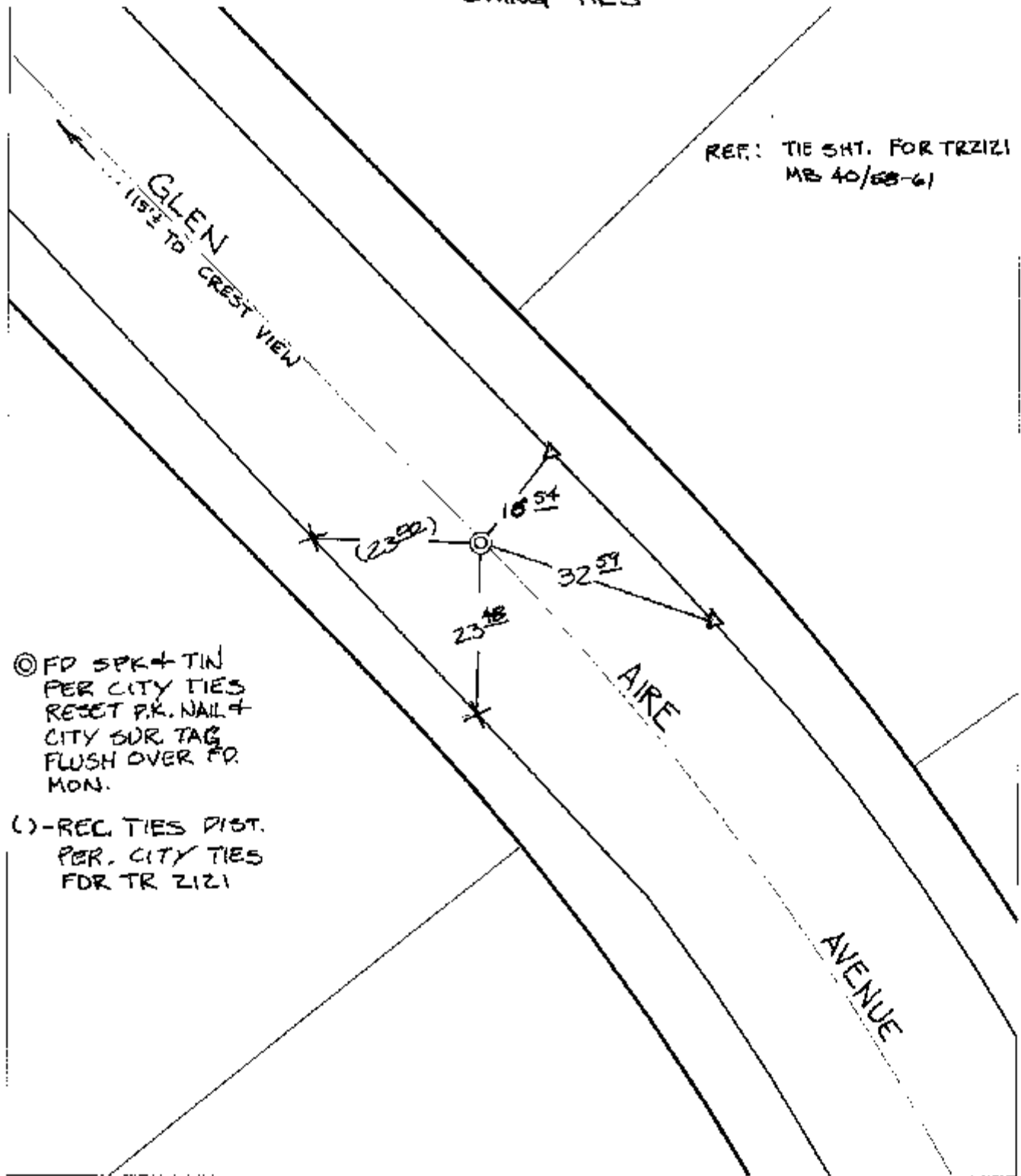
Street:

GLEN AIRE AVENUE

X-Street: E.C.S. OF CREST VIEW
OFFICIAL USE ONLY

SWING TIES

REF: TIE SH. FOR TRZIZI
MB 40/68-61



⊙ FD SPR + TIN
 PER CITY TIES
 RESET P.K. NAIL +
 CITY SUR. TAG
 FLUSH OVER FD.
 MON.

() - REC. TIES DIST.
 PER. CITY TIES
 FOR TR ZIZI

- ✕ FD. Ramset Nail on T/C
- FD. LD. & TK. on T/C
- FD. "C" Nail on T/C
- Set LD. & TK. on T/C

P.K. and City Engineer tag to be set @
 surface after street construction is
 complete. (if possible)

Scale: 1" = 20'
 Date: 07/10/02
 Drawn by: Survey
 F.B.:
 TR-Sec: T3SR4W-6

OFFICIAL TIE PLAT

CITY OF RIVERSIDE

*These ties are for the purpose of perpetuating the found
 monumentation. No claim is made as to the relationship of
 the points or lines shown hereon to true boundary locations.*



Sheet 1 of 1
 Cadme MB: 71-1