

Street:

GOODMAN STREET

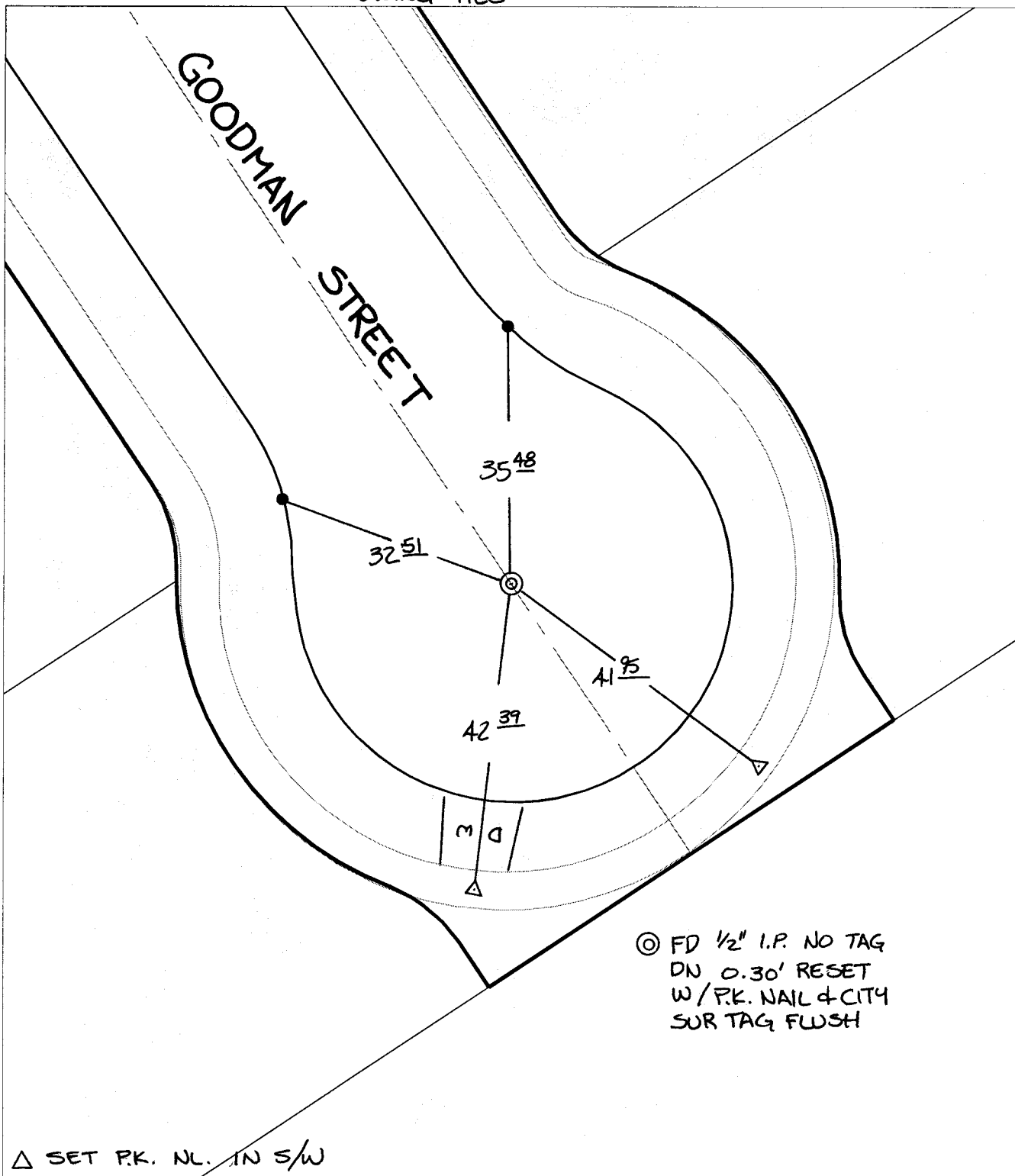
X-Street:

CUL-DE-SAC

OFFICIAL USE ONLY

SWING TIES

GOODMAN STREET



⊗ FD 1/2" I.P. NO TAG
 DN 0.30' RESET
 W/P.K. NAIL & CITY
 SUR TAG FLUSH

△ SET P.K. NL. IN S/W

- ⊗ FD. Ramset Nail on T/C ● FD. LD. & TK. on T/C
- FD. "C" Nail on T/C ○ Set LD. & TK. on T/C

P.K. and City Engineer tag to be set @
 surface after street construction is
 complete. (If possible)

Scale: 1" = 20'

Date: 01/27/04

Drawn by: scurtis

F.B.:

TR-Sec: T3SR5W-7

OFFICIAL TIE PLAT

CITY OF RIVERSIDE

*These ties are for the purpose of perpetuating the found
 monumentation. No claim is made as to the relationship of
 the points or lines shown hereon to true boundary locations.*



Sheet 1 of 1

Cadme MB: 66-1