

C11885.T1F

Street:

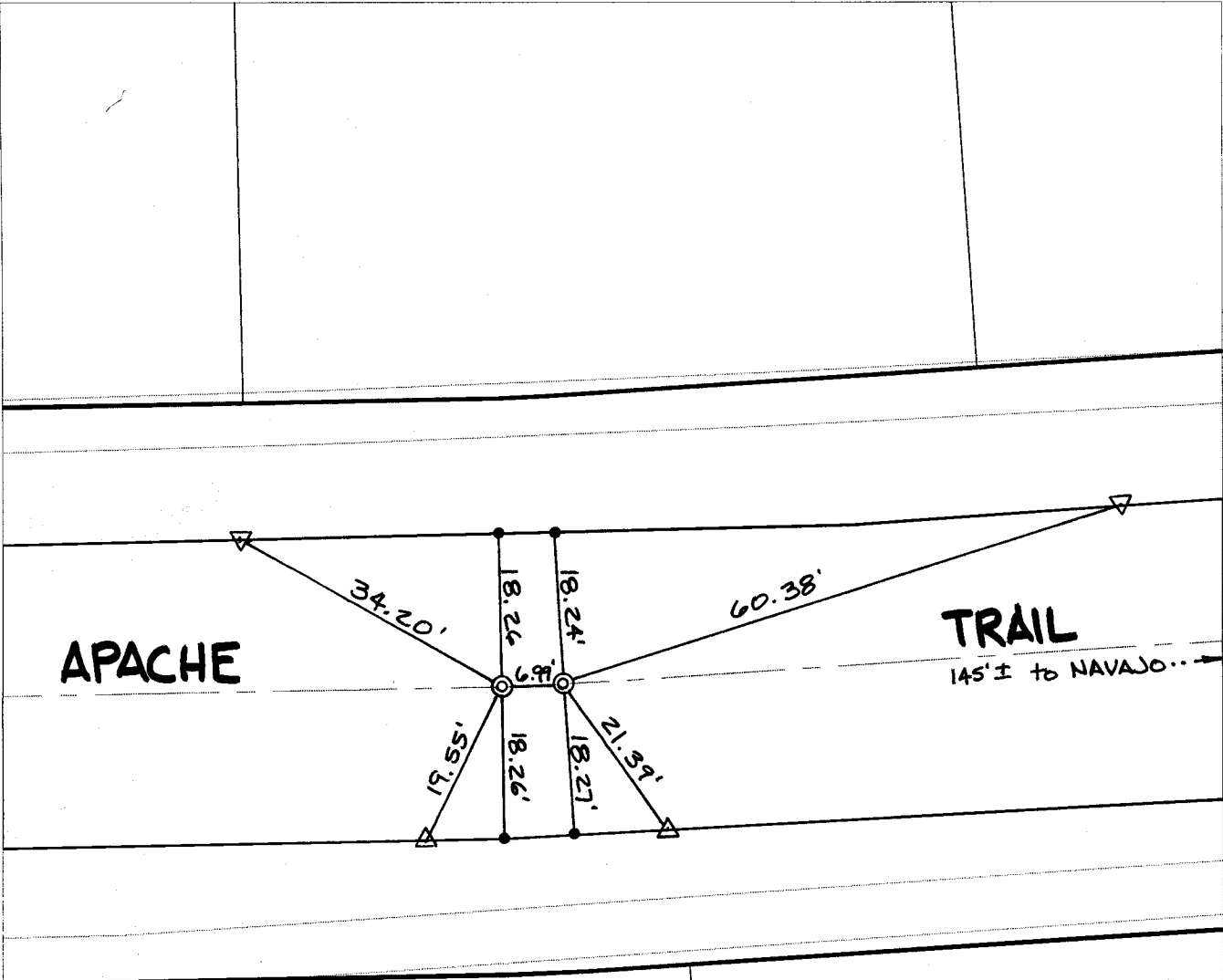
APACHE TRAIL

OFFICIAL USE ONLY

X-Street:

B.C. & E.C.

TRANSIT & SWING TIES



APACHE

TRAIL

145'± to NAVAJO...

⊙ FD SPK. W/PUNCH
 MARK & TIN FLASHER
 FLUSH NO REF. RESET
 W/P.K. NL. & CITY SUR.
 TAG FLUSH

△ SET "C" W/CITY TIE TAGS ON T/C

- × FD. Ramset Nail on T/C ● FD. LD. & TK. on T/C P.K. and City Engineer tag to be set @ surface after street construction is complete. (If possible)
- FD. "C" Nail on T/C ○ Set LD. & TK. on T/C

Scale: 1" = 20'
 Date: 01/09/03
 Drawn by: scurtis
 F.B.:
 TR-Sec: T2SR4W-29

OFFICIAL TIE PLAT
CITY OF RIVERSIDE

These ties are for the purpose of perpetuating the found monumentation. No claim is made as to the relationship of the points or lines shown hereon to true boundary locations.

Sheet 1 of 1
 Cadme MB: 42-7