

C:\1888.TIF

Street:

COUNTRY CLUB DRIVE

X-Street:

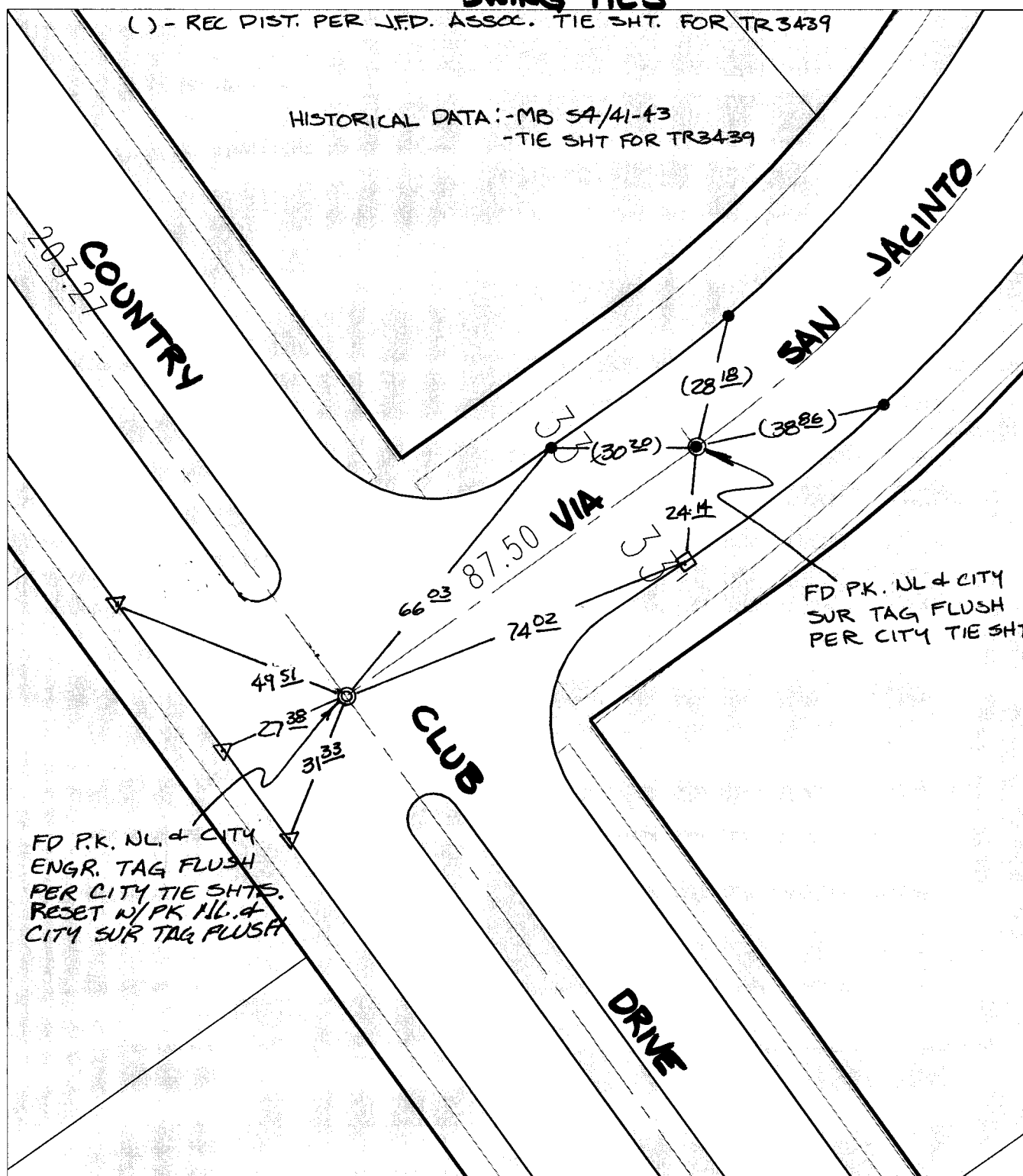
SAN JACINTO

OFFICIAL USE ONLY

SWING TIES

() - REC. DIST. PER J.F.D. ASSOC. TIE SHT. FOR TR3439

HISTORICAL DATA: -MB 54/41-43
-TIE SHT FOR TR3439



FD P.K. NL & CITY ENGR. TAG FLUSH PER CITY TIE SHTS. RESET W/PK NL & CITY SUR TAG FLUSH

FD P.K. NL & CITY SUR TAG FLUSH PER CITY TIE SHTS

- ✕ FD. Ramset Nail on T/C
- FD. "C" Nail on T/C

- FD. LD. & TK. on T/C
- Set LD. & TK. on T/C

P.K. and City Engineer tag to be set @ surface after street construction is complete. (If possible)

Scale: 1" = 30'

Date: 02/06/04

Drawn by: SURVEY

F.B.:

TR-Sec: T2SR4W-31

OFFICIAL TIE PLAT

CITY OF RIVERSIDE

These ties are for the purpose of perpetuating the found monumentation. No claim is made as to the relationship of the points or lines shown hereon to true boundary locations.



Sheet 1 of 1

Cadme MB: 56-3