

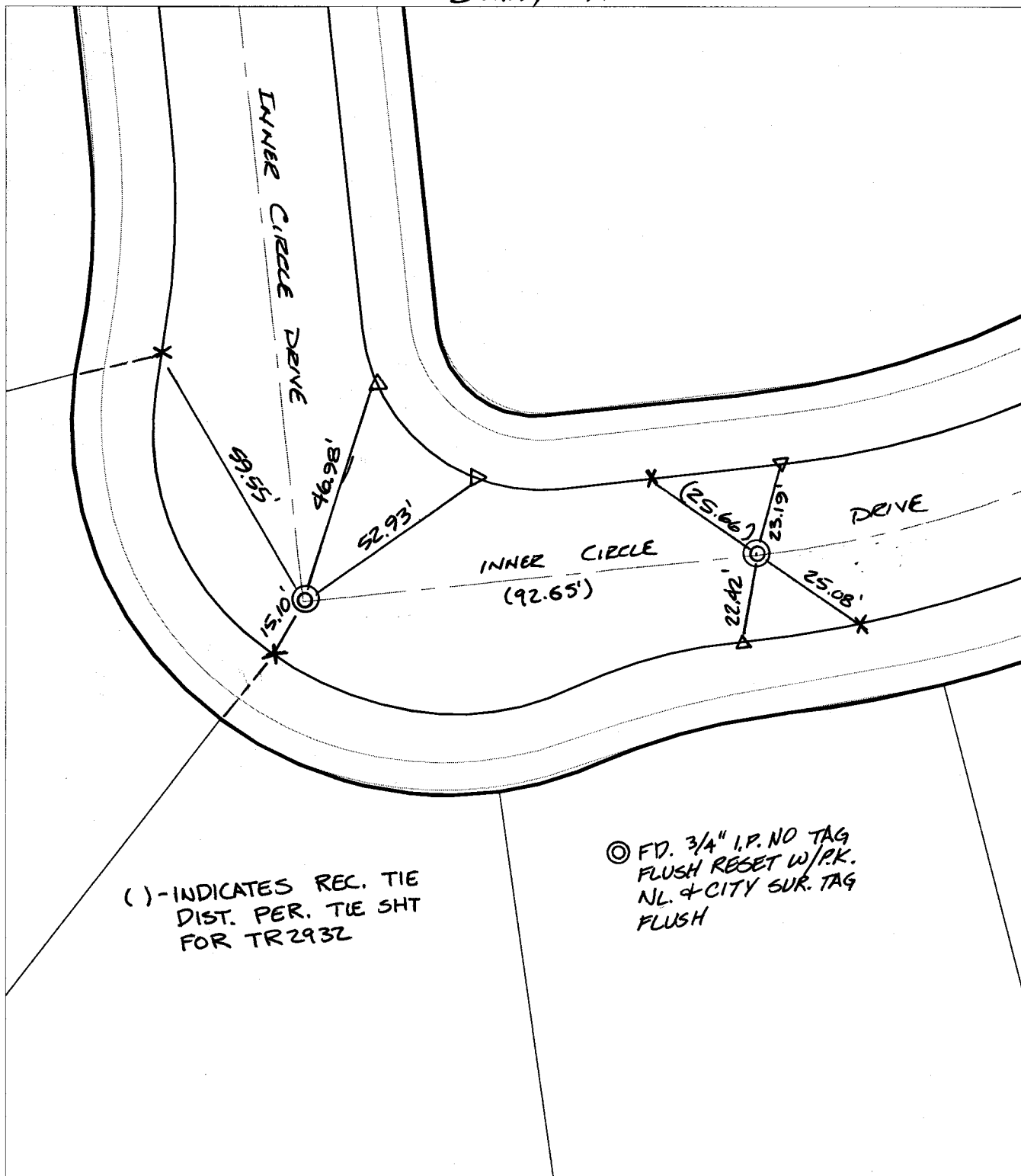
Street:

INNER CIRCLE DRIVE

X-Street:  
OFFICIAL USE ONLY

KNUCKLE

SWING TIES



( ) - INDICATES REC. TIE DIST. PER. TIE SHOT FOR TR2932

◎ FD. 3/4" I.P. NO TAG FLUSH RESET W/P.K. NL. & CITY SUR. TAG FLUSH

- ✕ FD. Ramset Nail on T/C
- FD. "C" Nail on T/C

- FD. LD. & TK. on T/C
- Set LD. & TK. on T/C

P.K. and City Engineer tag to be set @ surface after street construction is complete. (If possible)

Scale: 1" = 30'  
 Date: 01/30/03  
 Drawn by: SURVEY  
 F.B.:  
 TR-Sec: T2SR4W-31

## OFFICIAL TIE PLAT

### CITY OF RIVERSIDE

*These ties are for the purpose of perpetuating the found monumentation. No claim is made as to the relationship of the points or lines shown hereon to true boundary locations.*



Sheet 1 of 1  
 Cadme MB: 56-3