

C 11923.TIF

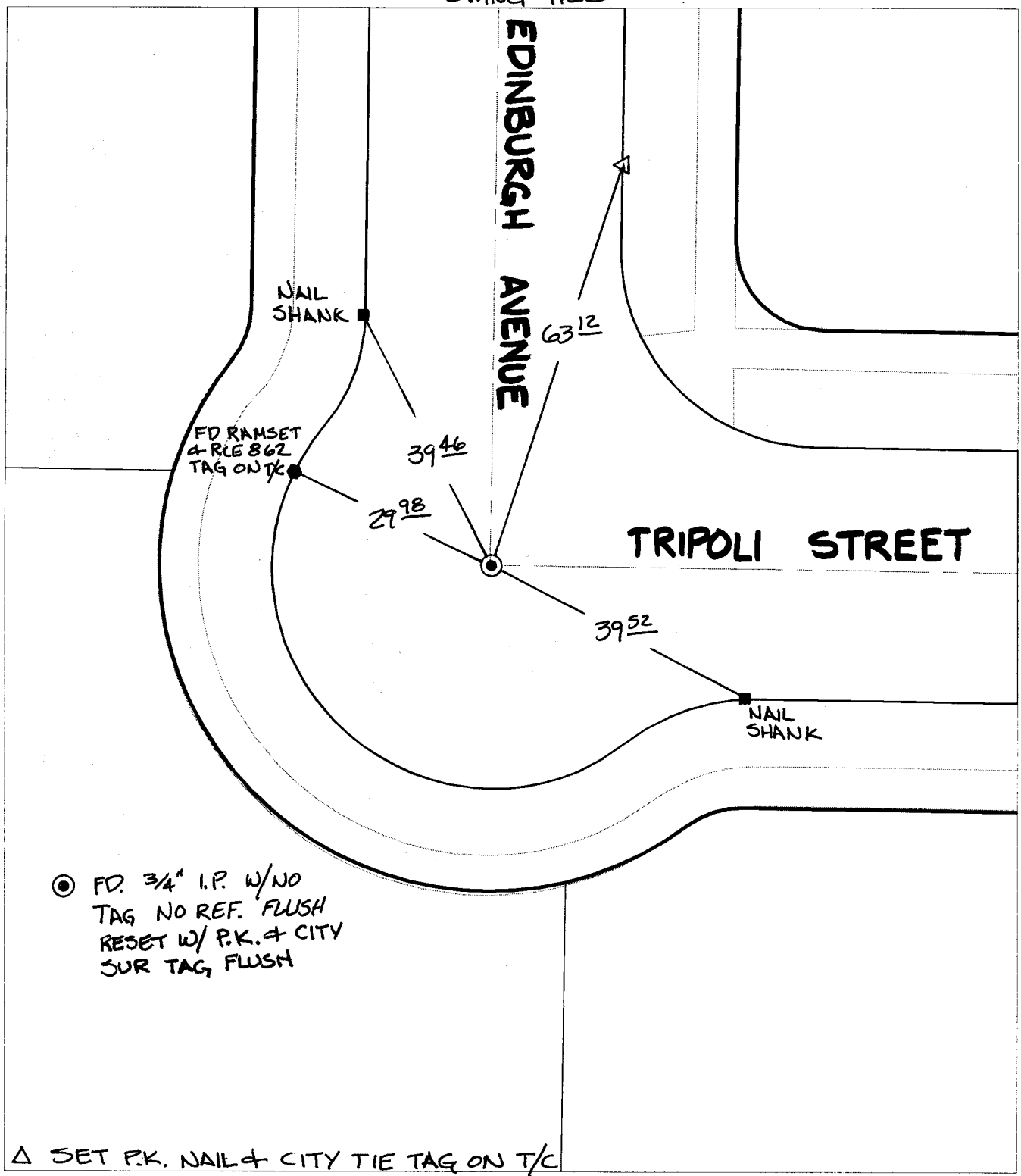
Street:

TRIPOLI STREET

X-Street:  
OFFICIAL USE ONLY

EDINBURGH AVENUE

SWING TIES



⊙ FD. 3/4" I.P. W/NO TAG NO REF. FLUSH RESET W/ P.K. & CITY SUR TAG, FLUSH

△ SET P.K. NAIL & CITY TIE TAG ON T/C

- ⊗ FD. Ramset Nail on T/C
- FD. LD. & TK. on T/C
- FD. "C" Nail on T/C
- Set LD. & TK. on T/C
- P.K. and City Engineer tag to be set @ surface after street construction is complete. (If possible)

Scale: 1" = 20'  
 Date: 01/30/03  
 Drawn by: SURVEY  
 F.B.:  
 TR-Sec: T2SR4W-19

**OFFICIAL TIE PLAT**  
**CITY OF RIVERSIDE**

*These ties are for the purpose of perpetuating the found monumentation. No claim is made as to the relationship of the points or lines shown hereon to true boundary locations.*

Sheet 1 of 1  
 Cadme MB: 26-8