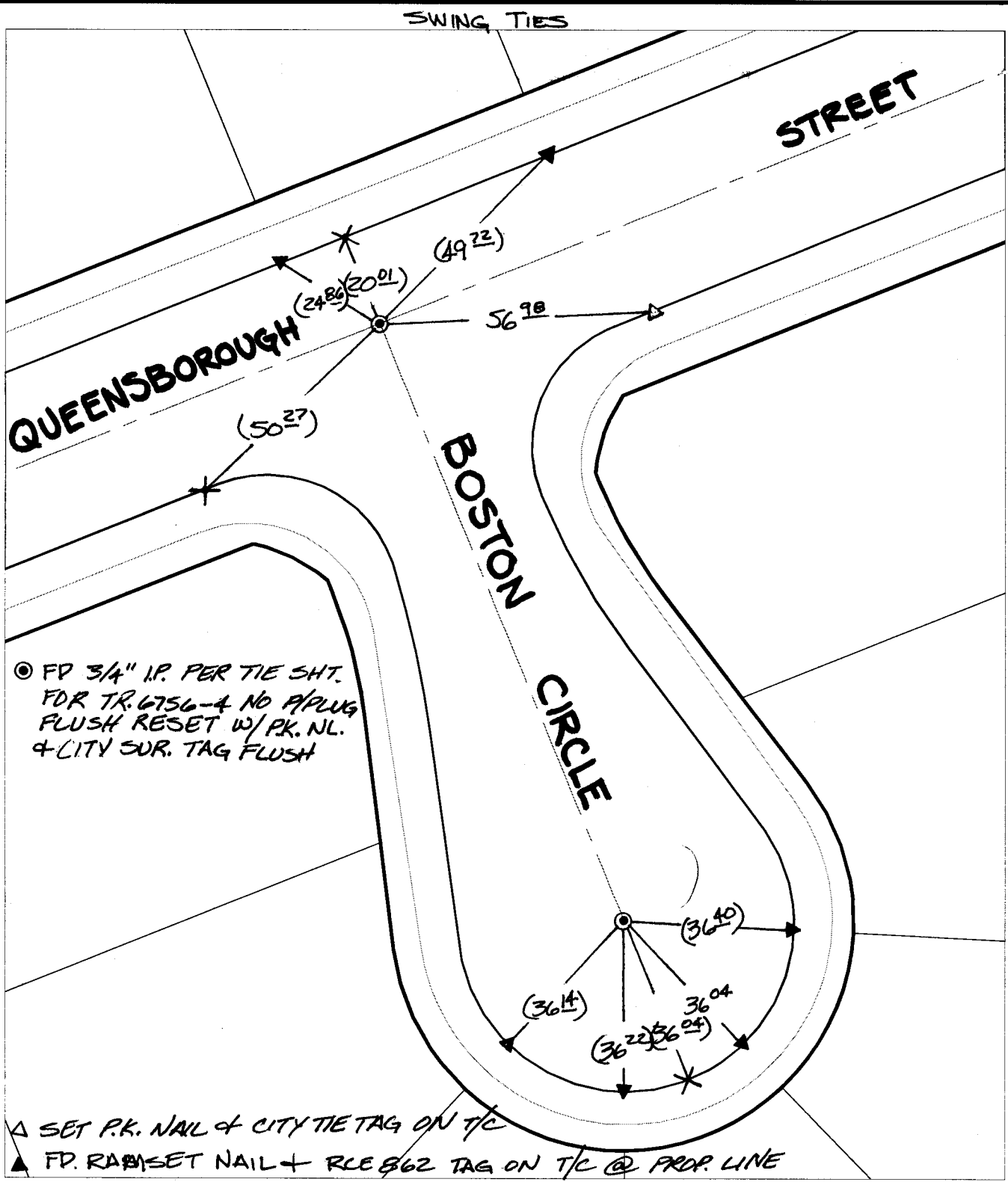


C 11934.TIF

Street:

BOSTON CIRCLE

X-Street QUEENSBOROUGH STREET
OFFICIAL USE ONLY



⊙ FD 3/4" I.P. PER TIE SHT.
 FDR TR. 6756-4 NO P/PLUG
 FLUSH RESET W/PK. NL.
 & CITY SUR. TAG FLUSH


△ SET P.K. NAIL & CITY TIE TAG ON T/C
 ▲ FD. RAMSET NAIL + RCE 862 TAG ON T/C @ PROP. LINE

✕ FD. Ramset Nail on T/C ● FD. LD. & TK. on T/C P.K. and City Engineer tag to be set @
 ■ FD. "C" Nail on T/C ○ Set LD. & TK. on T/C surface after street construction is
 complete. (If possible)

Scale: 1" = 30'
 Date: 09/30/02
 Drawn by: SURVEY
 F.B.:
 TR-Sec: T3SR6W-23

OFFICIAL TIE PLAT
CITY OF RIVERSIDE

*These ties are for the purpose of perpetuating the found
 monumentation. No claim is made as to the relationship of
 the points or lines shown hereon to true boundary locations.*


 Sheet 1 of 1
 Cadme MB: 79-7