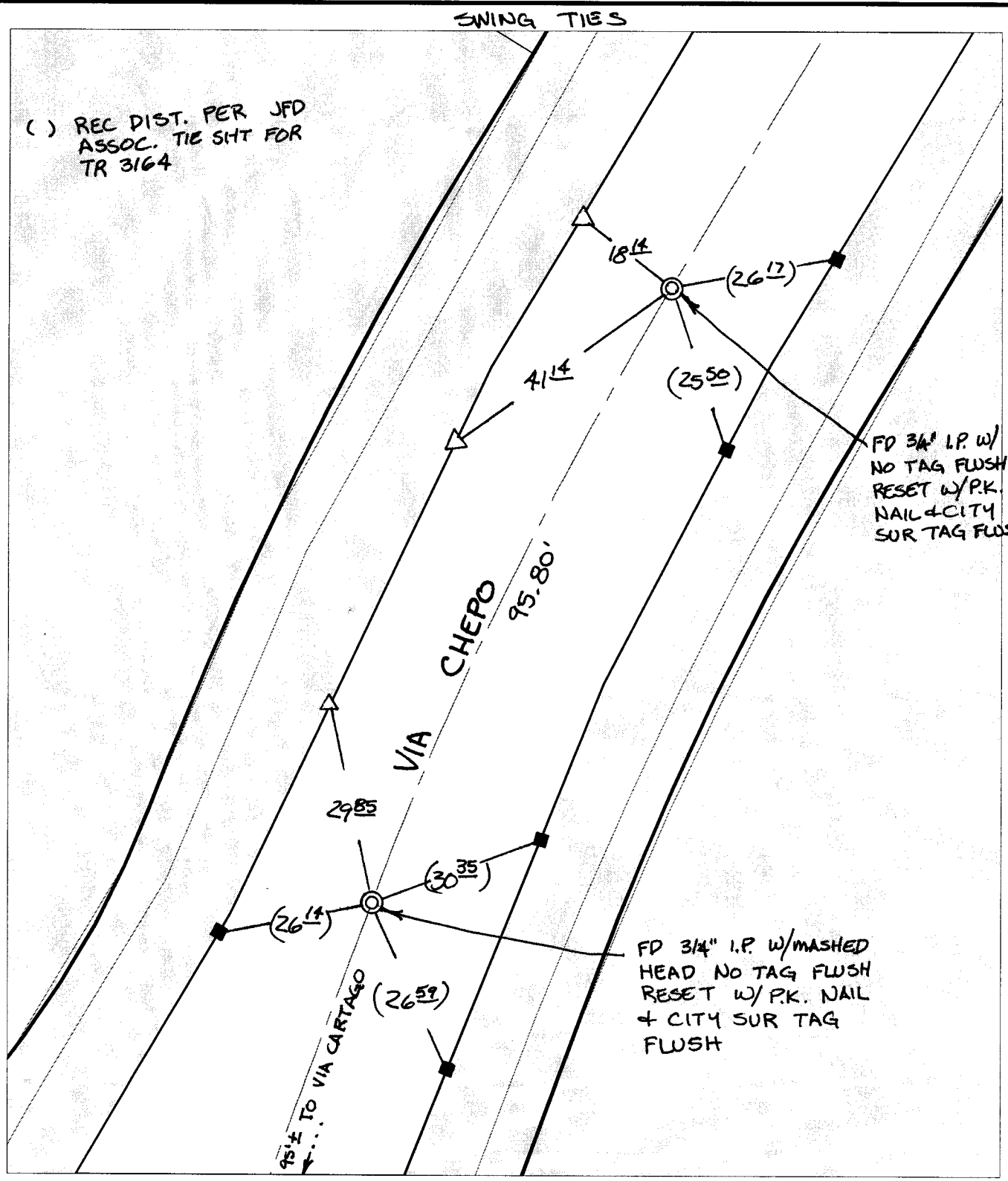


Street: VIA CHEPO
X-Street: VIA CARTAGO
VIA CHEPO
VIA CARTAGO
OFFICIAL USE ONLY



() REC DIST. PER JFD ASSOC. TIE SHIT FOR TR 3164

FD 3/4" I.P. w/ NO TAG FLUSH RESET w/P.K. NAIL & CITY SUR TAG FLUSH

FD 3/4" I.P. w/MASHED HEAD NO TAG FLUSH RESET w/P.K. NAIL + CITY SUR TAG FLUSH

- ✕ FD. Ramset Nail on T/C
 - FD. LD. & TK. on T/C
 - Set LD. & TK. on T/C
 - FD. "C" Nail on T/C
- P.K. and City Engineer tag to be set @ surface after street construction is complete. (If possible)

Scale: 1" = 20'
 Date: 12/30/03
 Drawn by: SURVEY
 F.B.:
 TR-Sec: T2SR4W-31

OFFICIAL TIE PLAT
CITY OF RIVERSIDE

These ties are for the purpose of perpetuating the found monumentation. No claim is made as to the relationship of the points or lines shown hereon to true boundary locations.

Sheet 1 of 1
 Cadme MB: 56-4