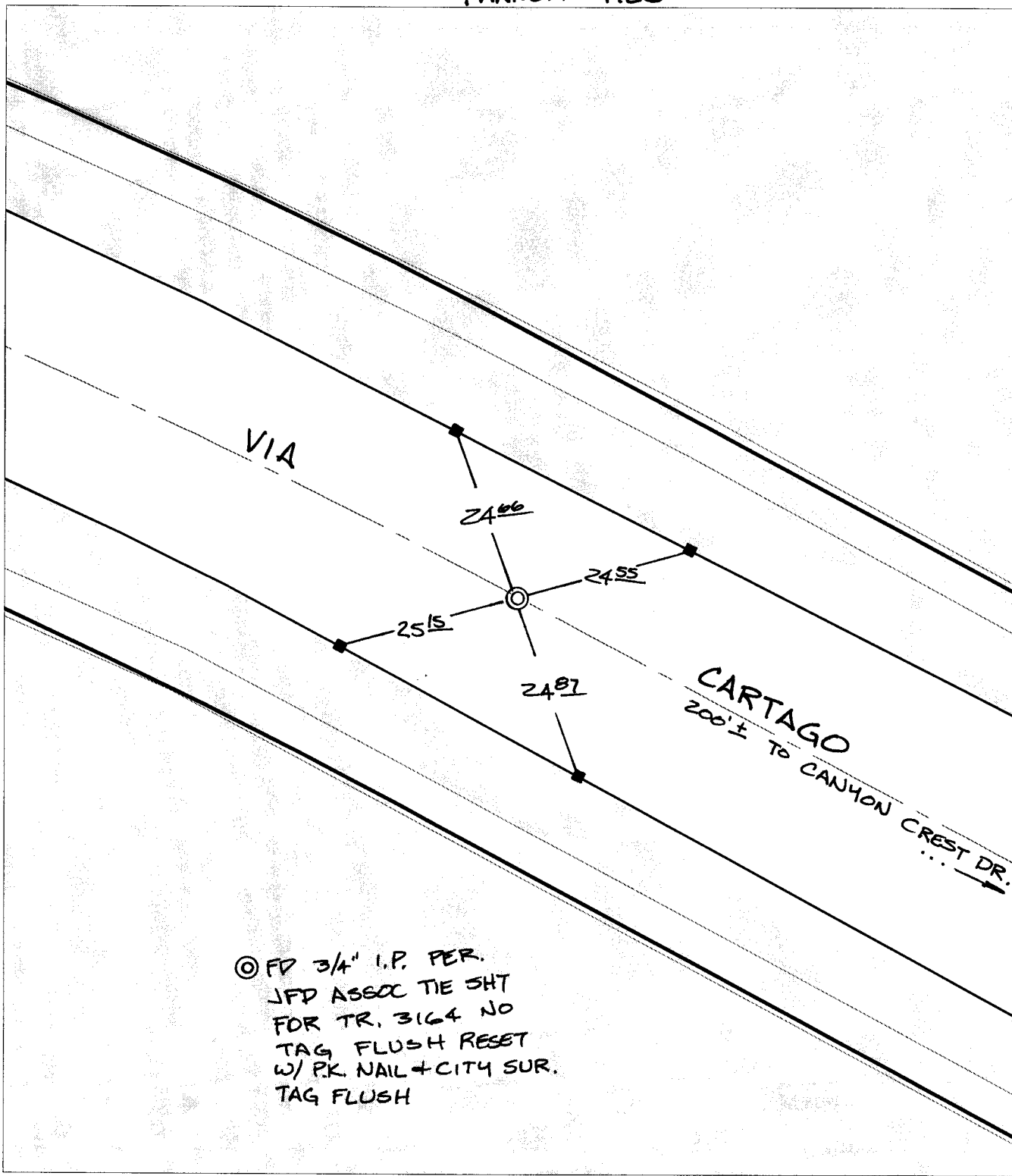


Street:

VIA CARTAGO

X-Street: EC W OF CANYON CREST
OFFICIAL USE ONLY

TRANSIT TIES



⊙ FD 3/4" I.P. PER.
 JFD ASSOC TIE SHT
 FOR TR. 3164 NO
 TAG FLUSH RESET
 W/ P.K. NAIL + CITY SUR.
 TAG FLUSH

- ✕ FD. Ramset Nail on T/C
- FD. "C" Nail on T/C

- FD. LD. & TK. on T/C
- Set LD. & TK. on T/C

P.K. and City Engineer tag to be set @
 surface after street construction is
 complete. (If possible)

Scale: 1" = 20'
 Date: 12/30/03
 Drawn by: SURVEY
 F.B.:
 TR-Sec: T2SR4W-32

OFFICIAL TIE PLAT
CITY OF RIVERSIDE

*These ties are for the purpose of perpetuating the found
 monumentation. No claim is made as to the relationship of
 the points or lines shown hereon to true boundary locations.*



Sheet 1 of 1
 Cadme MB: 56-4