

Street:

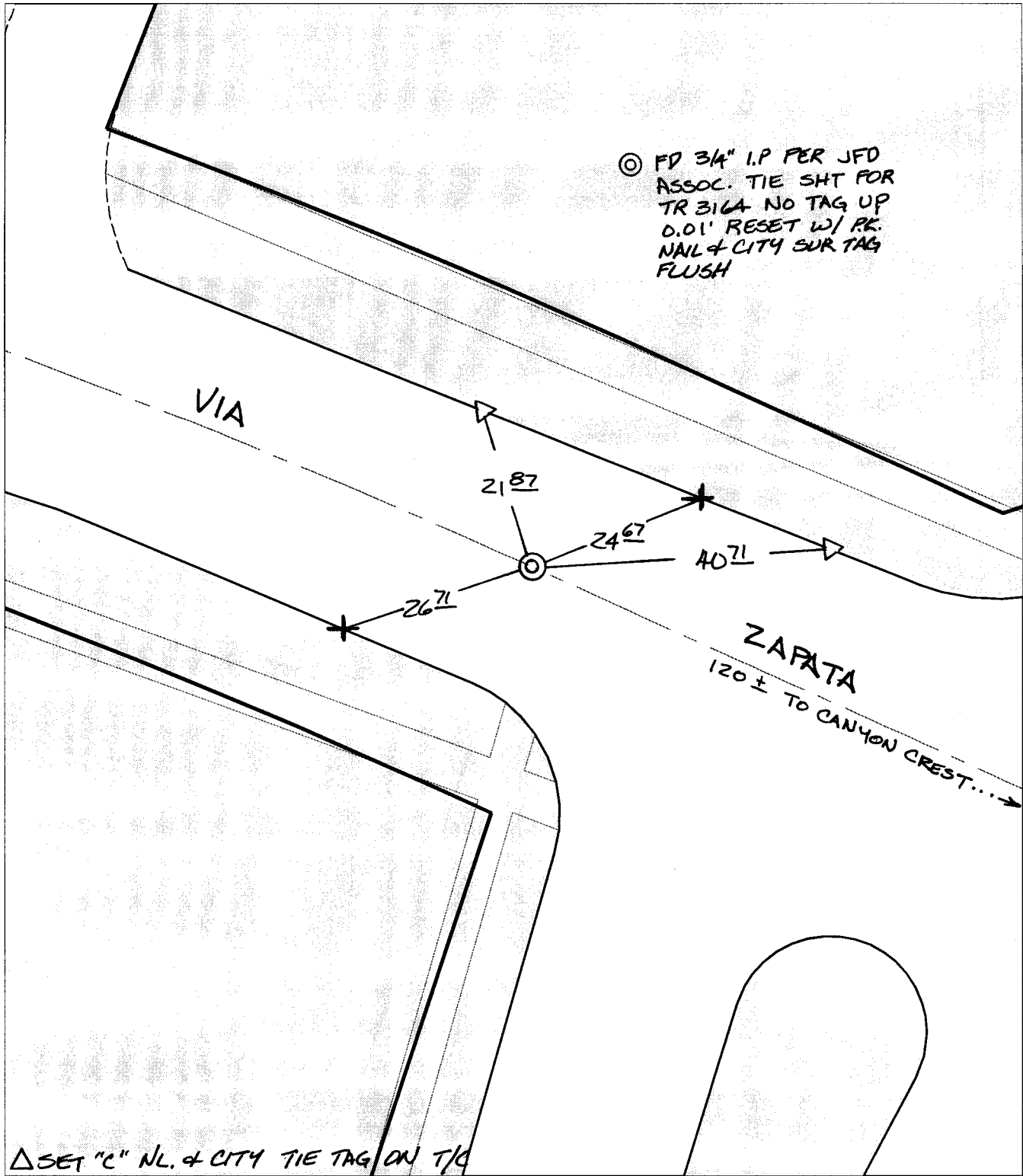
VIA ZAPATA

OFFICIAL USE ONLY

X-Street: EC W OF CANYON CREST

SWING TIES

⊙ FD 3/4" I.P PER JFD ASSOC. TIE SHT FOR TR 316A NO TAG UP 0.01' RESET W/ P.K. NAIL & CITY SUR TAG FLUSH



- × FD. Ramset Nail on T/C    ● FD. LD. & TK. on T/C
- FD. "C" Nail on T/C      ○ Set LD. & TK. on T/C

P.K. and City Engineer tag to be set on surface after street construction is complete. (If possible)

Scale: 1" = 20'  
 Date: 12/30/03  
 Drawn by: SURVEY  
 F.B.:  
 TR-Sec: T2SR4W-32

## OFFICIAL TIE PLAT

### CITY OF RIVERSIDE

*These ties are for the purpose of perpetuating the found monumentation. No claim is made as to the relationship of the points or lines shown hereon to true boundary locations.*



Sheet 1 of 1  
 Cadme MB: 57-3