

Street:

HIGH STREET

OFFICIAL USE ONLY

X-Street:

CARLTON PLACE

SWING TIES

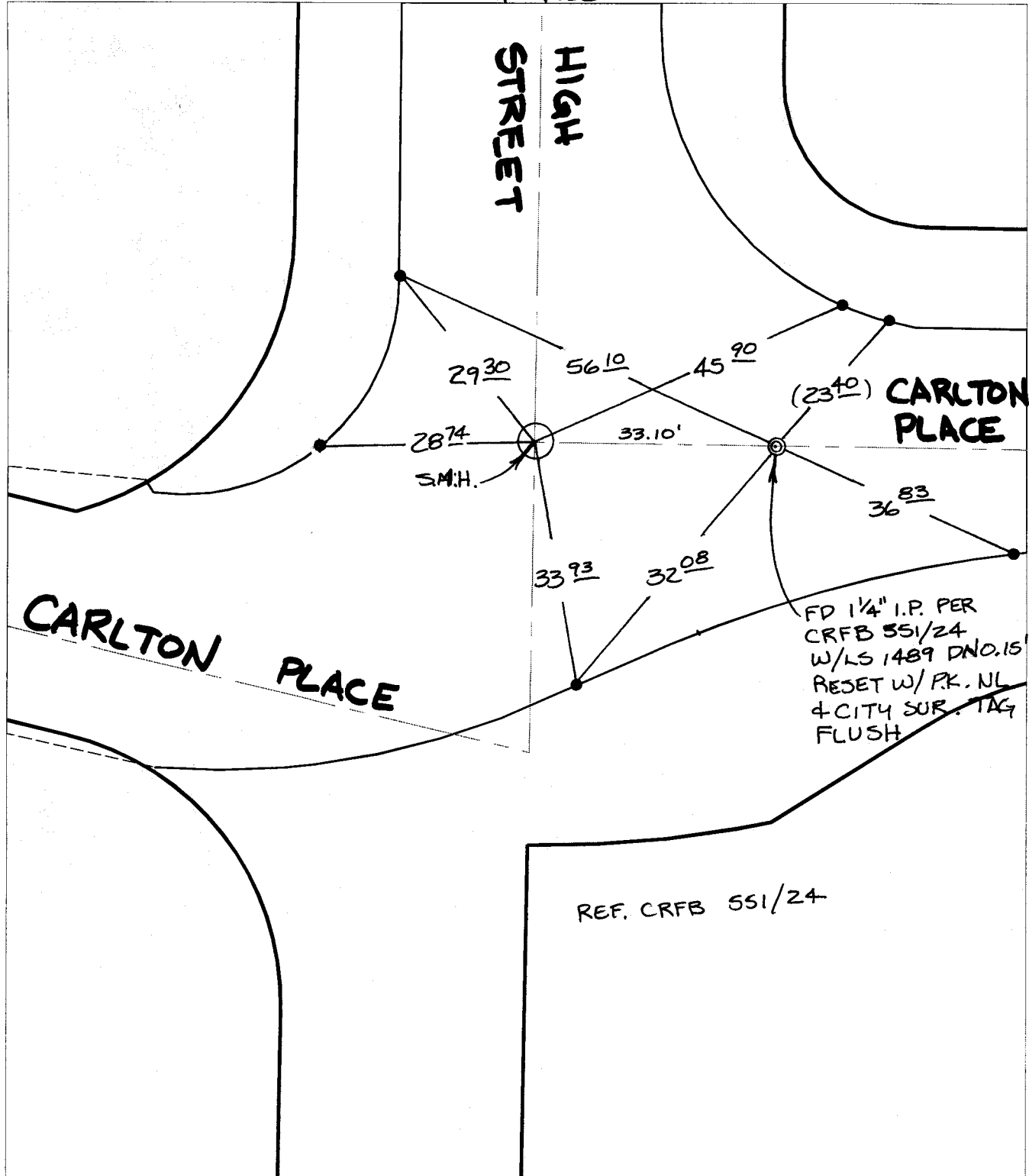
HIGH STREET

CARLTON PLACE

CARLTON PLACE

REF. CRFB 551/24

FD 1/4" I.P. PER
CRFB 551/24
W/LS 1489 DNO.15
RESET W/PK. NL
& CITY SUR. TAG
FLUSH



- ✕ FD. Ramset Nail on T/C ● FD. LD. & TK. on T/C P.K. and City Engineer tag to be set @ surface after street construction is complete. (If possible)
- FD. "C" Nail on T/C ○ Set LD. & TK. on T/C

Scale: 1" = 20'
 Date: 02/23/04
 Drawn by: SURVEY
 F.B.:
 TR-Sec: T2SR5W-26

OFFICIAL TIE PLAT
 CITY OF RIVERSIDE

These ties are for the purpose of perpetuating the found monumentation. No claim is made as to the relationship of the points or lines shown hereon to true boundary locations.

Sheet 1 of 1
 Cadme MB: 40-5