

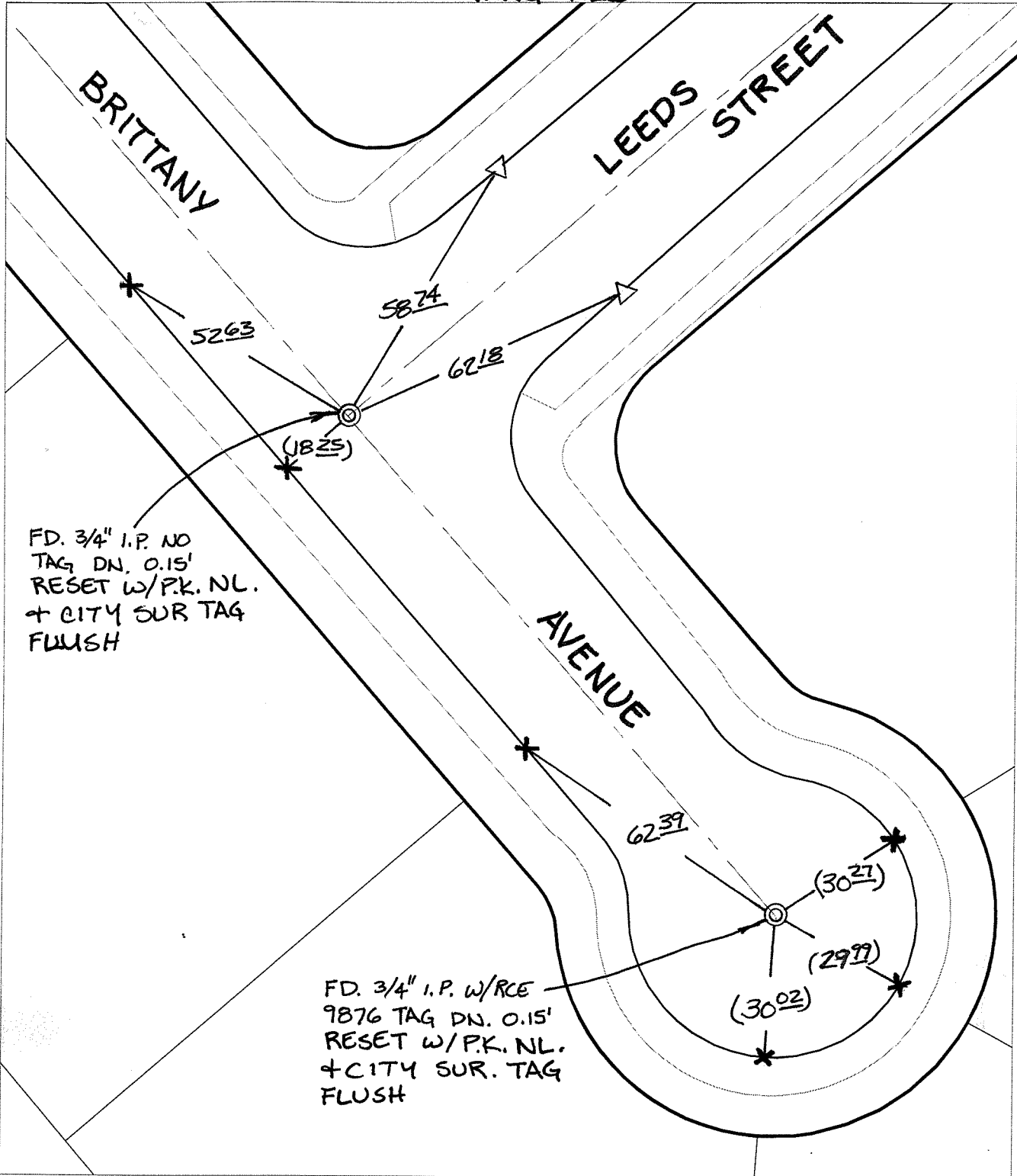
Street:

BRITTANY AVENUE

X-Street:
OFFICIAL USE ONLY

LEEDS STREET

SWING TIES



FD. 3/4" I.P. NO TAG DN. 0.15' RESET W/P.K. NL. + CITY SUR TAG FLUSH

FD. 3/4" I.P. W/RCE 9876 TAG DN. 0.15' RESET W/P.K. NL. + CITY SUR. TAG FLUSH

- ✕ FD. Ramset Nail on T/C ● FD. LD. & TK. on T/C
- FD. "C" Nail on T/C ○ Set LD. & TK. on T/C

P.K. and City Engineer tag to be set @ surface after street construction is complete. (If possible)

Scale: 1" = 30'
 Date: 02/14/06
 Drawn by: scurtis
 F.B.:
 TR-Sec: T2SR5W-36

OFFICIAL TIE PLAT

CITY OF RIVERSIDE

These ties are for the purpose of perpetuating the found monumentation. No claim is made as to the relationship of the points or lines shown hereon to true boundary locations.



Sheet 1 of 1
 Cadme MB: 55-4