

C12194.71P

Street:

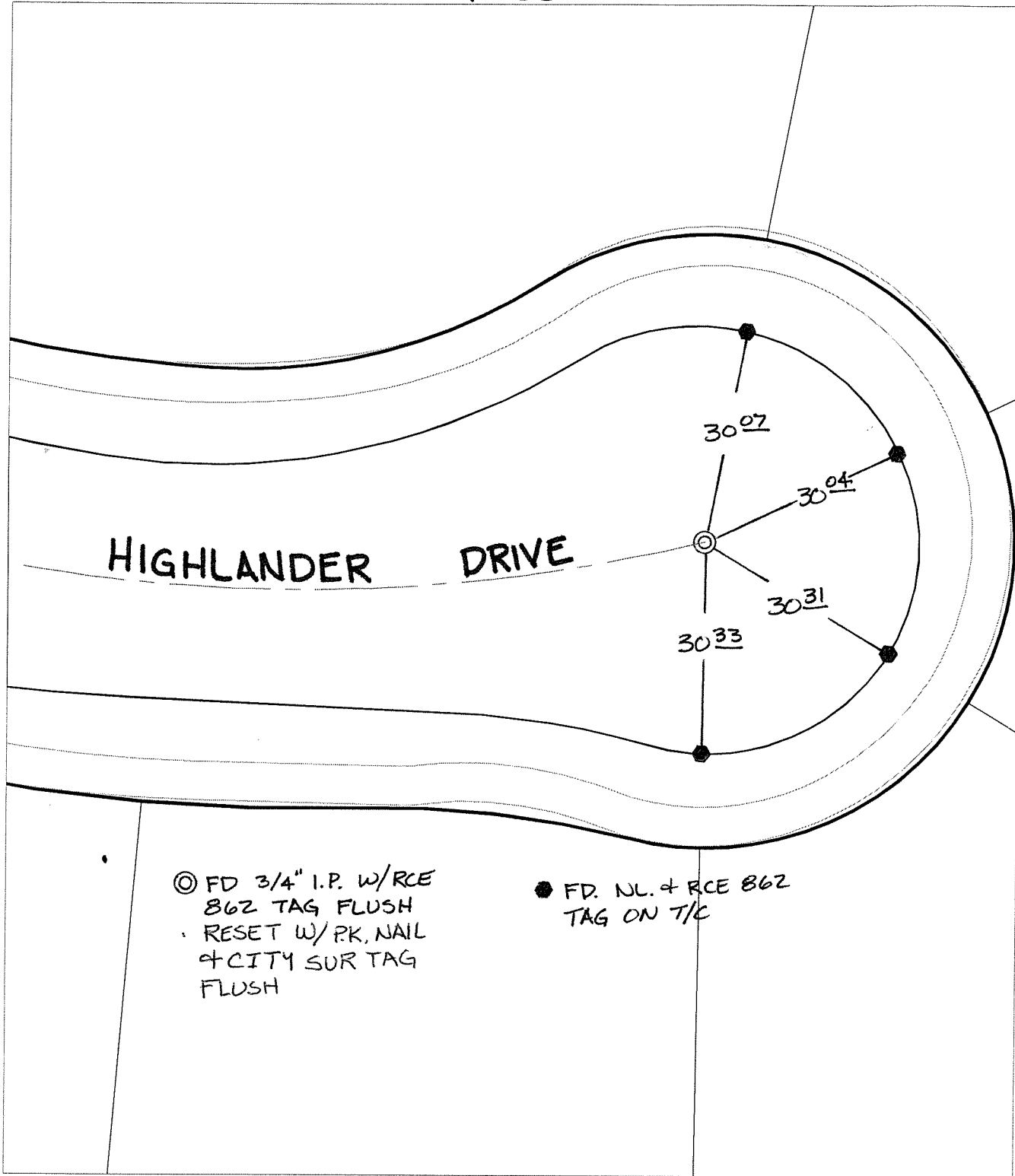
HIGHLANDER DRIVE

X-Street:

CUL-DE-SAC

OFFICIAL USE ONLY

SWING TIES



◎ FD 3/4" I.P. w/RCE  
 862 TAG FLUSH  
 RESET W/PK, NAIL  
 + CITY SUR TAG  
 FLUSH

● FD. NL. & RCE 862  
 TAG ON T/C

- ✕ FD. Ramset Nail on T/C
- FD. LD. & TK. on T/C
- FD. "C" Nail on T/C
- Set LD. & TK. on T/C

P.K. and City Engineer tag to be set @  
 surface after street construction is  
 complete. (If possible)

Scale: 1" = 20'  
 Date: 01/20/06  
 Drawn by: scurtis  
 F.B.:  
 TR-Sec: T2SR4W-20

**OFFICIAL TIE PLAT**  
 CITY OF RIVERSIDE

*These ties are for the purpose of perpetuating the found  
 monumentation. No claim is made as to the relationship of  
 the points or lines shown hereon to true boundary locations.*

Sheet 1 of 1  
 Cadme MB: 27-8