

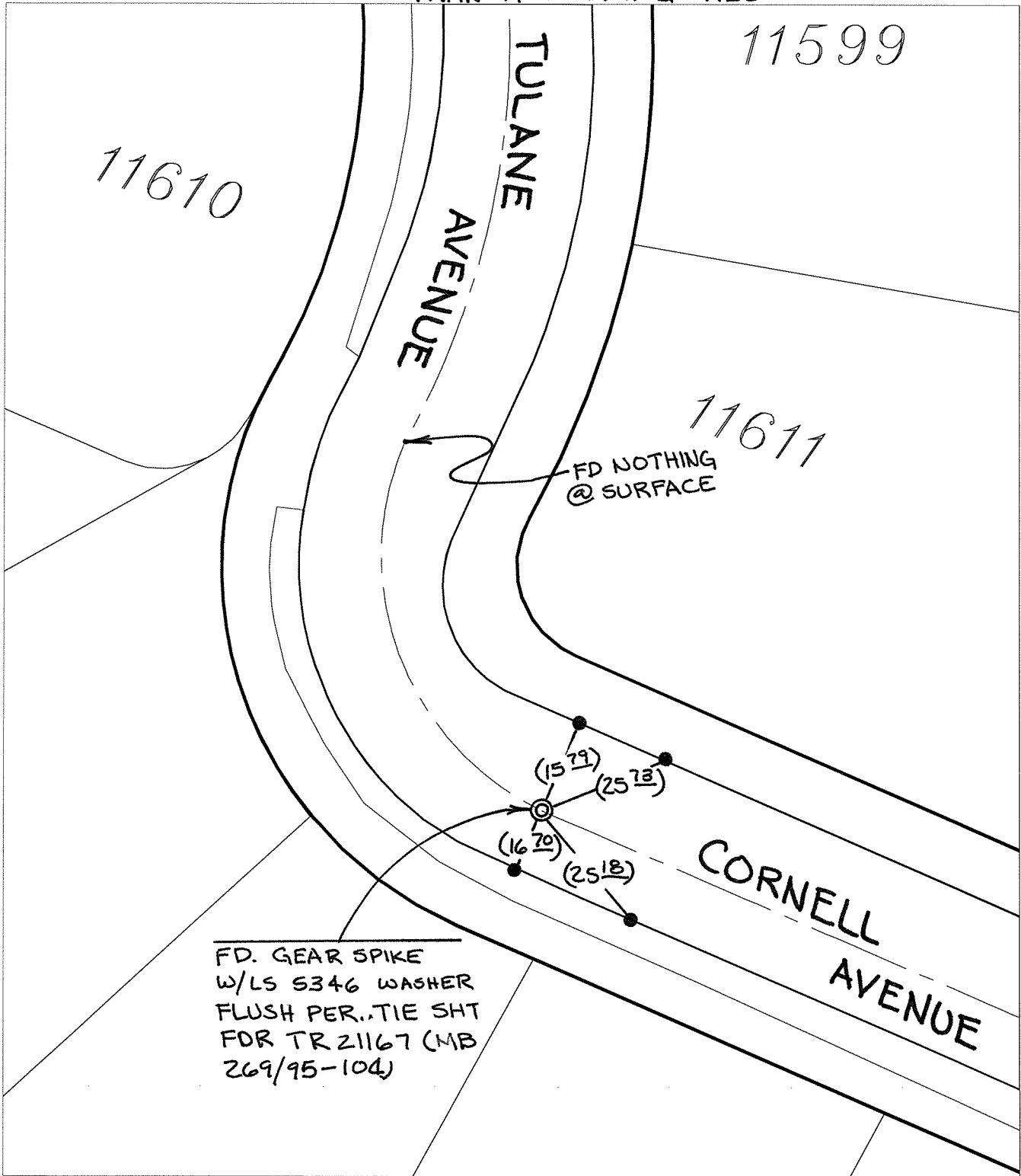
Street:

TULANE AVENUE B.C.

X-Street: CORNELL AVENUE E.C.

OFFICIAL USE ONLY

TRANSIT & SWING TIES



FD. GEAR SPIKE
 W/LS 5346 WASHER
 FLUSH PER. TIE SHT
 FOR TR 21167 (MB
 269/95-104)

- ✕ FD. Ramset Nail on T/C ● FD. LD. & TK. on T/C
- FD. "C" Nail on T/C ○ Set LD. & TK. on T/C

P.K. and City Engineer tag to be set @
 surface after street construction is
 complete. (If possible)

Scale: 1" = 30'

Date: 08/27/07

Drawn by: pw

F.B.:

TR-Sec: T2SR4W-33

OFFICIAL TIE PLAT

CITY OF RIVERSIDE

*These ties are for the purpose of perpetuating the found
 monumentation. No claim is made as to the relationship of
 the points or lines shown hereon to true boundary locations.*



Sheet 1 of 1

Cadme MB: 58-3