

C/2277.71F

Street:

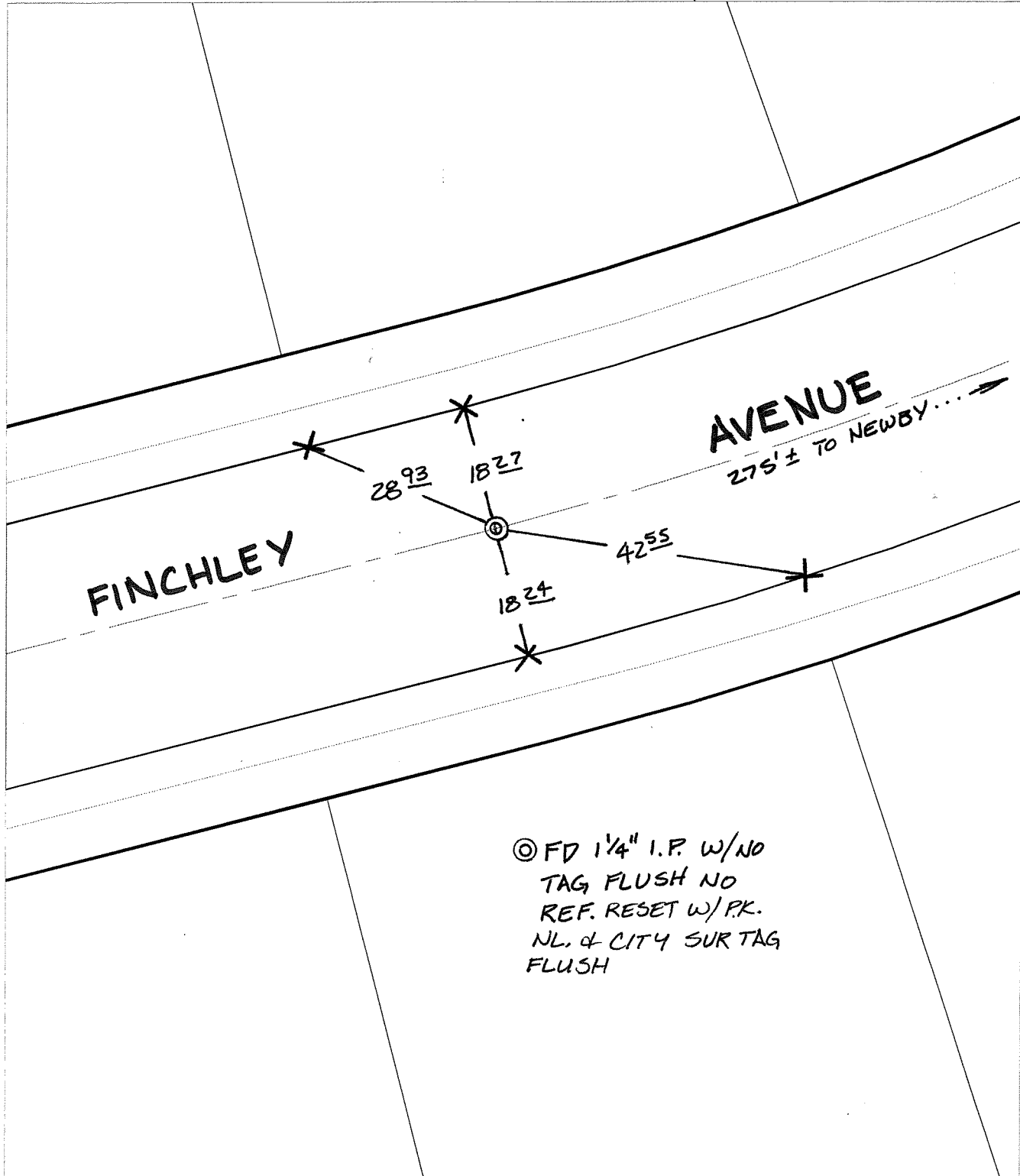
FINCHLEY AVENUE

OFFICIAL USE ONLY

X-Street:

B.C. W. OF NEWBY

TRANSIT & SWING TIES



© FD 1 1/4" I.P. W/NO
 TAG FLUSH NO
 REF. RESET W/PK.
 NL. & CITY SUR TAG
 FLUSH

- ✕ FD. Ramset Nail on T/C
- FD. "C" Nail on T/C

- FD. LD. & TK. on T/C
- Set LD. & TK. on T/C

P.K. and City Engineer tag to be set @
 surface after street construction is
 complete. (If possible)

Scale: 1" = 20'

Date: 08/04/05

Drawn by: SURVEY

F.B.:

TR-Sec: T3SR6W-14

OFFICIAL TIE PLAT

CITY OF RIVERSIDE

*These ties are for the purpose of perpetuating the found
 monumentation. No claim is made as to the relationship of
 the points or lines shown hereon to true boundary locations.*



Sheet 1 of 1

Cadme MB: 64-7