

C12278.TIF

Street:

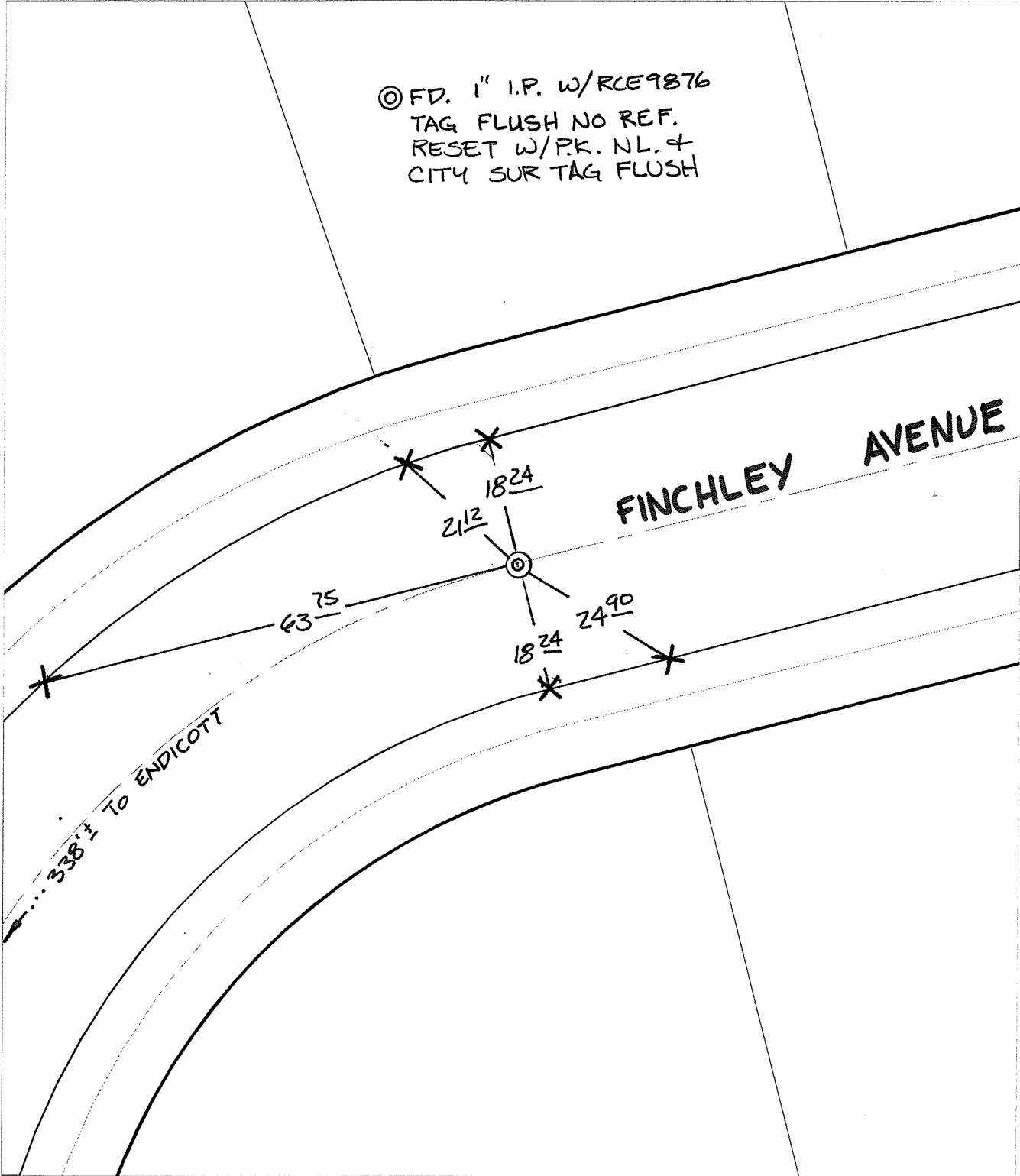
FINCHLEY AVENUE

OFFICIAL USE ONLY

X-Street: E.C. N. OF ENDICOTT

TRANSIT & SWING TIES

⊙ FD. 1" I.P. W/RCE9876
TAG FLUSH NO REF.
RESET W/P.K. NL. &
CITY SUR TAG FLUSH



- ✕ FD. Ramset Nail on T/C
- FD. "C" Nail on T/C

- FD. LD. & TK. on T/C
- Set LD. & TK. on T/C

P.K. and City Engineer tag to be set @ surface after street construction is complete. (If possible)

Scale: 1" = 20'
 Date: 08/04/05
 Drawn by: SURVEY
 F.B.:
 TR-Sec: T3SR6W-14

OFFICIAL TIE PLAT
 CITY OF RIVERSIDE

These ties are for the purpose of perpetuating the found monumentation. No claim is made as to the relationship of the points or lines shown hereon to true boundary locations.



Sheet 1 of 1
 Cadme MB: 64-7