

C12300, T1E

Street:

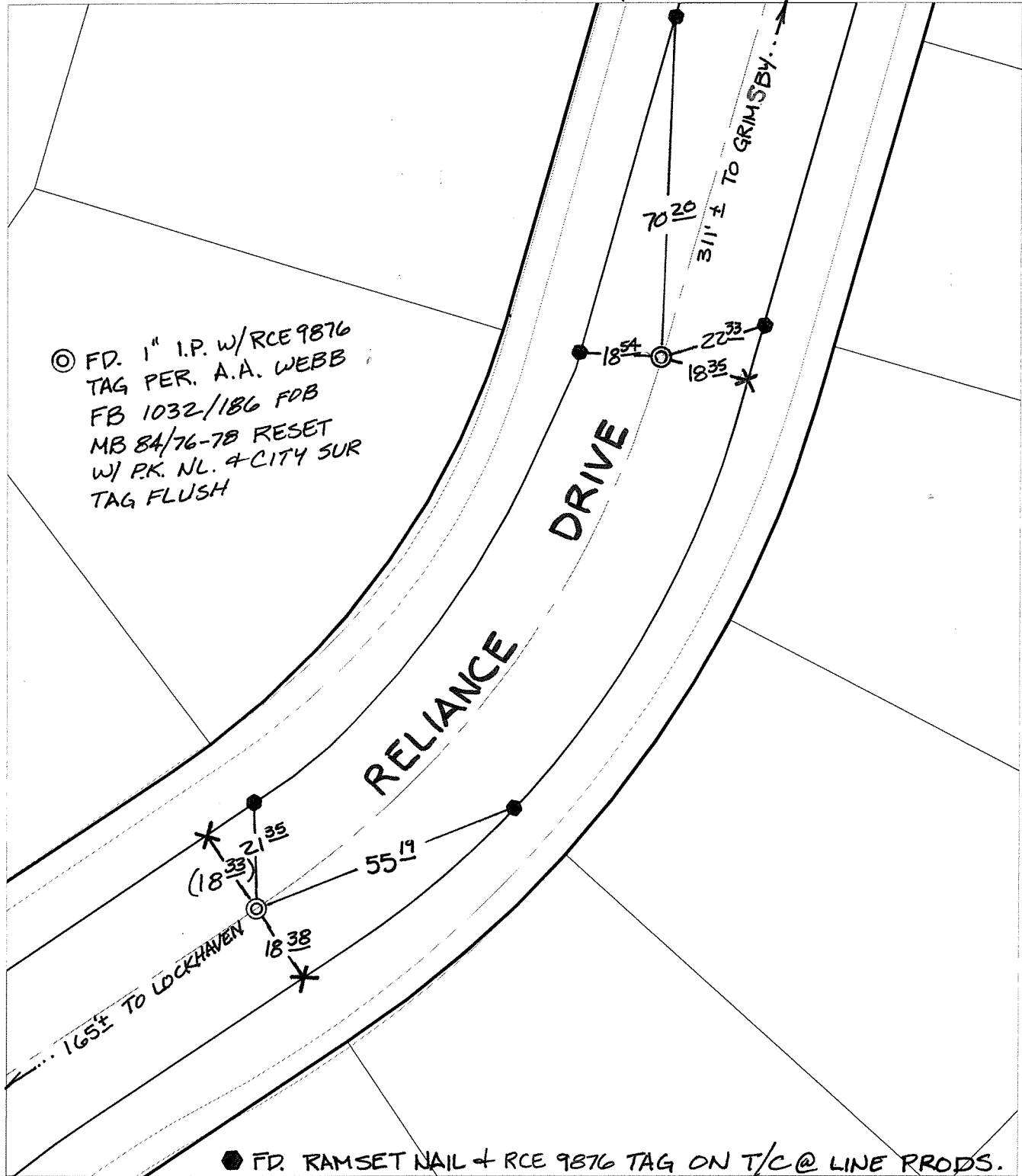
RELIANCE DRIVE

X-Street:

S. OF GRIMSBY

OFFICIAL USE ONLY

TRANSIT + SWING TIES



© FD. 1" I.P. w/RCE 9876
 TAG PER. A.A. WEBB
 FB 1032/186 FDB
 MB 84/76-78 RESET
 W/ P.K. NL. & CITY SUR
 TAG FLUSH

● FD. RAMSET NAIL + RCE 9876 TAG ON T/C @ LINE PRODS.

- ✕ FD. Ramset Nail on T/C
 - FD. LD. & TK. on T/C
 - FD. "C" Nail on T/C
 - Set LD. & TK. on T/C
- P.K. and City Engineer tag to be set @ surface after street construction is complete. (If possible)

Scale: 1" = 30'
 Date: 08/02/05
 Drawn by: SURVEY
 F.B.:
 TR-Sec: T3SR6W-14

OFFICIAL TIE PLAT
 CITY OF RIVERSIDE

These ties are for the purpose of perpetuating the found monumentation. No claim is made as to the relationship of the points or lines shown hereon to true boundary locations.

Sheet 1 of 1
 Cadme MB: 79-3