

Street:

DAVENPORT PLACE

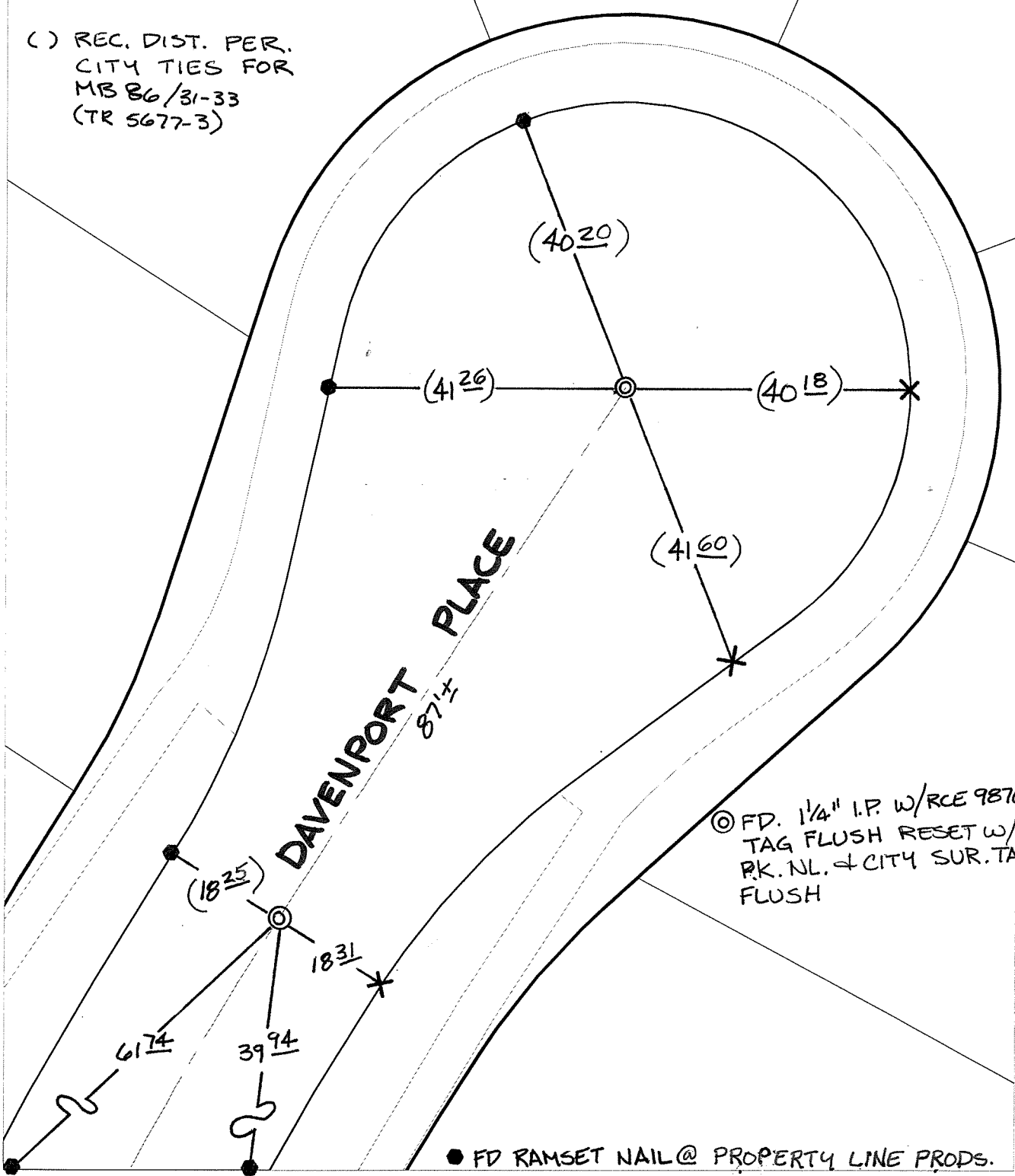
OFFICIAL USE ONLY

X-Street:

CUL-DE-SAC

TRANSIT & SWING TIES

() REC. DIST. PER. CITY TIES FOR MB 86/31-33 (TR 5677-3)



◎ FD. 1/4" I.P. W/RCE 9876 TAG FLUSH RESET W/ R.K. NL. & CITY SUR. TAG FLUSH

● FD RAMSET NAIL @ PROPERTY LINE PRODS.

- × FD. Ramset Nail on T/C
- FD. "C" Nail on T/C

- FD. LD. & TK. on T/C
- Set LD. & TK. on T/C

P.K. and City Engineer tag to be set @ surface after street construction is complete. (If possible)

Scale: 1" = 20'
 Date: 08/02/05
 Drawn by: SURVEY
 F.B.:
 TR-Sec: T3SR6W-14

OFFICIAL TIE PLAT
CITY OF RIVERSIDE

These ties are for the purpose of perpetuating the found monumentation. No claim is made as to the relationship of the points or lines shown hereon to true boundary locations.

Sheet 1 of 1
 Cadme MB: 79-1