

C12322.T1F

Street:

NOPAL PLACE

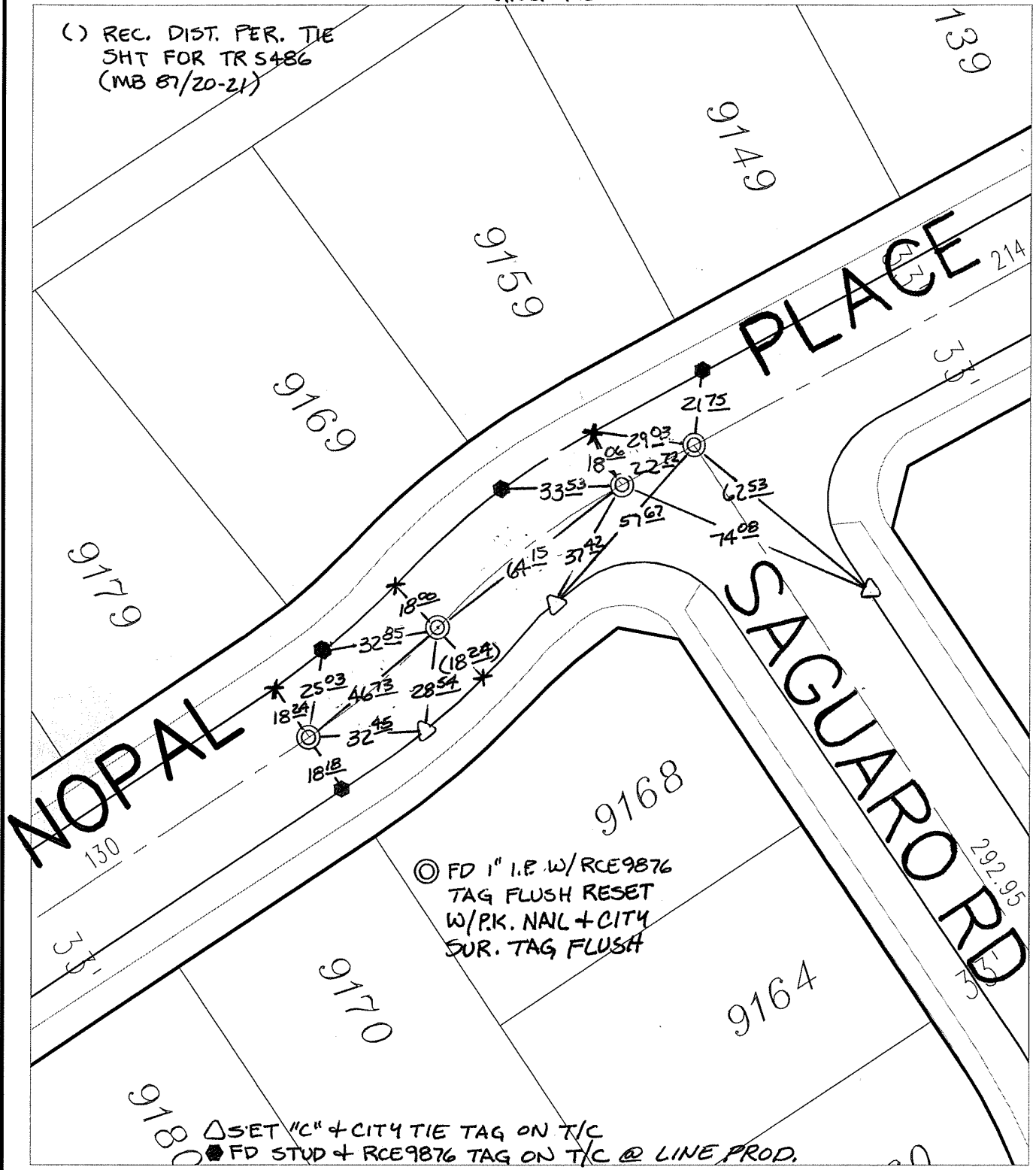
X-Street:

SAGUARO ROAD

OFFICIAL USE ONLY

SWING TIES

() REC. DIST. PER. TIE
SHT FOR TR S486
(MB 87/20-21)



⊙ FD 1" I.E. W/RCE9876
TAG FLUSH RESET
W/P.K. NAIL + CITY
SUR. TAG FLUSH

△ SET "C" + CITY TIE TAG ON T/C
● FD STUD + RCE9876 TAG ON T/C @ LINE PROD.

- ✕ FD. Ramset Nail on T/C ● FD. LD. & TK. on T/C P.K. and City Engineer tag to be set @ surface after street construction is complete. (If possible)
- FD. "C" Nail on T/C ○ Set LD. & TK. on T/C

Scale: 1" = 40'

Date: 04/06/09


Drawn by: pw

F.B.:

TR-Sec: T3SR5W-17

OFFICIAL TIE PLAT
CITY OF RIVERSIDE

These ties are for the purpose of perpetuating the found monumentation. No claim is made as to the relationship of the points or lines shown hereon to true boundary locations.



Sheet 1 of 1

Cadme MB: 66-8