

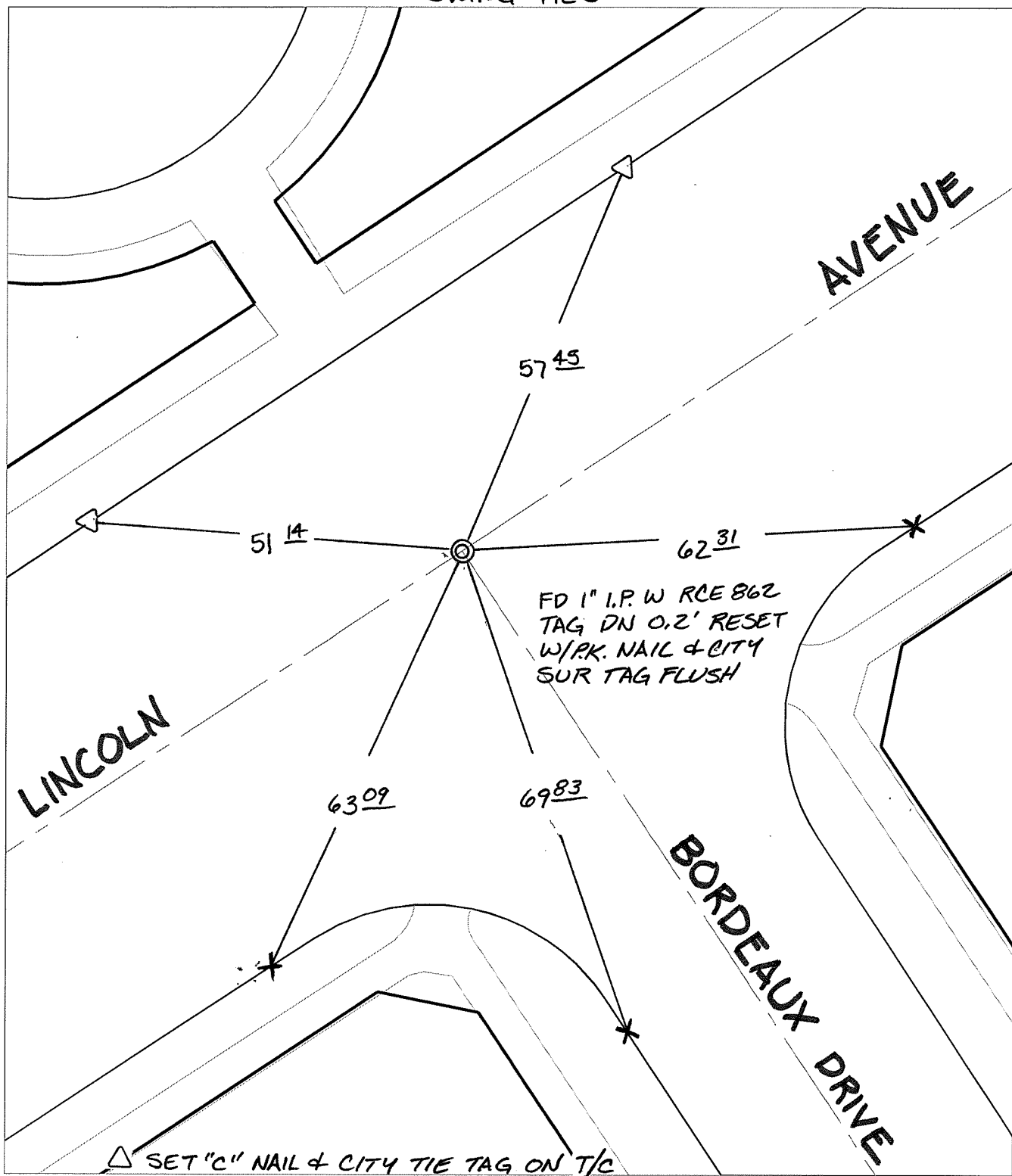
Street:

LINCOLN AVENUE

X-Street: OFFICIAL USE ONLY

BORDEAUX DRIVE

SWING TIES



FD 1" I.P. W RCE 862  
TAG DN 0.2' RESET  
W/PK. NAIL & CITY  
SUR TAG FLUSH

△ SET "C" NAIL & CITY TIE TAG ON T/C

- ✕ FD. Ramset Nail on T/C    ● FD. LD. & TK. on T/C
- FD. "C" Nail on T/C      ○ Set LD. & TK. on T/C

P.K. and City Engineer tag to be set @ surface after street construction is complete. (If possible)

Scale: 1" = 20'

Date: 01/21/11

Drawn by: pw

F.B.:

TR-Sec: T3SR5W-17

# OFFICIAL TIE PLAT

## CITY OF RIVERSIDE

*These ties are for the purpose of perpetuating the found monumentation. No claim is made as to the relationship of the points or lines shown hereon to true boundary locations.*



Sheet 1 of 1

Cadme MB: 81-2