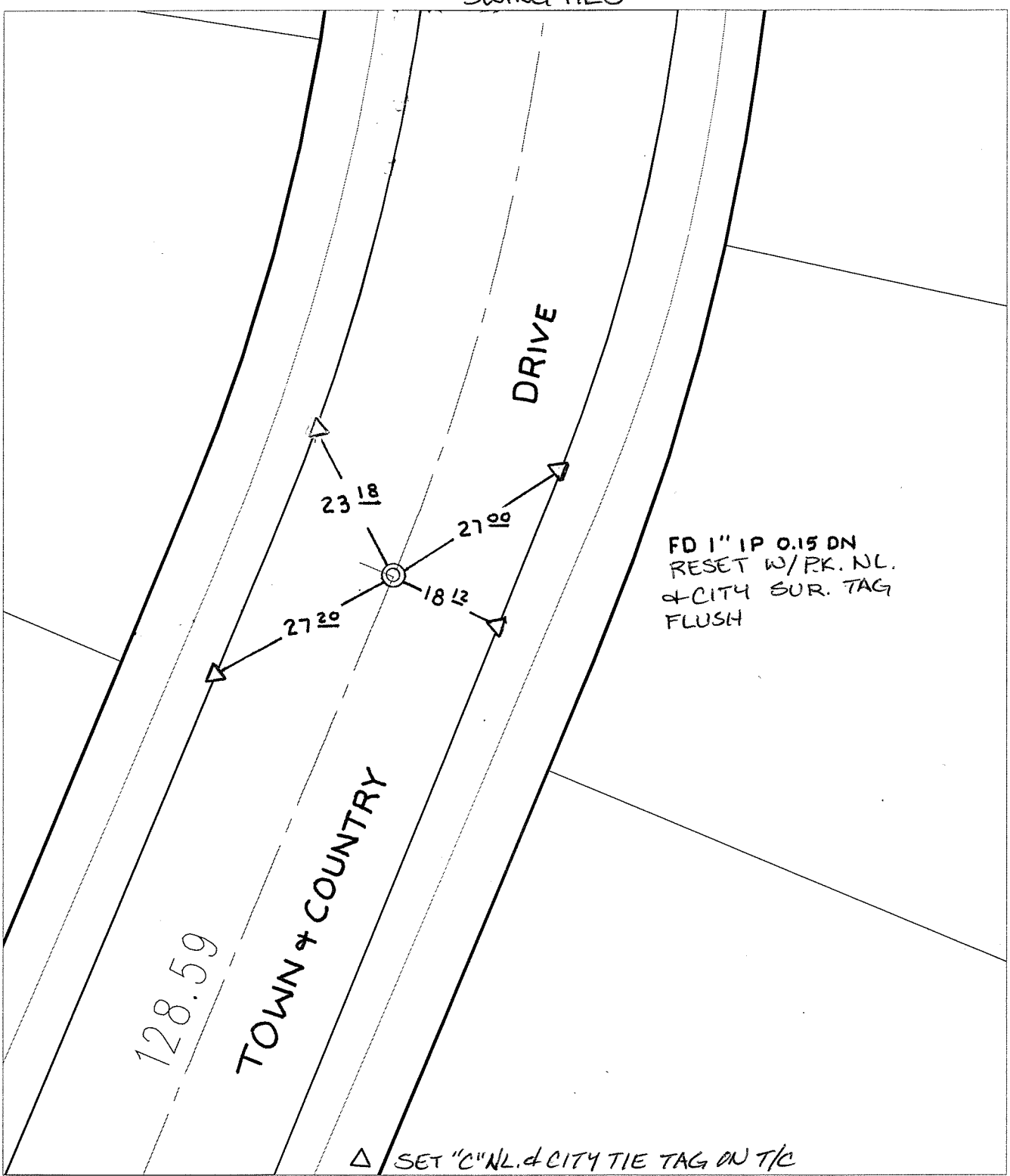


C12430.TIF

Street: TOWN & COUNTRY DRIVE X-Street: E.C.S. MONTLAKE INT.

OFFICIAL USE ONLY

SWING TIES



FD 1" IP 0.15 DN  
RESET W/PK. NL.  
& CITY SUR. TAG  
FLUSH

△ SET "C" NL. & CITY TIE TAG ON T/C

- × FD. Ramset Nail on T/C      ● FD. LD. & TK. on T/C      P.K. and City Engineer tag to be set @ surface after street construction is complete. (If possible)
- FD. "C" Nail on T/C      ○ Set LD. & TK. on T/C

Scale: 1" = 20'

Date: 09/14/06


Drawn by: survey

F.B.:

TR-Sec: T3SR6W-23

**OFFICIAL TIE PLAT**  
CITY OF RIVERSIDE

*These ties are for the purpose of perpetuating the found monumentation. No claim is made as to the relationship of the points or lines shown hereon to true boundary locations.*



Sheet 1 of 1

Cadme MB: 79-6