

C12490.TIF

Street:

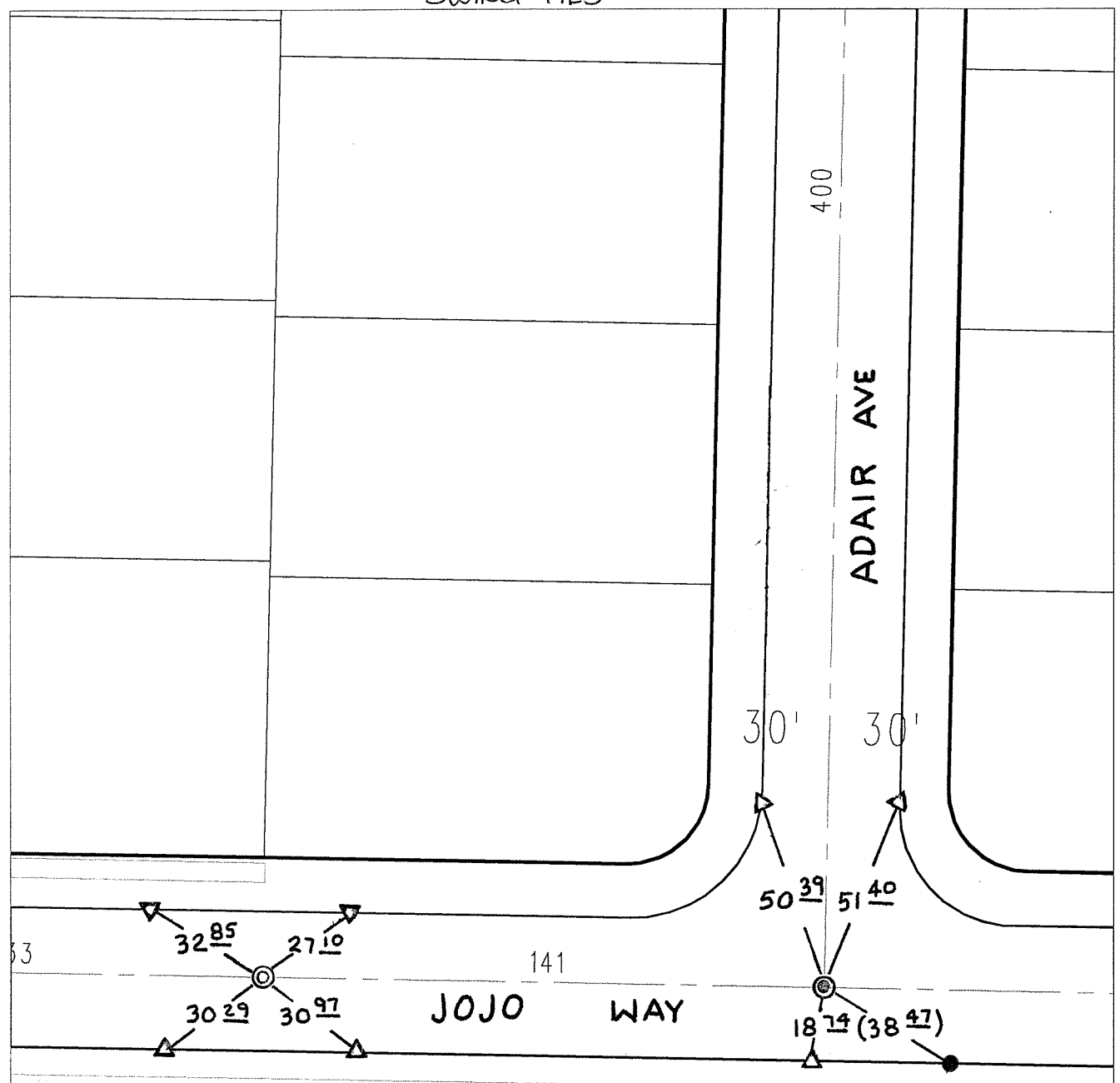
JOJO WAY

X-Street:

ADAIR AVENUE

OFFICIAL USE ONLY

SWING TIES



FD 1" I.P. .120 DN  
 RESET W/PK 4  
 CITY SURTAG  
 FLUSH 9/14/07

FD PK NAIL W/RIV  
 CITY ENG TAG FLUSH

△ SET "C" NAIL & CITY TIE TAG ON T/C

- × FD. Ramset Nail on T/C
- FD. LD. & TK. on T/C
- FD. "C" Nail on T/C
- Set LD. & TK. on T/C

P.K. and City Engineer tag to be set @  
 surface after street construction is  
 complete. (If possible)

Scale: 1" = 40'  
 Date: 10/17/06  
 Drawn by: L. Harris  
 F.B.:  
 TR-Sec: T2SR6W-36

## OFFICIAL TIE PLAT

### CITY OF RIVERSIDE

*These ties are for the purpose of perpetuating the found  
 monumentation. No claim is made as to the relationship of  
 the points or lines shown hereon to true boundary locations.*



Sheet 1 of 1  
 Cadme MB: 49-4