

C12495. 71E

Street:

MIAMI STREET

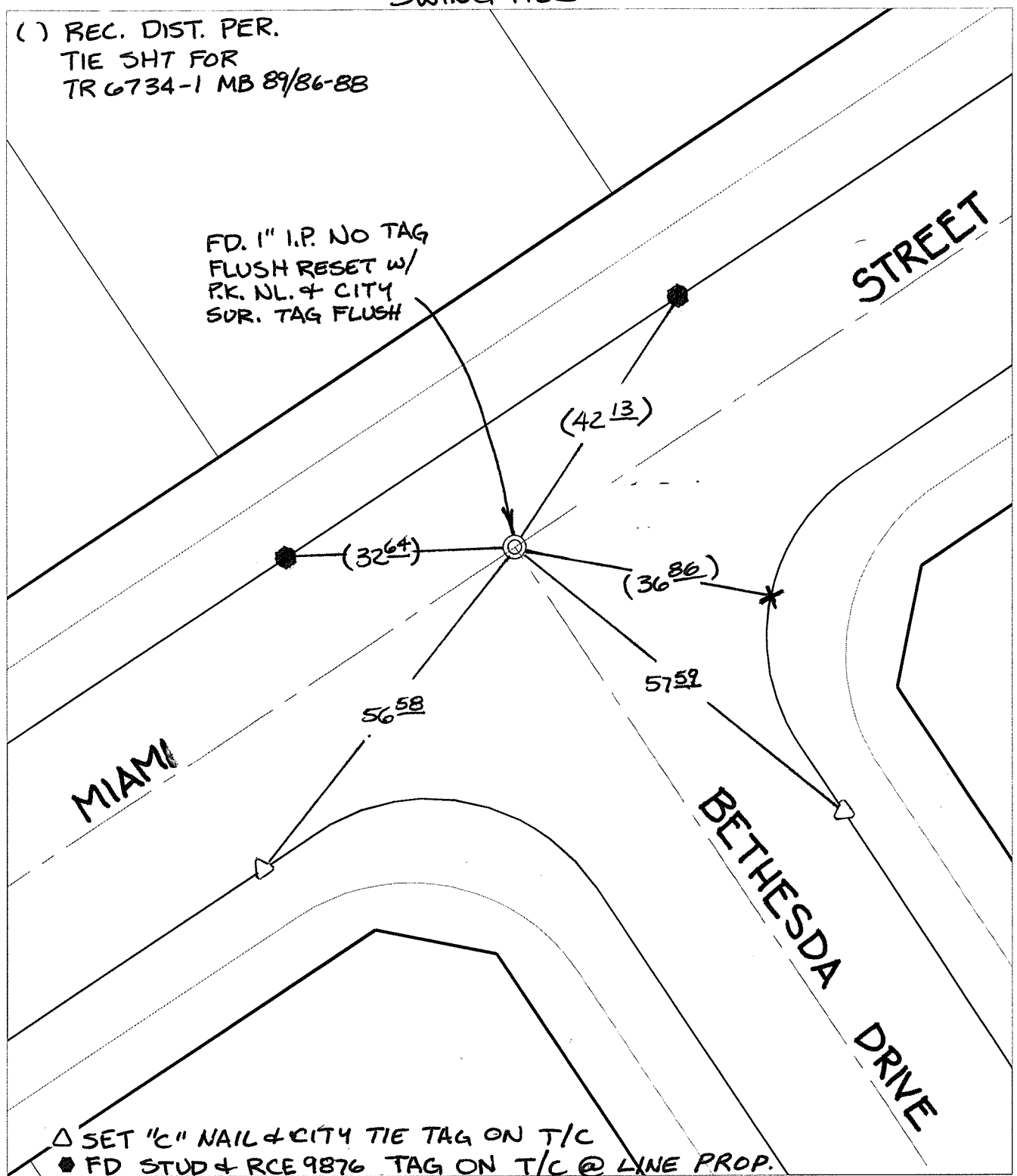
X-Street:
OFFICIAL USE ONLY

BETHESDA DRIVE

SWING TIES

() REC. DIST. PER.
TIE SHT FOR
TR 6734-1 MB 89/86-88

FD. 1" I.P. NO TAG
FLUSH RESET w/
P.K. NL. & CITY
SUR. TAG FLUSH



△ SET "C" NAIL & CITY TIE TAG ON T/C
 ● FD STUD & RCE 9876 TAG ON T/C @ LINE PROP.


- × FD. Ramset Nail on T/C ● FD. LD. & TK. on T/C P.K. and City Engineer tag to be set @ surface after street construction is complete. (If possible)
- FD. "C" Nail on T/C ○ Set LD. & TK. on T/C

Scale: 1" = 20'
 Date: 12/15/08
 Drawn by: pw
 F.B.:
 TR-Sec: T3SR5W-3

OFFICIAL TIE PLAT

CITY OF RIVERSIDE

These ties are for the purpose of perpetuating the found monumentation. No claim is made as to the relationship of the points or lines shown hereon to true boundary locations.



Sheet 1 of 1
 Cadme MB: 53-8