

C12498.71E

Street:

MIAMI STREET

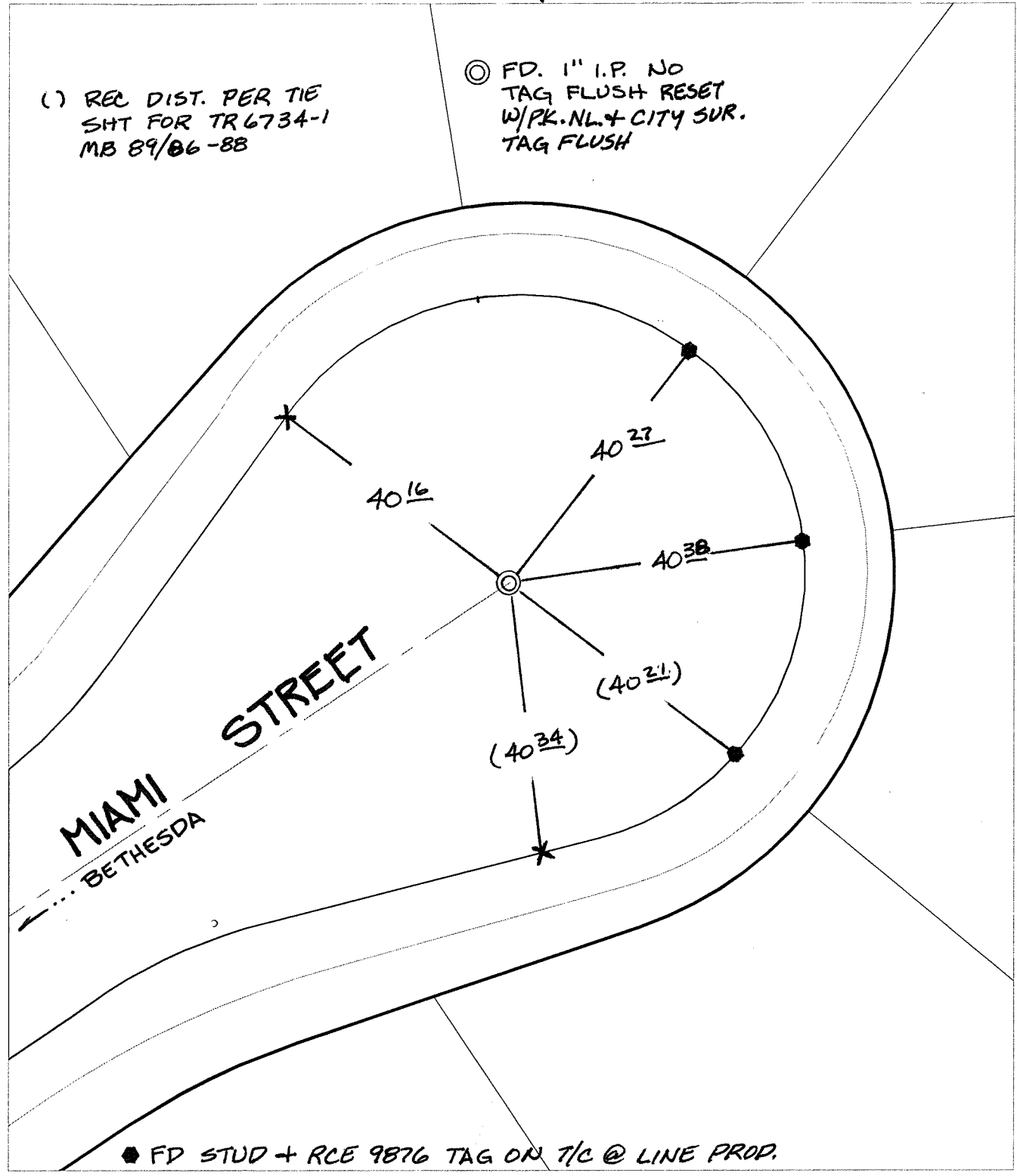
X-Street:  
OFFICIAL USE ONLY

CUL-DE-SAC

SWING TIES

(1) REC. DIST. PER TIE  
SHT FOR TR 6734-1  
MB 89/86-88

⊙ FD. 1" I.P. NO  
TAG FLUSH RESET  
W/PK. NL. + CITY SUR.  
TAG FLUSH



● FD STUD + RCE 9876 TAG ON T/C @ LINE PROP.

- ✕ FD. Ramset Nail on T/C
  - FD. LD. & TK. on T/C
  - FD. "C" Nail on T/C
  - Set LD. & TK. on T/C
- P.K. and City Engineer tag to be set @ surface after street construction is complete. (If possible)*

Scale: 1" = 20'

Date: 02/17/09

Drawn by: pw

F.B.:

TR-Sec: T3SR5W-3

## OFFICIAL TIE PLAT

### CITY OF RIVERSIDE

*These ties are for the purpose of perpetuating the found monumentation. No claim is made as to the relationship of the points or lines shown hereon to true boundary locations.*



Sheet 1 of 1

Cadme MB: 53-8