

C12527.71E

Street:

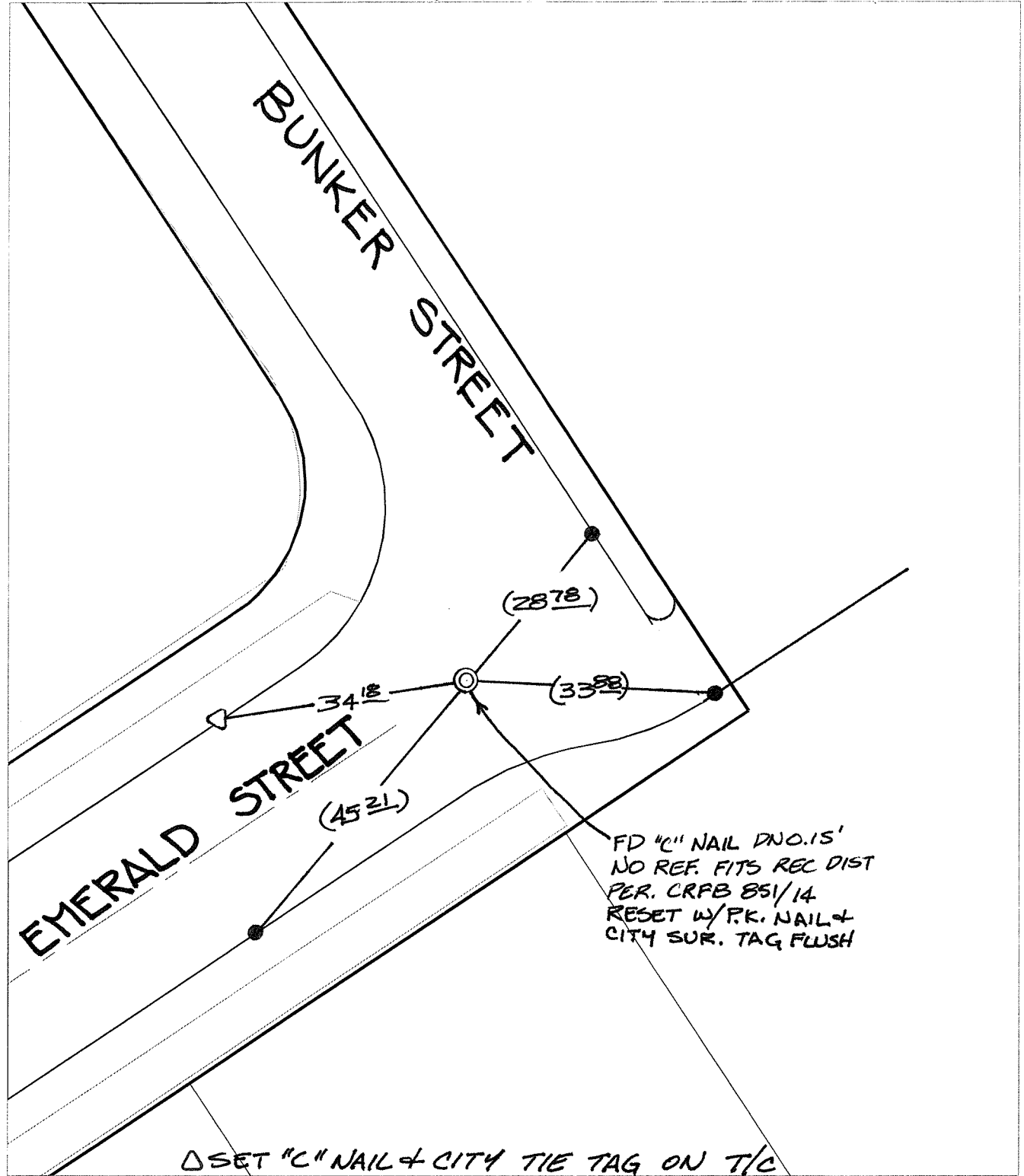
EMERALD STREET

X-Street:

BUNKER STREET

OFFICIAL USE ONLY

SWING TIES



△ SET "C" NAIL + CITY TIE TAG ON T/C

FD "C" NAIL DNO.15'  
NO REF. FITS REC DIST  
PER. CRFB 851/14  
RESET W/P.K. NAIL +  
CITY SUR. TAG FLUSH

- × FD. Ramset Nail on T/C
- FD. LD. & TK. on T/C
- FD. "C" Nail on T/C
- Set LD. & TK. on T/C

P.K. and City Engineer tag to be set @ surface after street construction is complete. (If possible)

Scale: 1" = 20'

Date: 02/17/09

Drawn by: pw

F.B.:

TR-Sec: T3SR5W-3

**OFFICIAL TIE PLAT**  
CITY OF RIVERSIDE

*These ties are for the purpose of perpetuating the found monumentation. No claim is made as to the relationship of the points or lines shown hereon to true boundary locations.*

Sheet 1 of 1

Cadme MB: 68-2