

Street:

VICTORIA AVENUE

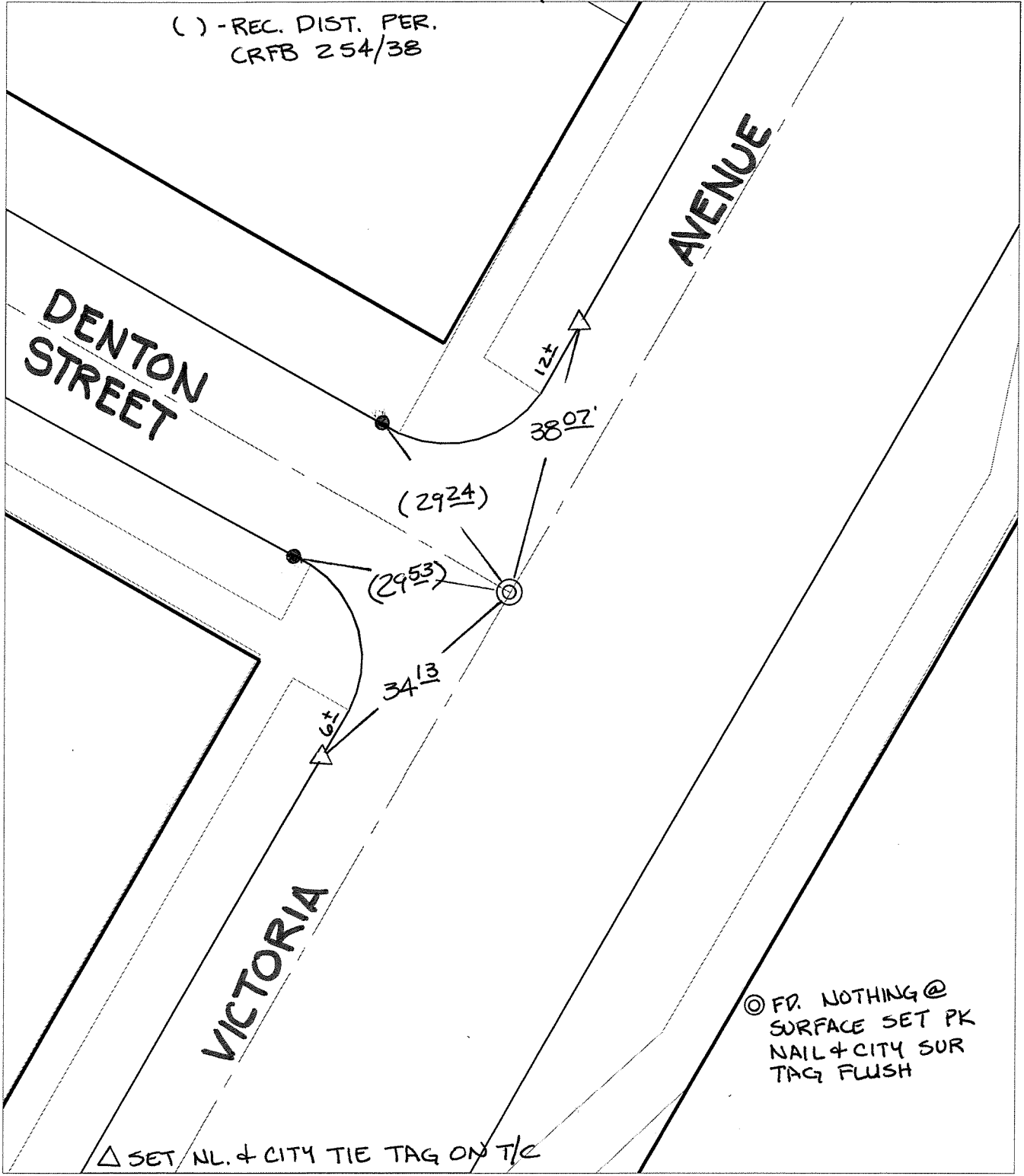
X-Street:

DENTON STREET

OFFICIAL USE ONLY

SWING TIES

( ) - REC. DIST. PER.  
CRFB 254/38



⊗ FD. NOTHING @  
SURFACE SET PK  
NAIL + CITY SUR  
TAG FLUSH

△ SET NL. + CITY TIE TAG ON T/C


- ⊗ FD. Ramset Nail on T/C    ● FD. LD. & TK. on T/C
- FD. "C" Nail on T/C      ○ Set LD. & TK. on T/C

P.K. and City Engineer tag to be set @  
surface after street construction is  
complete. (If possible)

Scale: 1" = 20'  
 Date: 11/03/04  
 Drawn by: survey  
 F.B.:  
 TR-Sec: T2SR5W-26

**OFFICIAL TIE PLAT**  
**CITY OF RIVERSIDE**

*These ties are for the purpose of perpetuating the found  
 monumentation. No claim is made as to the relationship of  
 the points or lines shown hereon to true boundary locations.*



Sheet 1 of 1  
 Cadme MB: 40-5