

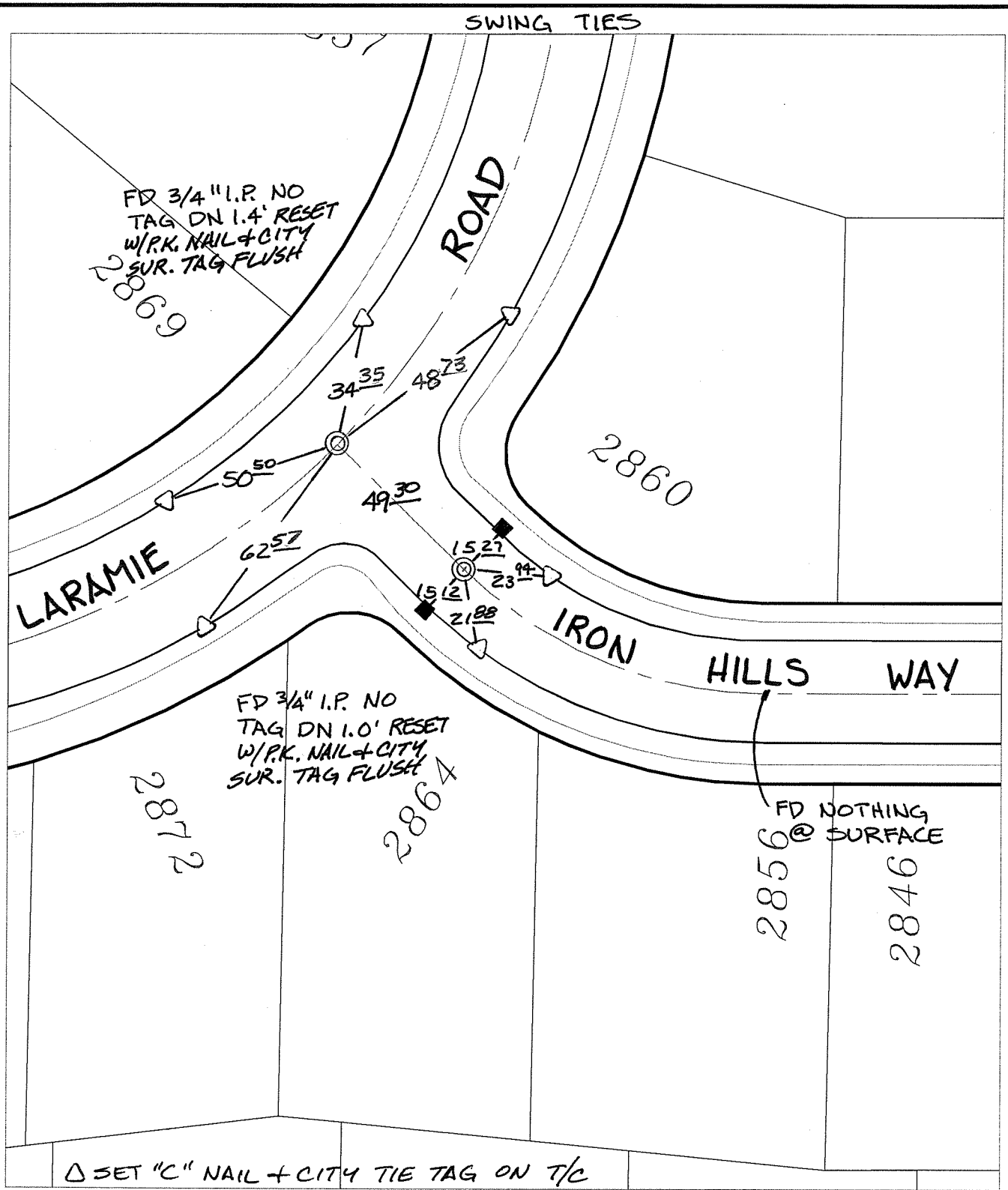
C12586.TIE

Street:

LARAMIE ROAD

X-Street:  
OFFICIAL USE ONLY

IRON HILLS WAY



△ SET "C" NAIL + CITY TIE TAG ON T/C

- ✕ FD. Ramset Nail on T/C
  - FD. LD. & TK. on T/C
  - FD. "C" Nail on T/C
  - Set LD. & TK. on T/C
- P.K. and City Engineer tag to be set @ surface after street construction is complete. (If possible)

Scale: 1" = 40'

Date: 02/09/09

Drawn by: pw

F.B.:

TR-Sec: T2SR5W-35

**OFFICIAL TIE PLAT**  
CITY OF RIVERSIDE

*These ties are for the purpose of perpetuating the found monumentation. No claim is made as to the relationship of the points or lines shown hereon to true boundary locations.*

Sheet 1 of 1

Cadme MB: 54-4