

SWING TIES

C12608.TIF

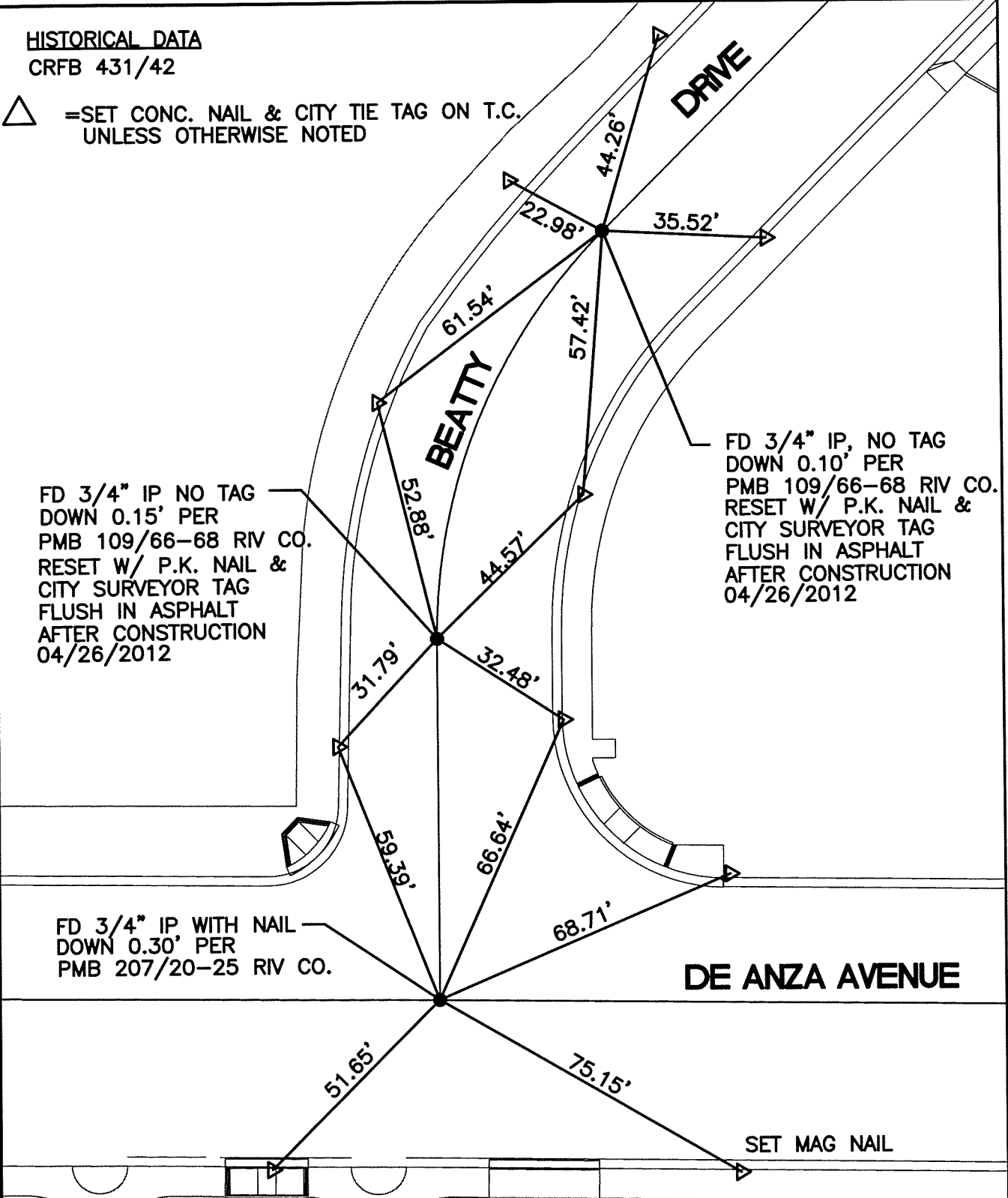
HISTORICAL DATA

CRFB 431/42

△ =SET CONC. NAIL & CITY TIE TAG ON T.C.
UNLESS OTHERWISE NOTED

STREET: BEATTY DRIVE

X-STREET: DE ANZA AVENUE
OFFICIAL USE ONLY



FD 3/4" IP NO TAG
DOWN 0.15' PER
PMB 109/66-68 RIV CO.
RESET W/ P.K. NAIL &
CITY SURVEYOR TAG
FLUSH IN ASPHALT
AFTER CONSTRUCTION
04/26/2012

FD 3/4" IP, NO TAG
DOWN 0.10' PER
PMB 109/66-68 RIV CO.
RESET W/ P.K. NAIL &
CITY SURVEYOR TAG
FLUSH IN ASPHALT
AFTER CONSTRUCTION
04/26/2012

FD 3/4" IP WITH NAIL
DOWN 0.30' PER
PMB 207/20-25 RIV CO.

SET MAG NAIL

SCALE: 1"=30'
DATE: 5/07/12
DRAWN BY: B DURENTE
F.B. SEE HISTORICAL DATA
SEC: 34 T.2S.,R.5W

OFFICIAL TIE PLAT CITY OF RIVERSIDE

THESE TIES ARE FOR THE PURPOSE OF PERPETUATING THE FOUND
MONUMENTATION. NO CLAIM IS MADE AS THE RELATIONSHIP OF THE
POINTS OR LINES SHOWN HEREON TO TRUE BOUNDARY LOCATIONS

