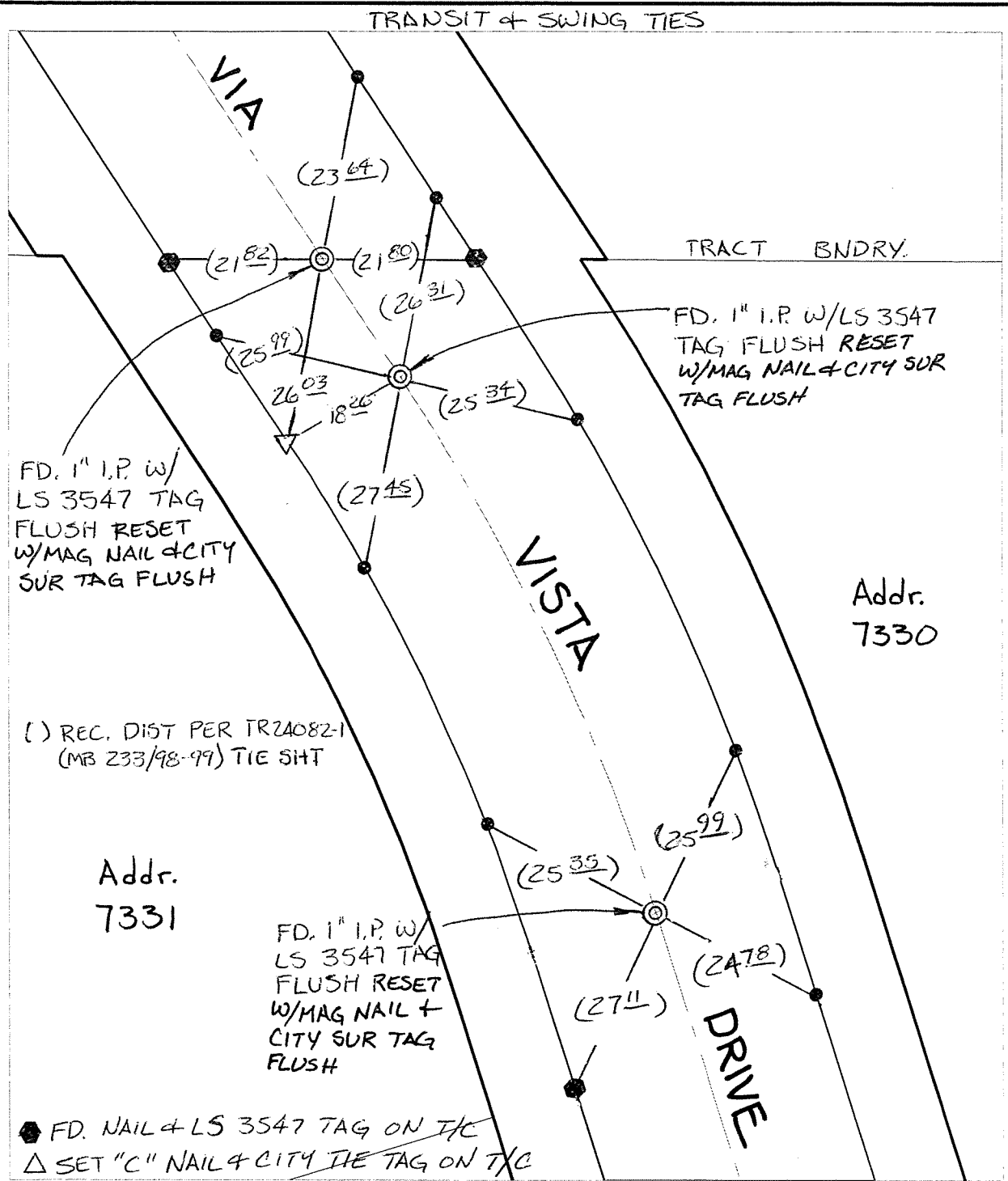


C12683.71F

Street: VIA VISTA DRIVE TR BNDY X-St S. OF OVERLOOK PARKWAY

OFFICIAL USE ONLY



FD. 1" I.P. W/
LS 3547 TAG
FLUSH RESET
W/MAG NAIL & CITY
SUR TAG FLUSH

FD. 1" I.P. W/LS 3547
TAG FLUSH RESET
W/MAG NAIL & CITY SUR
TAG FLUSH

() REC. DIST PER TR24082-1
(MB 233/98-99) TIE SHIT

Addr.
7331

Addr.
7330

FD. 1" I.P. W/
LS 3547 TAG
FLUSH RESET
W/MAG NAIL +
CITY SUR TAG
FLUSH


● FD. NAIL & LS 3547 TAG ON T/C
△ SET "C" NAIL & CITY TIE TAG ON T/C

- × FD. Ramset Nail on T/C ● FD. LD. & TK. on T/C P.K. and City Engineer tag to be set @ surface after street construction is complete. (If possible)
- FD. "C" Nail on T/C ○ Set LD. & TK. on T/C

Scale: 1" = 20'
 Date: 01/06/12
 Drawn by: pw
 F.B.:
 TR-Sec: T3SR4W-7

OFFICIAL TIE PLAT
CITY OF RIVERSIDE

These ties are for the purpose of perpetuating the found monumentation. No claim is made as to the relationship of the points or lines shown hereon to true boundary locations.



Sheet 1 of 1
 Cadme MB: 71-7