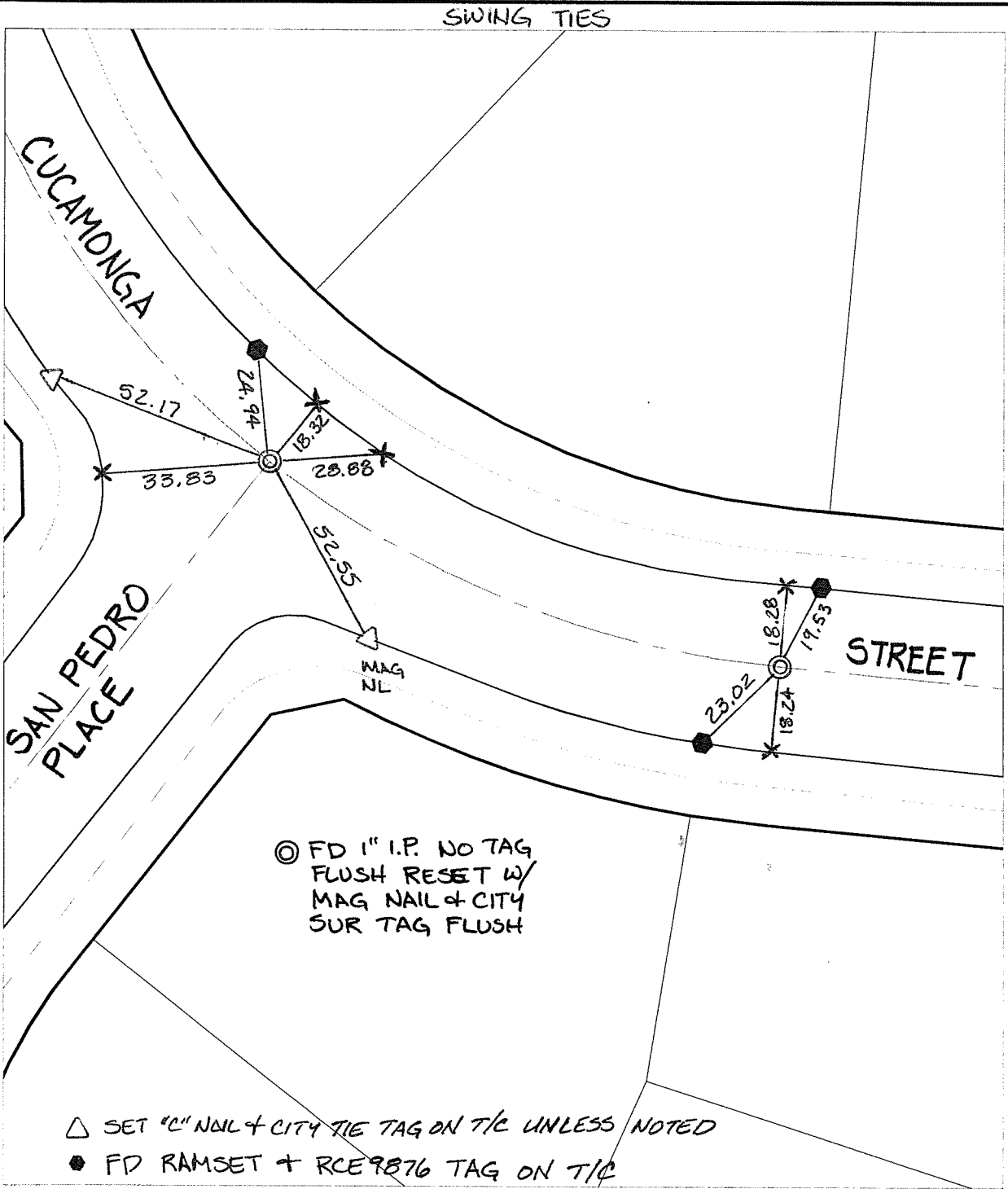


C 12707.71E

Street: CUCAMONGA STREET X-Street: SAN PEDRO PLACE
OFFICIAL USE ONLY




△ SET "C" NAIL + CITY TIE TAG ON T/C UNLESS NOTED
 ● FD RAMSET + RCE9876 TAG ON T/C

× FD. Ramset Nail on T/C ● FD. LD. & TK. on T/C P.K. and City Engineer tag to be set @ surface after street construction is complete. (If possible)
 ■ FD. "C" Nail on T/C ○ Set LD. & TK. on T/C

Scale: 1" = 30'
 Date: 02/13/12
 Drawn by: pw
 F.B.:
 TR-Sec: T2SR6W-35

OFFICIAL TIE PLAT
CITY OF RIVERSIDE

These ties are for the purpose of perpetuating the found monumentation. No claim is made as to the relationship of the points or lines shown hereon to true boundary locations.



Sheet 1 of 1
 Cadme MB: 49-4