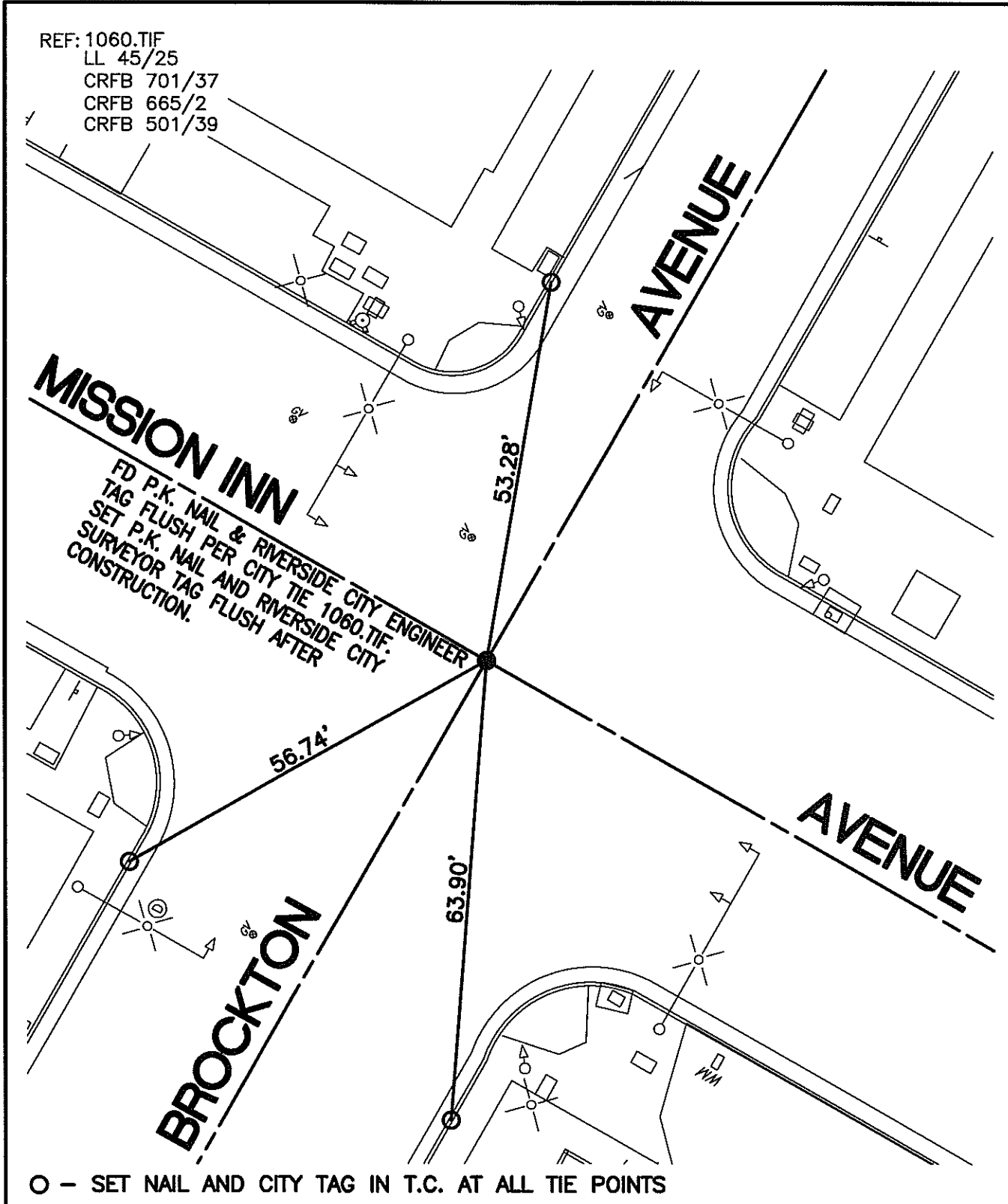


# SWING TIES

CITY OF RIVERSIDE

STREET: MISSION INN AVENUE


X-STREET: BROCKTON AVENUE  
OFFICIAL USE ONLY



SCALE: 1"=20'
DATE: 3/29/17
DRAWN BY: CURT
F.B.:
SEC: 23 2.TS., R.5W.

**OFFICIAL TIE PLAT**  
CITY OF RIVERSIDE

THESE TIES ARE FOR THE PURPOSE OF PERPETUATING THE FOUND MONUMENTATION. NO CLAIM IS MADE AS THE RELATIONSHIP OF THE POINTS OR LINES SHOWN HEREON TO TRUE BOUNDARY LOCATIONS

  
 SHEET 1 OF 1