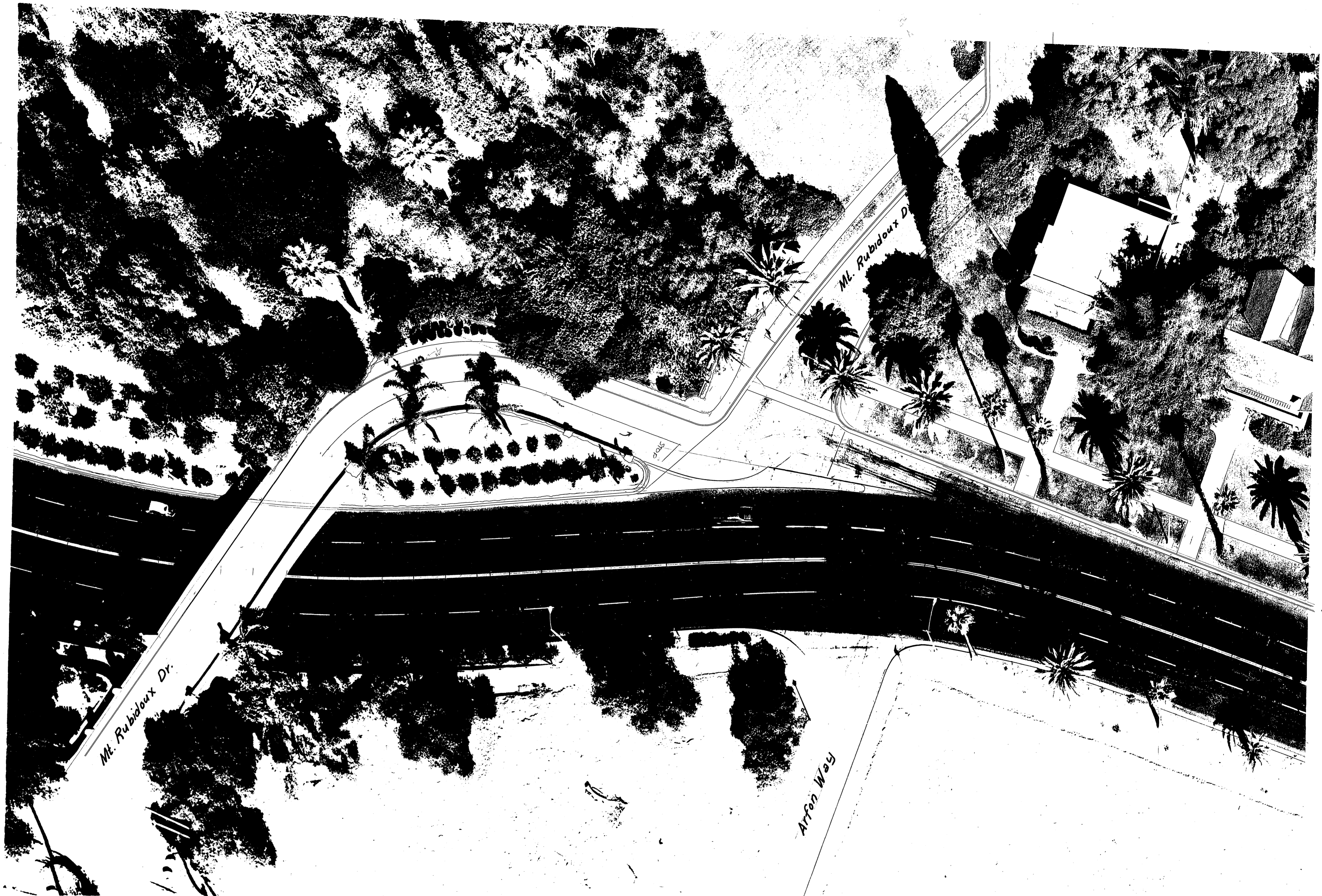


Raised Pavement Markers
as listed on sheet 1

See sheet 1

City of Riverside Public Works Department Traffic Engineering Division		Striping & Markings Buena Vista Drive	XL-143
Design: <i>D. Ray</i> Drawn: <i>D. Ray</i> Checked: <i>[Signature]</i> Date: <i>6/21/84</i>	Approved: <i>[Signature]</i> City Traffic Engineer	Scale: 1" = 50' Sheet: 2 of 2	83 Major St. Rehab.



See Sheet 2

See XL-141

Lane Line : 4" white, Stripe 1' gap 17'
 1 way white raised reflective
 Markers 24' o.c.

Center Line : Double 4" yellow
 2 Way Amber raised reflective
 Markers 12' o.c.

City of Riverside Public Works Department Traffic Engineering Division		<i>Striping & Markings</i> Bunea Vista Drive	Scale: 1" = 20' XL-143
Design: <i>D. Ray</i> Checked: Drawn: <i>D. Ray</i> As Built: Revisions: <small>1983 Major St. Rehab</small>	Approved: <i>[Signature]</i> City Traffic Engineer	<i>4/2/82</i> Date	Sheet 1 of 2