

SCALE NONE

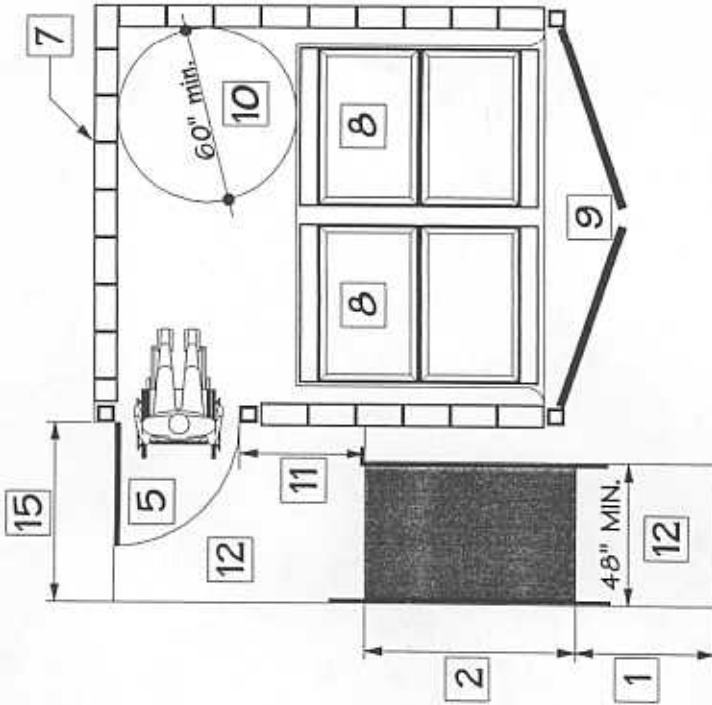
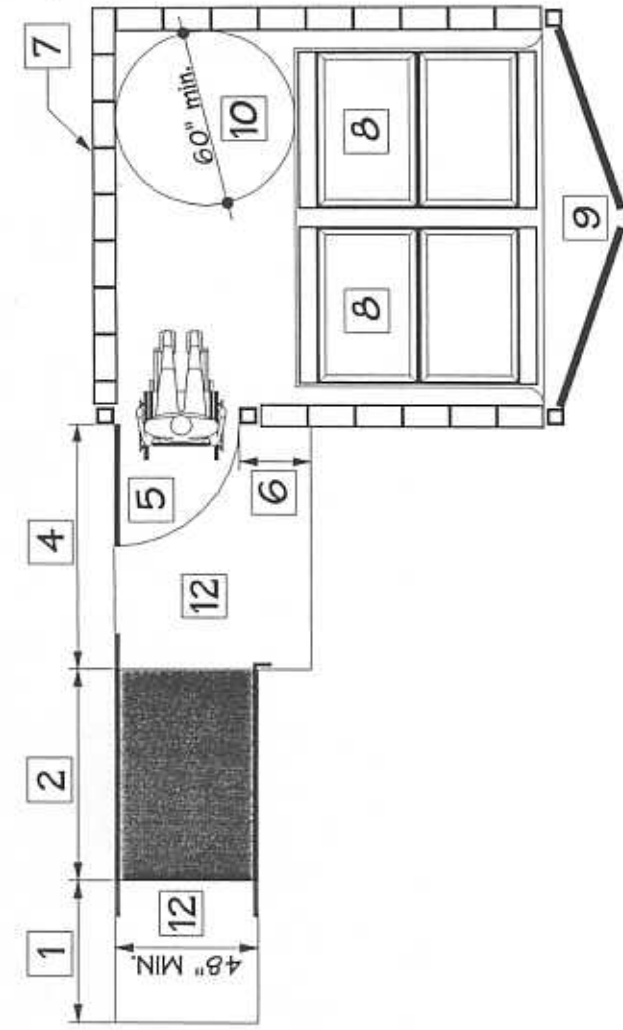
FGH 9/03
DRAWN DATE

REV.	DATE	APPR.
1		
2		
3		
4		
5		

ACCESSIBLE TRASH ENCLOSURES

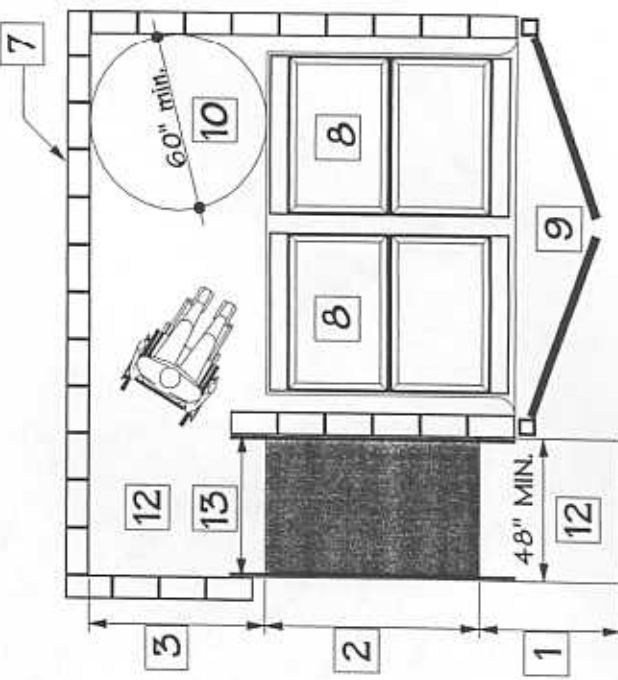
RDA - 5.0

SHEET



GATED PEDESTRIAN ENTRY w/ 90-DEGREE TURN

GATED PEDESTRIAN ENTRY w/ STRAIGHT-IN ACCESS



KEYNOTES

- 1 LANDING @ LOWER LEVEL (MIN. 4'-0" L.)
- 2 MIN. 4'-8" WIDE RAMP @ MAX. 1:12 (8.33%) SLOPE (HANDRAILS REQUIRED IF RAMP EXCEEDS 6 FEET IN LENGTH OR 6 INCHES IN HEIGHT)
- 3 LANDING @ UPPER LEVEL (MIN. 5'-0" L.)
- 4 GATE WIDTH + 42" MIN.
- 5 PEDESTRIAN GATE (MIN. 3'-0" to MAX. 4'-0" WIDTH) w/ ACCESSIBLE DOOR OPERATING HARDWARE
- 6 MIN. 24" STRIKE-EDGE CLEARANCE
- 7 TRASH ENCLOSURE WALLS (CONFIGURATION MAY VARY)
- 8 TRASH BINS (SIZE & NUMBER AS REQUIRED BY PLANNING DEPT.)
- 9 TRASH ENCLOSURE GATES (DESIGN & MATERIALS AS REQUIRED BY PLANNING DEPT.)
- 10 WHEELCHAIR TURNING CIRCLE (MIN. 60" DIA.)
- 11 MIN. 42" STRIKE-EDGE CLEARANCE
- 12 MAX. 2% SLOPE @ ALL LANDINGS
- 13 MIN. 42" CLEAR
- 14 MIN. 48" CLEAR
- 15 MIN. 60" CLEAR

NON-GATED PEDESTRIAN ENTRY w/ 90-DEGREE TURN

B

C