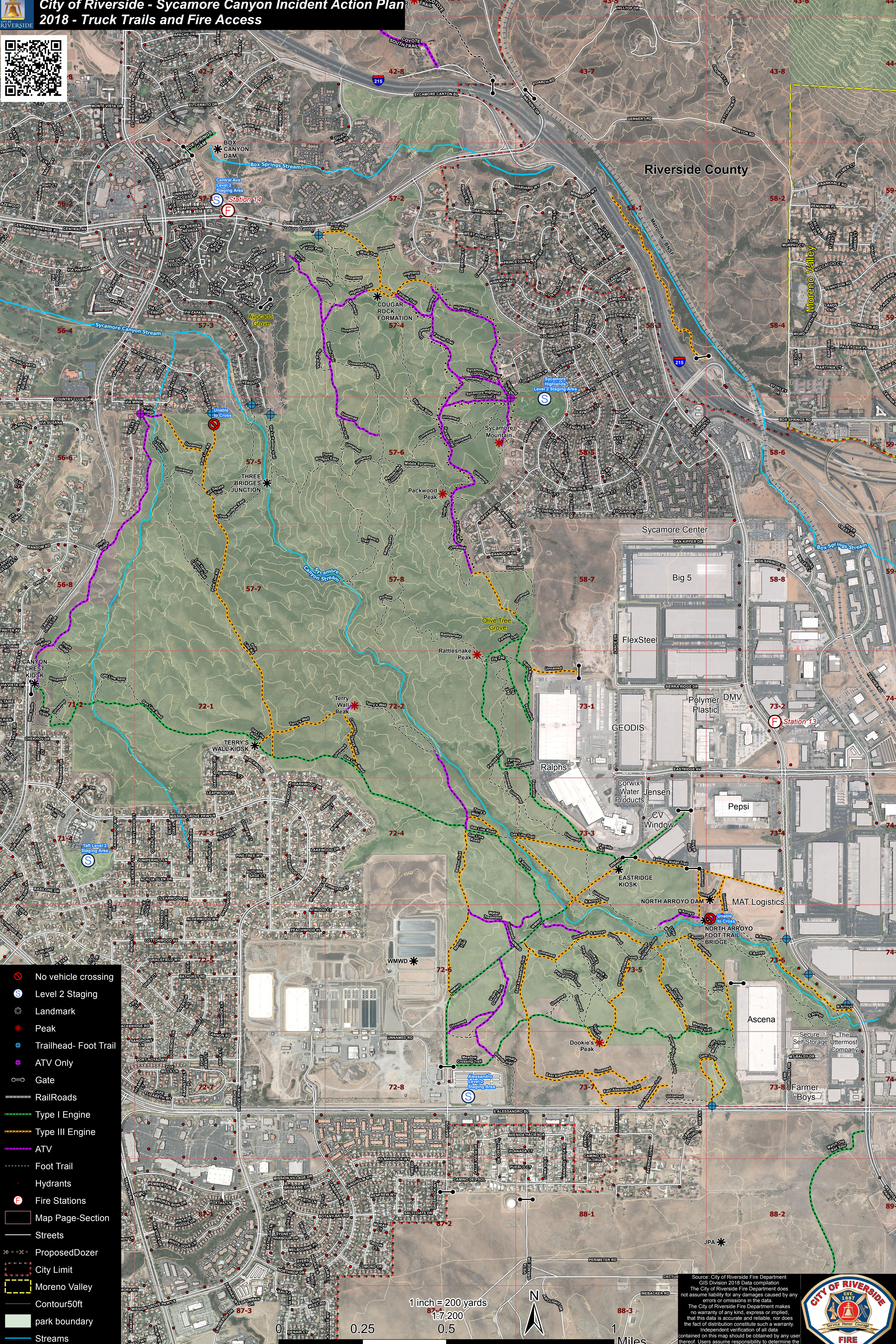


City of Riverside - Sycamore Canyon Incident Action Plan 2018 - Truck Trails and Fire Access



- No vehicle crossing
- Level 2 Staging
- Landmark
- Peak
- Trailhead- Foot Trail
- ATV Only
- Gate
- RailRoads
- Type I Engine
- Type III Engine
- ATV
- Foot Trail
- Hydrants
- Fire Stations
- Map Page-Section
- Streets
- Proposed Dozer
- City Limit
- Moreno Valley
- Contour 50ft
- park boundary
- Streams

1 inch = 200 yards
1:7,200



Source: City of Riverside Fire Department GIS Division 2018 Data compilation
The City of Riverside Fire Department does not assume liability for any damages caused by any errors or omissions in the data.
The City of Riverside Fire Department makes no warranty of any kind, express or implied, that this data is accurate and reliable, nor does the fact of distribution constitute such a warranty.
Independent verification of all data contained on this map should be obtained by any user thereof. Users assume responsibility to determine the appropriate use of these data.

