

CERT

INCIDENT COMMAND
SYSTEM

(ICS)

HISTORY OF INCIDENT COMMAND SYSTEM (ICS)

ICS RESULTED FROM THE NEED FOR A NEW APPROACH TO THE PROBLEM OF MANAGING RAPIDLY MOVING WILDLAND FIRES. SOME OF THE PROBLEMS THEY FACED ARE THE SAME PROBLEMS YOU WILL NEED TO ADDRESS AS A CERT GROUP.

- TOO MANY PEOPLE REPORTING TO ONE SUPERVISOR.
- DIFFERENT EMERGENCY ORGANIZATIONAL STRUCTURES.
- LACK OF RELIABLE INCIDENT INFORMATION.
- INADEQUATE AND INCOMPATIBLE COMMUNICATIONS.
- UNCLEAR LINES OF AUTHORITY.
- TERMINOLOGY DIFFERENCES.
- UNCLEAR OR UNSPECIFIED OBJECTIVES.

THE INCIDENT COMMAND SYSTEM (ICS) WAS DEVELOPED BY AN INTERAGENCY TASK FORCE WORKING IN COOPERATION WITH LOCAL, STATE, AND FEDERAL AGENCIES CALLED FIRESCOPE (FIREFIGHTING RESOURCES OF CALIFORNIA ORGANIZED FOR POTENTIAL EMERGENCIES). IT WAS INITIALLY DESIGNED FOR RESPONDING TO DISASTROUS WILDLAND FIRES. LATER IT WAS DISCOVERED THAT WILDLAND FIRE INCIDENTS WERE SIMILAR TO SEEN BY LAW ENFORCEMENT, HAZARDOUS MATERIALS, AND OTHER KINDS OF SITUATIONS.

- THEY CAN OCCUR WITH NO ADVANCE NOTICE.
- THEY DEVELOP RAPIDLY.
- UNCHECKED, THEY MAY GROW IN SIZE OR COMPLEXITY.
- PERSONAL RISK FOR RESPONSE PERSONNEL CAN BE HIGH.
- RISK OF LIFE AND PROPERTY LOSS CAN BE HIGH.

ICS IS NOW WIDELY USED THROUGHOUT THE UNITED STATES BY FIRE AGENCIES, AND IS INCREASINGLY USED FOR LAW ENFORCEMENT, OTHER PUBLIC-SAFETY APPLICATIONS, AND FOR EMERGENCY AND EVENT MANAGEMENT.

IN 1980, THE ICS THAT WAS ORIGINALLY DEVELOPED IN CALIFORNIA UNDER FIRESCOPE MADE THE TRANSITION INTO A NATIONAL PROGRAM CALLED NATIONAL INTERAGENCY INCIDENT MANAGEMENT SYSTEM (NIIMS). AT THAT TIME ICS BECAME THE BACKBONE OF A WIDER-BASED SYSTEM FOR ALL FEDERAL AGENCIES WITH WILDLAND FIRE MANAGEMENT RESPONSIBILITIES. SUBSEQUENTLY, MANY OTHER AGENCIES AND ORGANIZATIONS WITH EMERGENCY MANAGEMENT RESPONSIBILITIES HAVE ADOPTED ICS.

THE ICS THAT IS BEING ADOPTED BY FIRE AGENCIES, POLICE AGENCIES, AND OTHER MUNICIPALITIES ACROSS THE STATE OF CALIFORNIA IS CALLED STANDARDIZED EMERGENCY MANAGEMENT SYSTEM (SEMS).

ADVANTAGES OF INCIDENT COMMAND SYSTEM (ICS)

1. UNIFIED COMMAND STRUCTURE

- CHAIN OF COMMAND
- TRANSFER OF COMMAND
- UNITY OF COMMAND
- SPAN OF CONTROL

2. COMMON TERMINOLOGY

3. MODULAR ORGANIZATION

4. PERSONNEL ACCOUNTABILITY

5. INCIDENT ACTION PLANS

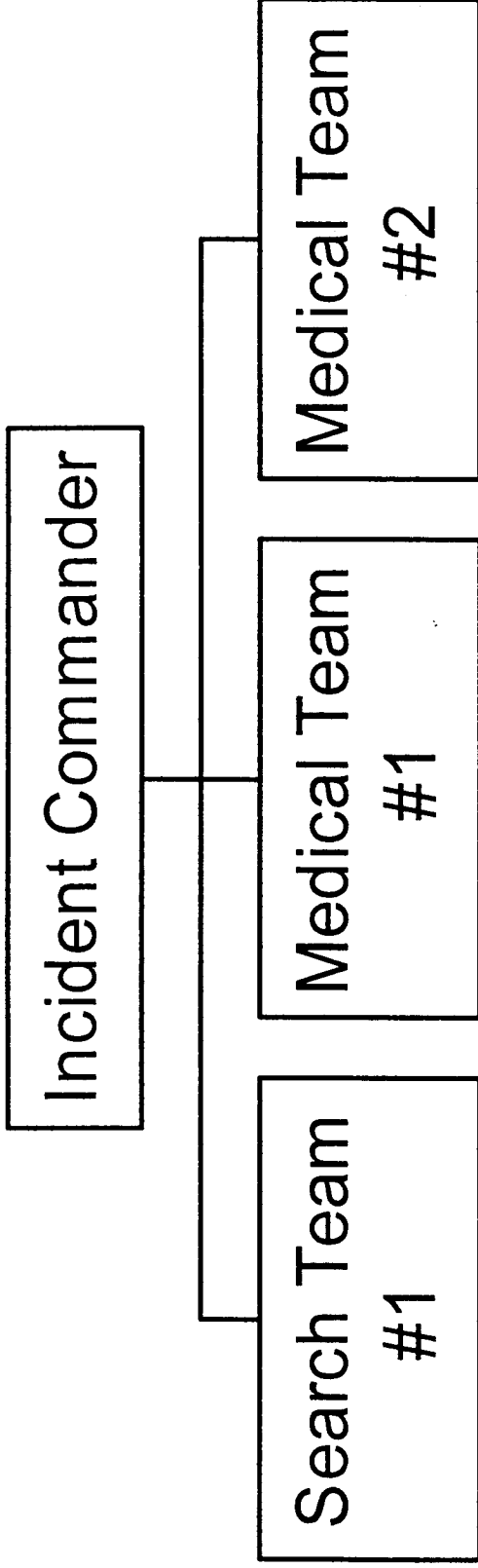
- OBJECTIVES
- ASSIGNMENTS AND TACTICS

6. COMPREHENSIVE RESOURCE MANAGEMENT

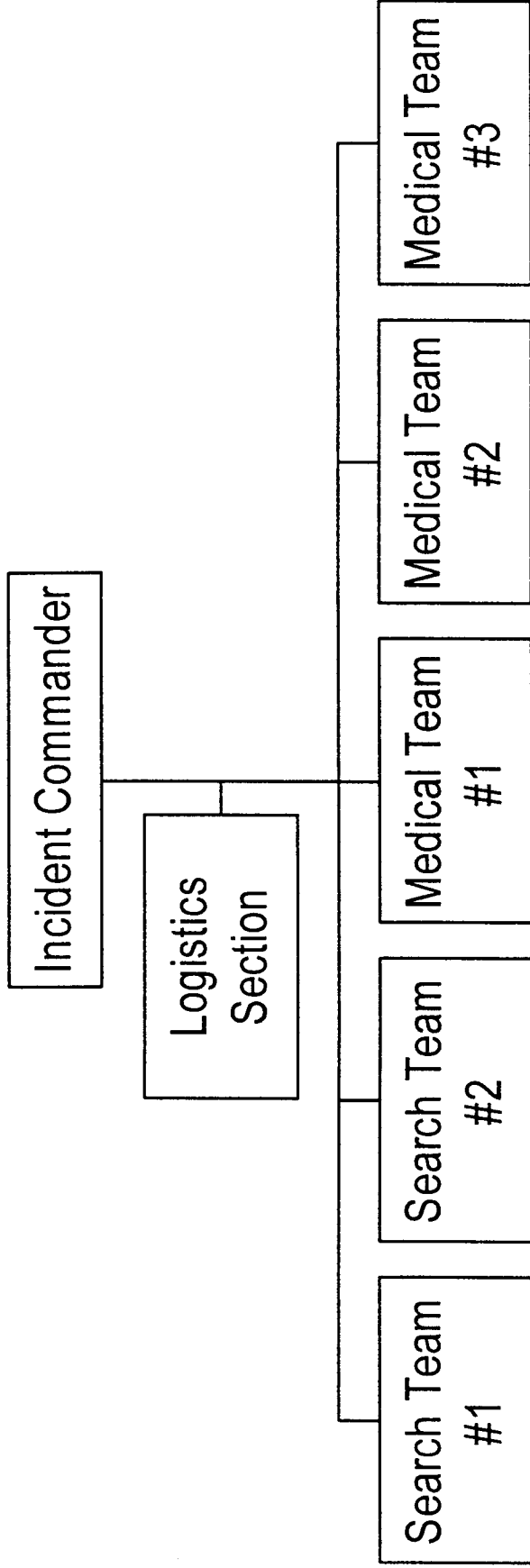
OBJECTIVES OF CERT ORGANIZATION

- IDENTIFY THE SCOPE OF THE INCIDENT.
- DETERMINE AN OVERALL STRATEGY
- DEPLOY RESOURCES
- MAINTAIN COMMUNICATIONS
- REMAIN FLEXIBLE

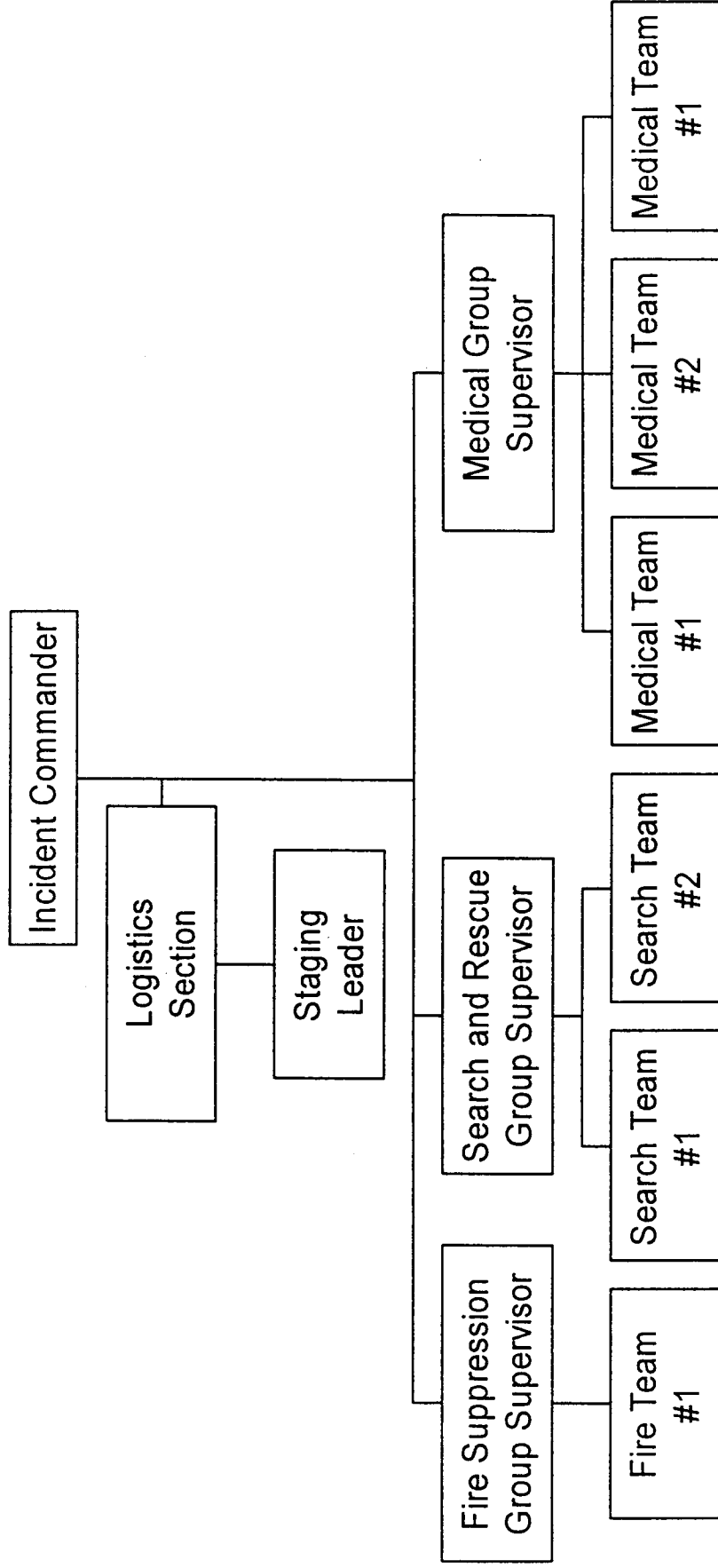
Incident Command System



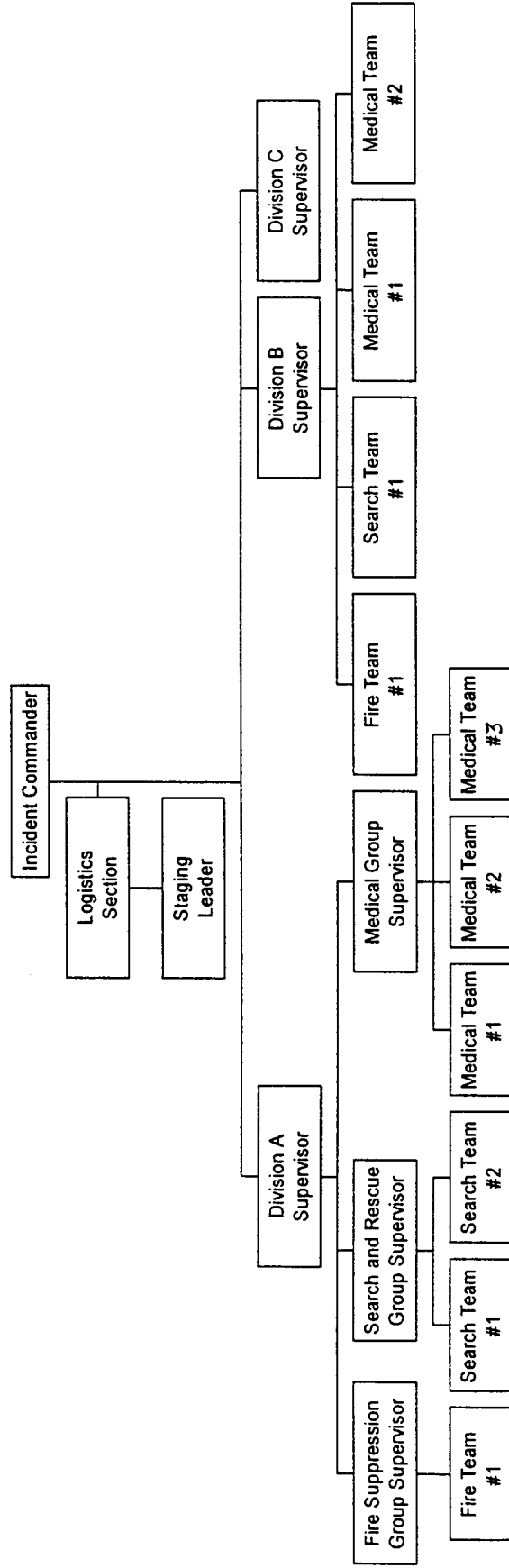
Incident Command System



Incident Command System



Incident Command System



**INCIDENT
COMMAND
PACKET**

INCIDENT COMMANDER

YOU ARE THE DECISION MAKER

SET-UP YOUR ORGANIZATION

ORGANIZE YOUR COMMAND POST

- SCRIBE
- RUNNER
- LOGISTICS
- ASSISTANTS

ESTABLISH A STAGING LOCATION

IDENTIFY INCIDENTS

- WHAT WE CAN HANDLE
- WHAT WE CAN NOT HANDLE

PRIORITIZE INCIDENTS (CONSIDERATIONS)

- YOUR TRAINING
- YOUR RESOURCES
- LIFE HAZARD
- PROPERTY HAZARD
- PROBABILITY OF SUCCESS

SEND RESOURCES TO HANDLE YOUR INCIDENTS

- LEADERS
- PERSONNEL
- EQUIPMENT

MAINTAIN DOCUMENTATION OF ALL ACTIVITIES

CONSIDERATIONS

SPAN OF CONTROL – 3 TO 7 (5 OPTIMUM)

MODERATELY DAMAGED STRUCTURE WILL REQUIRE ALL 3 TEAM TYPES TO EFFECTIVELY HANDLE THE INCIDENT.

TEAM FUNCTIONS MAY BE COMBINED.

INCIDENTS MAY BE COMBINED.

ORGANIZATION MUST GROW AS YOUR RESOURCES AND NUMBER OF INCIDENTS GROW.

A MAP MAY ASSIST YOU IN VISUALIZING WHERE YOUR PROBLEMS AND RESOURCES ARE LOCATED.

LOGISTICS

CHOOSE A STAGING LEADER WHEN THE INCIDENT COMMANDER ESTABLISHES A STAGING LOCATION.

CHOOSE A RUNNER (IF NEEDED)

MAINTAIN A CURRENT LIST OF ALL RESOURCES AT ALL TIMES

- PERSONNEL
- EXTINGUISHERS
- BLANKETS
- WRENCHES
- BANDAGES
- ETC.

ASSIST THE INCIDENT COMMANDER (I.C.) WITH DECISION MAKING BY KEEPING I.C. UPDATED ON AMOUNT OF RESOURCES.

DETERMINE NEED FOR MORE RESOURCES BASED UPON THE NUMBER OF INCIDENTS THAT HAVE BEEN IDENTIFIED AS HANDLEABLE.

IF YOU ARE FEEL YOU HAVE AN INADEQUATE AMOUNT OF RESOURCES, NOTIFY I.C. AND TRY TO GET MORE WITH I.C. APPROVAL.

STAGING LEADER

YOU REPORT TO LOGISTICS.

MAINTAIN A CURRENT LIST OF ALL RESOURCES AT ALL TIMES.

- PERSONNEL
- EXTINGUISHERS
- BLANKETS
- WRENCHES
- BANDAGES
- ETC.

KEEP LOGISTICS UPDATED AT ALL TIMES.

CHOOSE A RUNNER (IF NEEDED)

YOUR JOB IS TO ADD AND SUBTRACT ONLY!

DIVISION SUPERVISOR

SAFETY IS ALWAYS OUR #1 PRIORITY

- WRITE YOUR ASSIGNMENT DOWN
- OBTAIN RESOURCES (PERSONNEL AND EQUIPMENT)
- MAINTAIN GROUP STATUS SHEET (CONSIDER A SCRIBE)
- INFORM YOUR PERSONNEL OF ASSIGNMENT
- CREATE YOUR TEAMS
- ALWAYS USE A BUDDY SYSTEM
- GIVE YOUR TEAMS THEIR ASSIGNMENT
- ALWAYS DO A SIZE-UP BEFORE BEGINNING YOUR OPERATION
- OVERSEE AND MANAGE YOUR RESOURCES. DO NOT GET INVOLVED.
- YOU ARE THE SAFETY OFFICER. STOP ANY UNSAFE OPERATIONS.
- KEEP INCIDENT COMMANDER UPDATED (NEEDS/PROGRESS/DESCRIPTION).
- MAINTAIN DOCUMENTATION

YOU WILL BE SUPERVISING EITHER MULTIPLE TEAM TYPES OR MULTIPLE GROUP SUPERVISORS.

CONSIDERATIONS

BE FAMILIAR WITH ALL CONSIDERATIONS FOR FIRE; SEARCH AND RESCUE; AND MEDICAL GROUP SUPERVISORS. YOU WILL BE IN CHARGE OF ALL TYPES OF GROUPS OR TEAMS.

FIRE GROUP LEADER

SAFETY IS ALWAYS OUR #1 PRIORITY

- WRITE YOUR ASSIGNMENT DOWN
- OBTAIN RESOURCES (PERSONNEL AND EQUIPMENT)
- MAINTAIN GROUP STATUS SHEET (CONSIDER A SCRIBE)
- INFORM YOUR PERSONNEL OF ASSIGNMENT
- CREATE YOUR TEAMS
- ALWAYS USE A BUDDY SYSTEM
- GIVE YOUR TEAMS THEIR ASSIGNMENT
- ALWAYS DO A SIZE-UP BEFORE BEGINNING YOUR OPERATION
- OVERSEE AND MANAGE YOUR RESOURCES. DO NOT GET INVOLVED.
- YOU ARE THE SAFETY OFFICER. STOP ANY UNSAFE OPERATIONS.
- KEEP INCIDENT COMMANDER UPDATED (NEEDS/PROGRESS/DESCRIPTION).
- MAINTAIN DOCUMENTATION

CONSIDERATIONS

OVERHAUL ALL CLASS A FIRES (WATER ON WOOD)

HANDLE UTILITIES

SEARCH AND RESCUE GROUP LEADER

SAFETY IS ALWAYS OUR #1 PRIORITY

- WRITE YOUR ASSIGNMENT DOWN
- OBTAIN RESOURCES (PERSONNEL AND EQUIPMENT)
- MAINTAIN GROUP STATUS SHEET (CONSIDER A SCRIBE)
- INFORM YOUR PERSONNEL OF ASSIGNMENT
- CREATE YOUR TEAMS
- ALWAYS USE A BUDDY SYSTEM
- GIVE YOUR TEAMS THEIR ASSIGNMENT
- ALWAYS DO A SIZE-UP BEFORE BEGINNING YOUR OPERATION
- OVERSEE AND MANAGE YOUR RESOURCES. DO NOT GET INVOLVED.
- YOU ARE THE SAFETY OFFICER. STOP ANY UNSAFE OPERATIONS.
- KEEP INCIDENT COMMANDER UPDATED (NEEDS/PROGRESS/DESCRIPTION).
- MAINTAIN DOCUMENTATION

CONSIDERATIONS

LIGHTLY DAMAGED STRUCTURE

- SEARCH
- TRIAGE
- REPORT
- TREATMENT (MEDICAL TEAM)
- TRANSPORTATION (MEDICAL TEAM)

MODERATELY DAMAGED STRUCTURE

- UTILITIES (FIRE TEAM)
- SEARCH
- CHECK FOR BREATHING
- STOP MAJOR BLEEDING
- REMOVE FROM STRUCTURE

HEAVILY DAMAGED STRUCTURE

- STAY OUT
- UTILITIES (FIRE TEAM)

MEDICAL GROUP LEADER

SAFETY IS ALWAYS OUR #1 PRIORITY

- WRITE YOUR ASSIGNMENT DOWN
- OBTAIN RESOURCES (PERSONNEL AND EQUIPMENT)
- MAINTAIN GROUP STATUS SHEET (CONSIDER A SCRIBE)
- INFORM YOUR PERSONNEL OF ASSIGNMENT
- CREATE YOUR TEAMS
- ALWAYS USE A BUDDY SYSTEM
- GIVE YOUR TEAMS THEIR ASSIGNMENT
- ALWAYS DO A SIZE-UP BEFORE BEGINNING YOUR OPERATION
- OVERSEE AND MANAGE YOUR RESOURCES. DO NOT GET INVOLVED.
- YOU ARE THE SAFETY OFFICER. STOP ANY UNSAFE OPERATIONS.
- KEEP INCIDENT COMMANDER UPDATED (NEEDS/PROGRESS/DESCRIPTION).
- MAINTAIN DOCUMENTATION

CONSIDERATIONS

MEDICAL TREATMENT AREA

- LARGE ENOUGH FOR ANTICIPATED NUMBER OF VICTIMS
- FREE OF HAZARDS
- GOOD ACCESS
- TRIAGE AREA
- SEPARATE TREATMENT AREAS FOR DELAYED AND IMMEDIATE

NOTIFY OTHER TEAMS AND GROUPS OF LOCATION

RE-TRIAGE PERIODICALLY

SCRIBE

COMMAND POST

MAINTAIN RECORDS AND WRITTEN COMMUNICATIONS FOR THE INCIDENT COMMANDER.

FORMS:

INCIDENT STATUS FORM – TO KEEP TRACK OF STATUS AND PRIORITY OF INCIDENTS THAT CAN BE HANDLED.

DAMAGE ASSESSMENT SURVEY – TO HELP ORGANIZE WHAT INCIDENTS THE IC WILL OR WILL NOT SEND RESOURCES TO.

MESSAGE FORM – TO MAINTAIN COMMUNICATIONS BETWEEN IC AND GROUP OR DIVISION SUPERVISORS.

GROUP OR DIVISION SUPERVISOR

MAINTAIN RECORDS OF YOUR GROUPS ASSIGNMENTS.

FORMS:

GROUP STATUS SHEET – TO RECORD ALL INFORMATION ABOUT THE GROUPS ACTIVITIES.

YOU WILL ALSO WANT DOCUMENTATION ON THE NUMBER AND CONDITIONS OF YOUR VICTIMS.

YOU MAY ALSO ACT AS A RUNNER TO NOTIFY THE IC OF THE NEED FOR ADDITIONAL RESOURCES OR UPDATE IC ON THE STATUS OF THE INCIDENT.

MAP RECORDER

RECORD ALL INCIDENTS FROM THE DAMAGE ASSESSMENT SURVEY FORM ON AN AREA MAP.

USE COLORED PENS TO INDICATE INCIDENT TYPE.

- RED FIRE
- BLUE MEDICAL
- GREEN SEARCH & RESCUE
- BLACK OTHER

KEEP TRACK OF WIND DIRECTION AND EXAMINE HOW IT WILL EFFECT INCIDENTS AND OPERATIONS.

INFORM THE INCIDENT COMMANDER OF ANY CHANGES THAT COULD EFFECT OPERATIONS OR INCIDENTS.