

HOUSEHOLD HAZARDOUS WASTE COLLECTION



2017



It is illegal to transport more than 15 gallons or 125 pounds of HHW per trip

Permanent HHW Facilities

Open NON-Holiday weekend Saturdays only.
For holiday schedule or additional details
see rcwaste.org or call (951) 486-3200.

Agua Mansa Permanent HHW Collection Facility

1780 Agua Mansa Road, Jurupa Valley, 92509
Open: 9:00 AM to 2:00 PM

Lake Elsinore Permanent HHW Collection Facility

512 North Langstaff Street, Lake Elsinore, 92530
Open the following Saturdays only, 9:00 AM to 2:00 PM
02/04/17, 03/04/17, 04/01/17, 05/06/17, 06/03/17, 07/08/17
08/05/17, 09/09/17, 10/07/17, 11/04/17, 12/02/17

Palm Springs Permanent HHW Collection Facility

1100 Vella Road, Palm Springs, 92264
Open: October - May 9:00 AM to 2:00 PM
June - September 7:00 AM to Noon

ABOP and PaintCare Facilities

Non-contaminated Antifreeze, Batteries, Oil (and Filters), and Paint (PaintCare products). Additional items may be accepted on a facility specific basis. For holiday schedule or additional details see rcwaste.org or call (951) 486-3200.

Murrieta Area

Open NON-Holiday weekend Saturdays only
County Road Yard 25315 Jefferson Avenue
Murrieta, 92562 Open: 9:00 AM to 2:00 PM

Beaumont - Hemet Area

Lamb Canyon Landfill 16411 Lamb Canyon Road
Beaumont, 92223
Open: Monday through Saturday from 6:00 AM to 4:30 PM

Moreno Valley Area

Badlands Landfill 31125 Ironwood Ave Moreno Valley, 92555
Open: Monday through Saturday from 6:00 AM to 4:30 PM

North - West Coachella Valley Area

Edom Hill Transfer Station 70-100 Edom Hill Road
Cathedral City, 92235 (760) 340-2113 **Call for hours of operation.**

Anza Area

Anza Transfer Station 4329 Terwilliger Road
Anza, 92539 (800) 755-8112 **Call for hours of operation.**



Temporary HHW Facilities

(9:00 AM to 2:00 PM)

Anza

03/25/17 08/19/17
Anza Transfer Station
40329 Terwilliger Road, Anza, 92539

Beaumont - Hemet Area

02/11/17 05/13/17 09/16/17 12/16/17
Lamb Canyon Landfill
16411 Lamb Canyon Road, Beaumont, 92223

Blythe

02/25/17 12/09/17
County Administration Center
260 North Broadway Street, Blythe, 92225

Cathedral City

02/11/17 5/20/17 9/23/17 12/02/17
Edom Hill Transfer Station
70-100 Edom Hill Road, Cathedral City 92235

Coachella

04/22/17 11/18/17
Bagdouma Park Swim Center parking lot
84625 Bagdad Avenue, Coachella, 92236

Corona

03/11/17 03/12/17
City Hall parking lot,
400 S. Vicentia Avenue, Corona, 92882

Desert Center

02/02/17
Desert Center Landfill
17-991 Kaiser Road, Desert Center, 92239

Good Hope/Meadowbrook

08/26/17
Goodmeadow Community Ctr./Fire Station #9
21565 Steele Peak Drive, Perris, 92570

Idyllwild

04/29/17 09/30/17
County Road Yard
25780 Johnson Road, Idyllwild, 92549

Indio

05/20/17 12/09/17
Date Festival Fairgrounds
46-350 Arabia Street, Gate 6, Indio, 92201

La Quinta

02/25/17 11/18/17
South City Hall parking lot
78495 Calle Tampico, La Quinta, 92253

Mead Valley

01/21/17 09/30/17
Mead Valley Community Center
21091 Rider Street, Perris, 92570

Mecca

04/08/17 10/14/17
Sheriff's Substation
91-260 Avenue 66, Mecca, 92254

Moreno Valley

04/15/17 10/21/17
City Maintenance Facility
15670 Perris Blvd., Moreno Valley, 92551

Murrieta

03/18/17 10/28/17
Murrieta City Hall parking lot
1 Town Square Murrieta, 92562

Pinyon Communities

04/22/17 10/21/17
Pinyon Flats Transfer Station
So. Pinyon Flats Road, Pinyon Pines, 92561

Temecula

01/28/17 09/23/17
Temecula Valley Entrepreneur's Exchange
43200 Business Park Drive, Temecula, 92590

ABOP Collection Centers

Non-contaminated Antifreeze, Batteries, Oil (and Filters), and Paint (Latex) ONLY. Call for more information and hours of operation.

East Coachella Valley Area

Coachella Valley Transfer Station 87-011A Landfill Road
Coachella, 92236 (760) 863-4094

Recycle Used Oil and Filters

State Certified Collection Centers
provide free recycling and offer
recycling incentives.

Find a Center near you:
(800) CLEAN-UP or

www.calrecycle.ca.gov/UsedOil/reports/centersearch/



Sharps Kiosk Locations

For additional information go to rcwaste.org



Riverside - Moreno Valley Metro Area

Riverside County Department of Waste Resources
14290 Frederick Street Moreno Valley, 92553
Available 24 hours daily

Beaumont - Hemet Area

Lamb Canyon Landfill
16411 Lamb Canyon Road, Beaumont, 92223
Open: Monday through Saturday from 6:00 am to 4:30 pm.
Check rcwaste.org for holiday schedule.

**Protect our workers.
Sharps must be in sealed
hard plastic containers
NO loose sharps!**

Riverside County Residents only.
Facilities are CLOSED during inclement weather or other hazardous conditions.
All sites will accommodate multiple trips if storage capacity allows.

Follow us on:



(800) 304-2226 or (951) 486-3200 rcwaste.org
This document is available in alternative formats upon request.
Post-consumer Recycled Content Paper Updated: 11/04/16



It is illegal to transport more than 15 gallons or 125 pounds of HHW per trip

ACCEPTABLE MATERIALS

These items are examples of materials accepted for FREE at any Permanent or Temporary HHW Collection



- Paint
- Paint thinner
- Epoxies
- Adhesives
- Wood stain
- Shellacs
- Resins
- Caulking
- Varnishes
- Wood preservative



- Used Oil & Filters
 - Gasoline & Diesel
 - Lighter fluid
 - Brake fluid
 - Antifreeze
 - Automotive chemicals
 - Kerosene lamp oil
 - Transmission fluid
- (Flammable liquid containers cannot be returned)*



- Batteries
- Smoke detectors
- Cooking Oil
- Fluorescent tube & bulbs
- Mercury devices
- Light Ballasts



- Televisions
- Monitors
- Computers
- Electronic devices



- Pesticides
- Poisons
- Moth balls
- Flea powder
- Herbicides
- Fertilizers
- Garden chemicals
- BBQ Propane tanks



- Cleaners
- Aerosol cans
- Drain openers
- Disinfectants
- Cosmetic chemicals
- Pool chemicals
- Laundry chemicals
- Degreasers



- Needles
- Sharps
- Unopened medication (except controlled substances)

**Protect our workers.
Sharps must be in sealed hard plastic containers.
NO loose sharps!**

UNACCEPTABLE MATERIALS

These services are for **residential use only**. Photo documentation may be required for excessive or suspected non-residential loads. The following waste **CANNOT** be accepted at **ANY** Riverside County HHW Collection:

- Ammunition and Explosives
- Business, Real Estate, Non-Profit, organization, or Out-of-County Waste
- Compressed Gas Cylinders greater than 40 pounds
- Asbestos
- Appliances, Tires, or Trash
- Containers larger than five gallons or weighing more than 50 pounds
- Controlled Substances/Infectious Waste (except sharps)
- Remediation or Radioactive Waste (except smoke detectors)

Business waste disposal information:

Riverside County Environmental Health Department, (888) 722-4234
(951) 358-5055 or www.rivcoeh.org/HazMat/hazwaste

Riverside County Residents only.
Facilities are CLOSED during inclement weather or other hazardous conditions.
All sites will accommodate multiple trips if storage capacity allows.

Do the Right Thing...Reduce Hazardous Waste

Buy Smart

Purchase non-toxic or less hazardous products in only the amount you need. Look for alternative products that don't contain hazardous ingredients.

Store Properly

Toxic products are poisonous. Don't put your family's health and safety at risk! Keep products out of reach of children and pets.

Use It Up

Finish all unused products and recycle the empty containers or share with friends and neighbors.

Protect Our Communities

NEVER throw HHW into your household garbage, toilets or sinks; never dump on the ground or pour down the storm drain. It is illegal and HHW can seep into the groundwater, waterways, lakes, and oceans, causing contamination of our drinking water, beach closures and health hazards to swimmers.

Dispose Properly

Dispose of HHW properly at a FREE Riverside County HHW collection near you!

Transportation Checklist

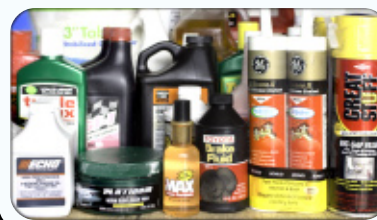
- **Label** containers to identify contents or keep in original container.
- **Remove** all valuables from trunk.
- **Transport** waste in a box placed in the trunk of your car or in the bed of your truck. (Keep items away from passengers)
- **Secure** leaky containers and loose loads.
- **Follow directions** once you reach the HHW collection site.

DROP & SHOP

Free Reuse Products

FREE to residents partially used household, yard, and vehicle care products. Products are in good condition and sometimes even unopened! Availability of free products varies.

Visit us at Lake Elsinore HHW, Agua Mansa HHW, Lamb Canyon Landfill, and Badlands Landfill, Saturdays only during normal collection hours. Future sites opening soon! Check website for update information.



City Provided Services

Additional hazardous waste services may be provided by your city. Contact your city to verify program policies.

Only Rain Down the Storm Drain

Stormwater Pollution Prevention Program
Call (800) 506-2555 to report illegal polluting of storm drains rcflood.org



Follow us on:



(800) 304-2226 or (951) 486-3200 rcwaste.org
This document is available in alternative formats upon request.
Post-consumer Recycled Content Paper Revised: 11/04/16