

Recorded in Official Records

County of Riverside

Larry W. Ward

Assessor, County Clerk & Recorder

Recording Requested by
and when Recorded Mail to:

City of Riverside
3900 Main Street
Riverside, CA 92522
Attn: City Surveyor



S	R	U	PAGE	SIZE	DA	MISC	LONG	RFD	COPY
1			7						3
M	A	L	465	426	PCOR	NCOR	SMF	NCHG	EXAM
T:							CTY	UNI	518

**Certificate of Correction
(Monument Substitution)**

30-

C
518

I, Vincent G. Kleppe, certify that I am a Licensed Land Surveyor of the State of California, and that Final Map 31671 as prepared by me, Vincent G. Kleppe, License No. 7181, and is filed in Book 408, Page 13 through 22, inclusive, of Final Maps, records of Riverside County, and that the following corrections to said map are made by me in accordance with Chapter 3, Article 7, Section 66469 through 66472 of the Subdivision Map Act.

Incorrect Data

Set 1" Iron Pipe tagged L.S. 7181 flush at all lot corners except at street frontage set lead and tag L.S. 7181 on top of curb property line produced.

- Indicates found monument as noted.
- Indicates set spike and tag L.S. 7181.
- ⊙ Indicates set 2" Iron Pipe or lead & tag L.S. 7181.

Correct Data

See Attached Exhibit "A", pages 1-5, made a part hereof, for the location of the following.

- INDICATES FOUND MONUMENT AS NOTED.
- INDICATES SET SPIKE AND WASHER, STAMPED "LS 7181".
- ⊙ INDICATES SET 2" I.P. W/ NAIL AND WASHER, STAMPED "LS 7181".
- ▽ INDICATES SET 1" IRON PIPE FLUSH, W/ PLASTIC PLUG "LS 7181".
- ▲ INDICATES SET NAIL AND TAG IN TOP OF WALL OR FLUSH IN CONCRETE FLAT WORK, STAMPED "LS 7181"; ALL POINTS SET ON LINE, OR PROJECTIONS THEREOF, UNLESS OTHERWISE NOTED.
- INDICATES SET NAIL AND WASHER IN WALL FOOTING, STAMPED "LS 7181"; ALL POINTS SET ON LINE, OR PROJECTIONS THEREOF, UNLESS OTHERWISE NOTED.

There are no fee property owners affected by this correction.

Dated: 12-15-09

By: Vincent Kleppe
L.S. No. 7181
License Expires 12/31/11

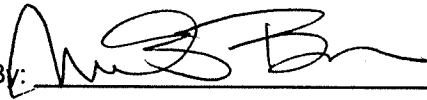


CC - 210

This certificate of correction has been examined by the undersigned and such examination disclosed that the only change(s) shown are in conformance with Section 66469 (a) thru (e) of the Subdivision Map Act and Title 18 (Subdivision Ordinance) of the City of Riverside Municipal Code.

Dated: 12/23/09

Mark S. Brown, City Surveyor
L.S. 5655
License expires 9/30/11

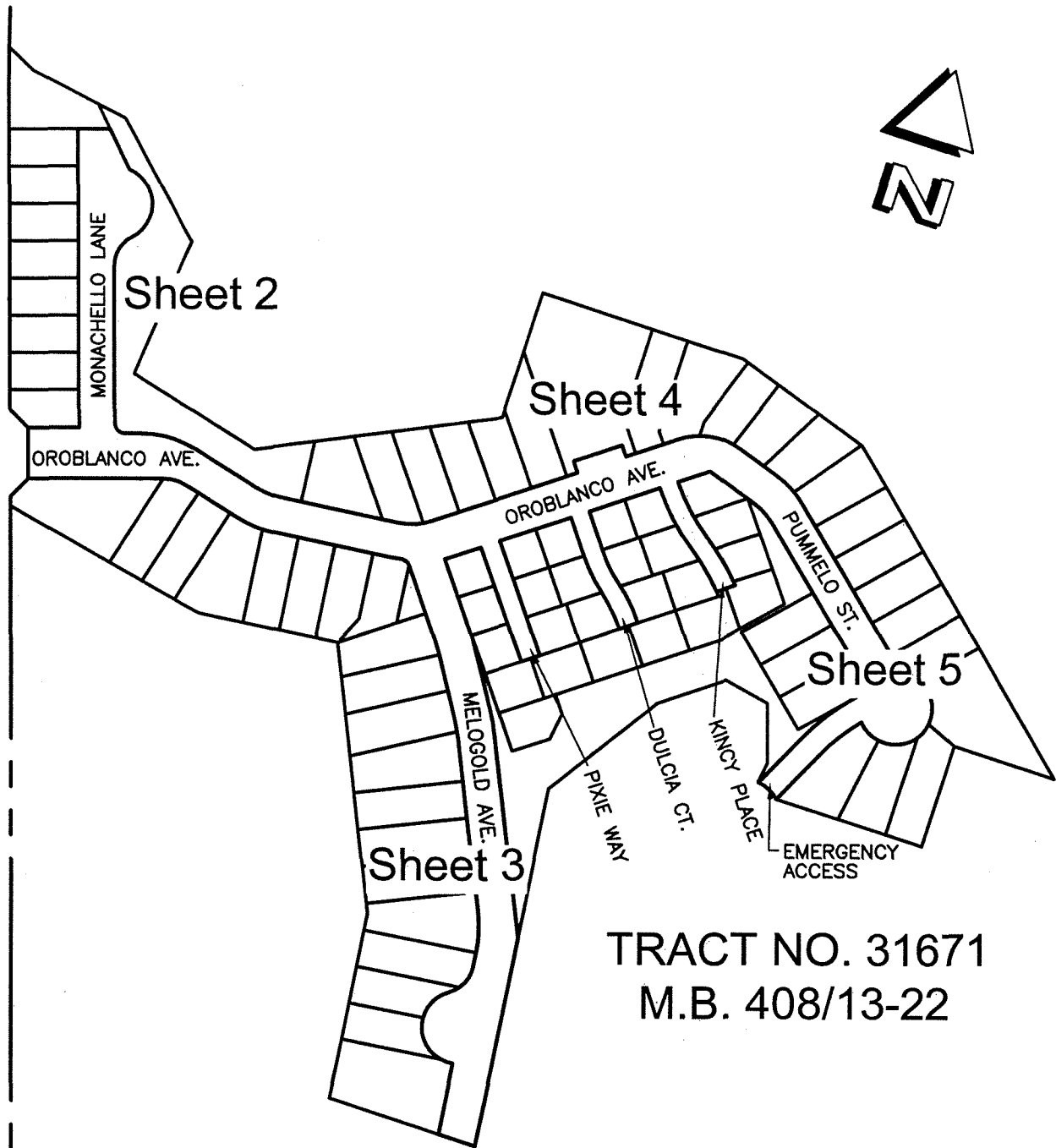
By: 



2010-0060656
02/09/2010 08:00A
2 of 7

CC-210

Exhibit "A"



TRACT NO. 31671
M.B. 408/13-22

CIVIL ENGINEERS AND LAND SURVEYORS
THE PRIZM GROUP
• LEICA HDS LASER SCANNING
• GPS & ROBOTIC SURVEYING
• GEOMATIC ENGINEERING
• CIVIL ENGINEERING
• LAND PLANNING
310 N. COTA ST. SUITE I, CORONA, CA 92880
PHONE: (951) 737-4406 • FAX: (951) 737-4407
tpg@the-prizm-group.com

CITY OF RIVERSIDE, CALIFORNIA CERTIFICATE OF CORRECTION - TRACT NO. 31671

SCALE: 1"=200'

DRAWN BY: BM
CHECKED BY: VGK

DATE: 10/10/08
DATE: 10/9/09

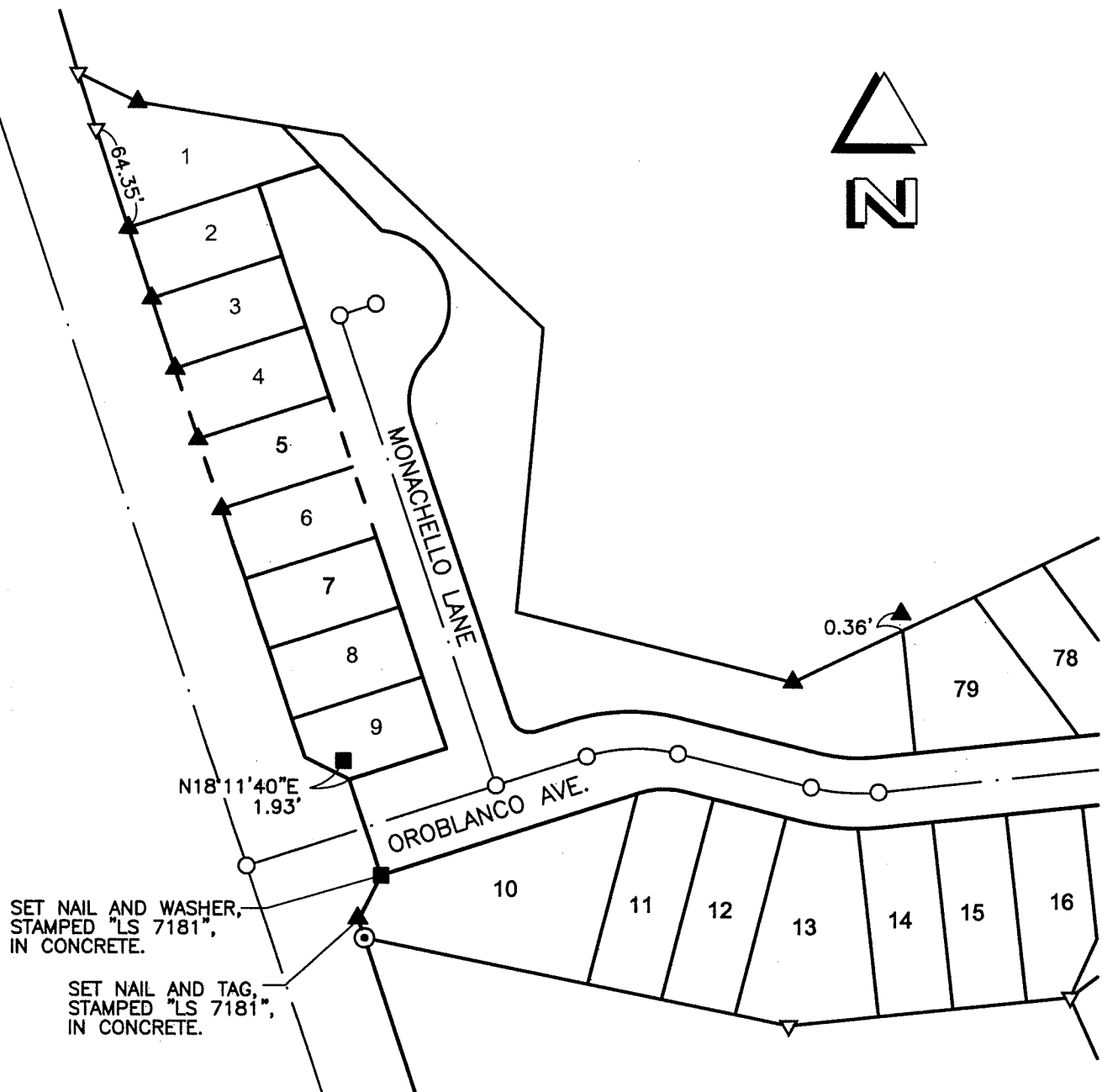
SHEET 1 OF 5

C.C.-210



2010-0060656
02/09/2010 08:00A
3 of 7

Exhibit "A"



SET NAIL AND WASHER,
STAMPED "LS 7181",
IN CONCRETE.

SET NAIL AND TAG,
STAMPED "LS 7181",
IN CONCRETE.

- INDICATES SET SPIKE AND WASHER, STAMPED "LS 7181".
- ⊙ INDICATES SET 2" I.P. W/ NAIL AND WASHER, STAMPED "LS 7181".
- ▽ INDICATES SET 1" IRON PIPE FLUSH, W/ PLASTIC PLUG "LS 7181".
- ▲ INDICATES SET NAIL AND TAG IN TOP OF WALL OR FLUSH IN CONCRETE FLATWORK, STAMPED "LS 7181"; ALL POINTS SET ON LINE, OR PROJECTIONS THEREOF, UNLESS OTHERWISE NOTED.
- INDICATES SET NAIL AND WASHER IN WALL FOOTING, STAMPED "LS 7181"; ALL POINTS SET ON LINE, OR PROJECTIONS THEREOF, UNLESS OTHERWISE NOTED.

CIVIL ENGINEERS AND LAND SURVEYORS
THE PRIZM GROUP
310 N. COTA ST. SUITE I, CORONA, CA 92880
PHONE: (951) 737-4406 • FAX: (951) 737-4407
tpg@the-prizm-group.com

CITY OF RIVERSIDE, CALIFORNIA CERTIFICATE OF CORRECTION - TRACT NO. 31671

SCALE: 1"=100'

DRAWN BY: BM
CHECKED BY: VGK

DATE: 10/10/08
DATE: 10/9/09

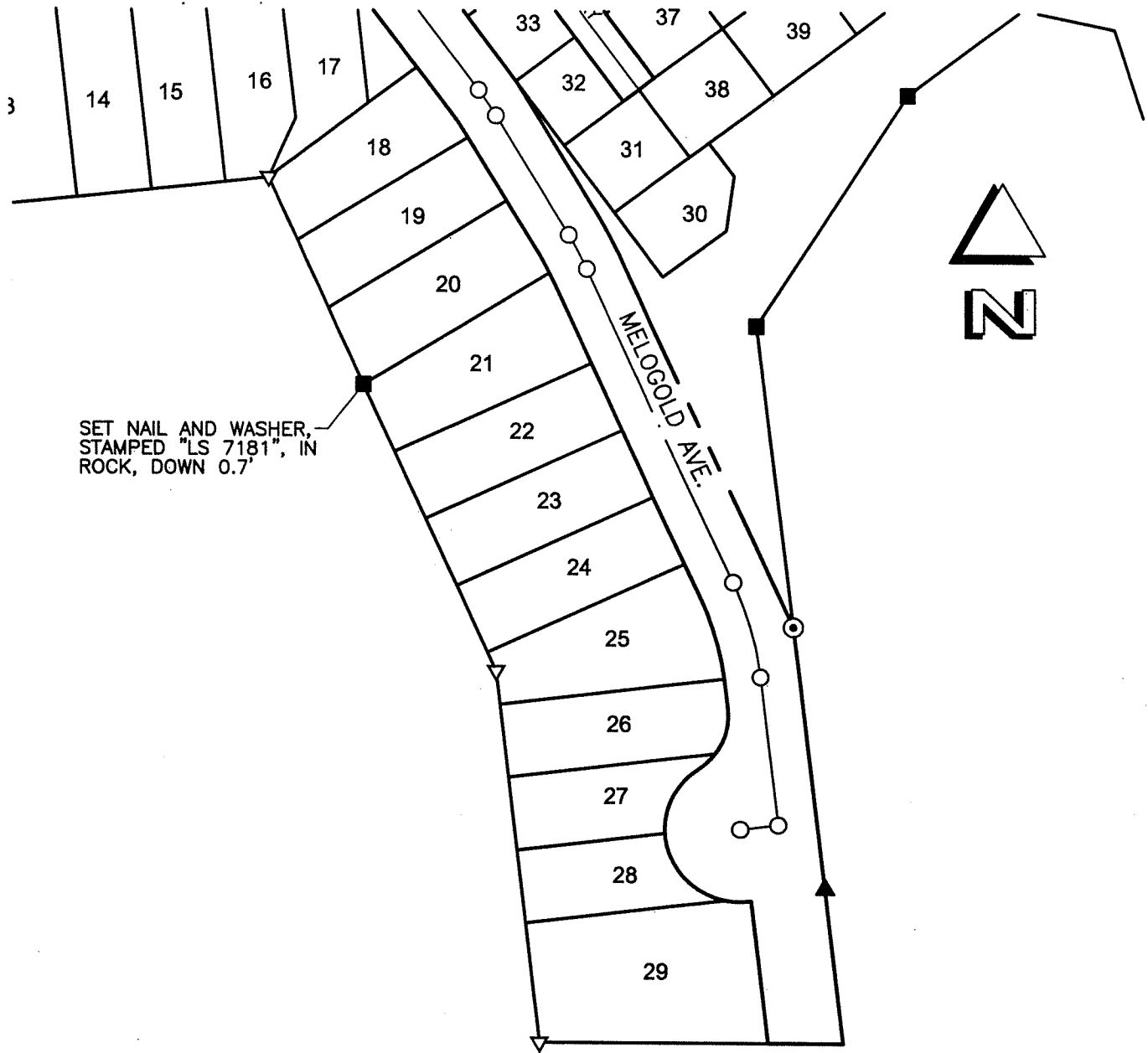
SHEET 2 OF 5

C.C.-210



2010-0060656
02/09/2010 08:00A
4 of 7

Exhibit "A"



SET NAIL AND WASHER,
STAMPED "LS 7181", IN
ROCK, DOWN 0.7'



- INDICATES SET SPIKE AND WASHER, STAMPED "LS 7181".
- ⊙ INDICATES SET 2" I.P. W/ NAIL AND WASHER, STAMPED "LS 7181".
- ▽ INDICATES SET 1" IRON PIPE FLUSH, W/ PLASTIC PLUG "LS 7181".
- ▲ INDICATES SET NAIL AND TAG IN TOP OF WALL OR FLUSH IN CONCRETE FLATWORK, STAMPED "LS 7181"; ALL POINTS SET ON LINE, OR PROJECTIONS THEREOF, UNLESS OTHERWISE NOTED.
- INDICATES SET NAIL AND WASHER IN WALL FOOTING, STAMPED "LS 7181"; ALL POINTS SET ON LINE, OR PROJECTIONS THEREOF, UNLESS OTHERWISE NOTED.

CIVIL ENGINEERS AND LAND SURVEYORS
THE PRIZM GROUP
 310 N. COTA ST. SUITE I, CORONA, CA 92880
 PHONE: (951) 737-4406 • FAX: (951) 737-4407
 tpg@the-prizm-group.com

CITY OF RIVERSIDE, CALIFORNIA CERTIFICATE OF CORRECTION - TRACT NO. 31671

SCALE: 1"=100'

DRAWN BY: BM
 CHECKED BY: VGK

DATE: 10/10/08
 DATE: 10/9/09

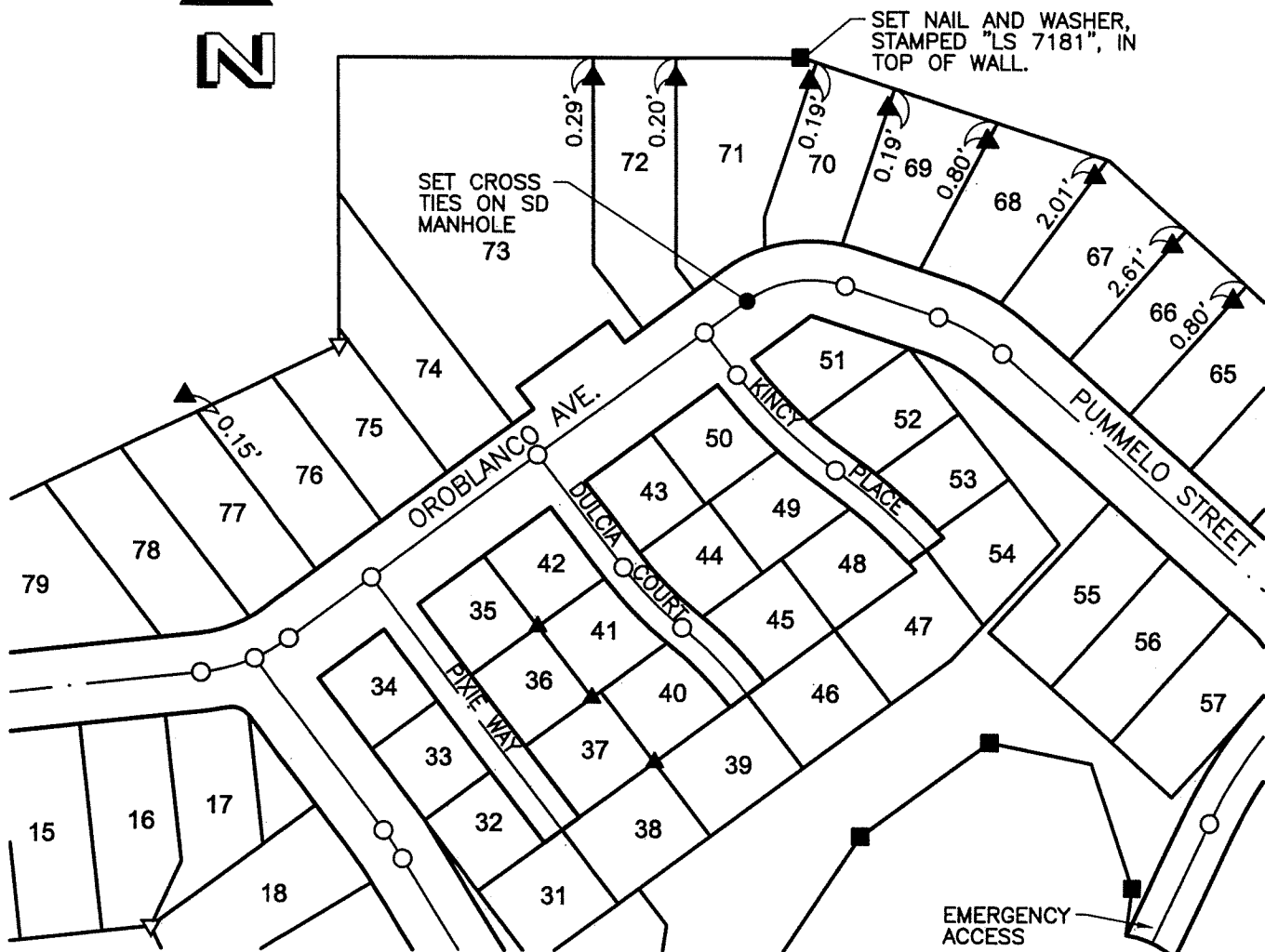
SHEET 3 OF 5

C.C.- 210



2010-0060656
 02/09/2010 08:00A
 5 of 7

Exhibit "A"



- INDICATES FOUND/SET MONUMENT AS NOTED.
- INDICATES SET SPIKE AND WASHER, STAMPED "LS 7181".
- ⊙ INDICATES SET 2" I.P. W/ NAIL AND WASHER, STAMPED "LS 7181".
- ▽ INDICATES SET 1" IRON PIPE FLUSH, W/ PLASTIC PLUG "LS 7181".
- ▲ INDICATES SET NAIL AND TAG IN TOP OF WALL OR FLUSH IN CONCRETE FLATWORK, STAMPED "LS 7181"; ALL POINTS SET ON LINE, OR PROJECTIONS THEREOF, UNLESS OTHERWISE NOTED.
- INDICATES SET NAIL AND WASHER IN WALL FOOTING, STAMPED "LS 7181"; ALL POINTS SET ON LINE, OR PROJECTIONS THEREOF, UNLESS OTHERWISE NOTED.

CIVIL ENGINEERS AND LAND SURVEYORS
THE PRIZM GROUP
 • LEICA ADS LASER SCANNING
 • GPS & ROBOTIC SURVEYING
 • GEOMATIC ENGINEERING
 • CIVIL ENGINEERING
 • LAND PLANNING
 310 N. COTA ST. SUITE I, CORONA, CA 92880
 PHONE: (951) 737-4406 • FAX: (951) 737-4407
 tpg@the-prizm-group.com

CITY OF RIVERSIDE, CALIFORNIA CERTIFICATE OF CORRECTION - TRACT NO. 31671

SCALE: 1"=100'

DRAWN BY: BM
 CHECKED BY: VGK

DATE: 10/10/08
 DATE: 10/10/08

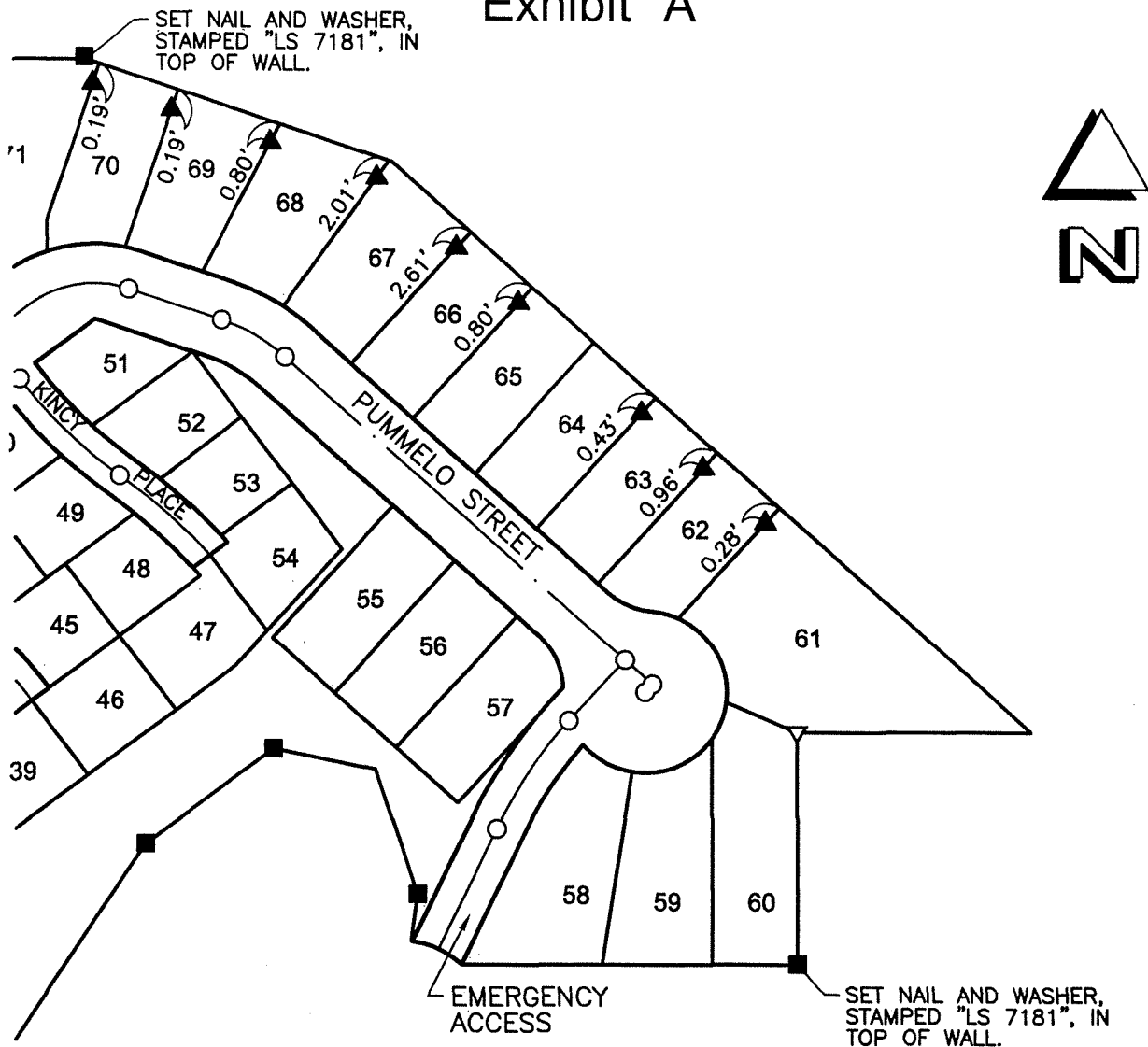
SHEET 4 OF 5

C.C.- 210



2010-0060656
 02/09/2010 08:00A
 6 of 7

Exhibit "A"



- INDICATES SET SPIKE AND WASHER, STAMPED "LS 7181".
- ⊙ INDICATES SET 2" I.P. W/ NAIL AND WASHER, STAMPED "LS 7181".
- ▽ INDICATES SET 1" IRON PIPE FLUSH, W/ PLASTIC PLUG "LS 7181".
- ▲ INDICATES SET NAIL AND TAG IN TOP OF WALL OR FLUSH IN CONCRETE FLATWORK, STAMPED "LS 7181"; ALL POINTS SET ON LINE, OR PROJECTIONS THEREOF, UNLESS OTHERWISE NOTED.
- INDICATES SET NAIL AND WASHER IN WALL FOOTING, STAMPED "LS 7181"; ALL POINTS SET ON LINE, OR PROJECTIONS THEREOF, UNLESS OTHERWISE NOTED.

CIVIL ENGINEERS AND LAND SURVEYORS
THE PRIZM GROUP
 310 N. COTA ST. SUITE I, CORONA, CA 92880
 PHONE: (951) 737-4406 • FAX: (951) 737-4407
 tpg@the-prizm-group.com

CITY OF RIVERSIDE, CALIFORNIA CERTIFICATE OF CORRECTION - TRACT NO. 31671

SCALE: 1"=100'

DRAWN BY: BM
 CHECKED BY: VGK

DATE: 10/10/08
 DATE: 10/10/08

SHEET 5 OF 5

C.C.-210



2010-0060656
 02/03/2010 08:00A
 7 of 7