



Recording Requested by
and when Recorded Mail to:

City of Riverside
3900 Main Street
Riverside, CA 92522
Attn: City Surveyor

S	R	U	PAGE	SIZE	DA	MISC	LONG	RFD	COPY
1			3						5
M	A	L	465	426	PCOR	NCOR	SMF	NCHG	EXAM
							T:	CTY	UNI
									512

Certificate of Correction
(Monument Substitution)

26-

C
512

I, Vincent G. Kleppe, certify that I am a Licensed Land Surveyor of the State of California, and that Final Map 30922-2 as prepared by me, Vincent G. Kleppe, License No. 7181, and is filed in Book 364, Page 83 through 88, inclusive, of Final Maps, records of Riverside County, and that the following corrections to said map are made by me in accordance with Chapter 3, Article 7, Section 66469 through 66472 of the Subdivision Map Act.

Incorrect Data

Set 1" Iron Pipe tagged L.S. 7181 flush at all lot corners except at street frontage set lead and tag L.S. 7181 on top of curb property line produced.

- Indicates found monument as noted.
- Indicates set spike and tag L.S. 7181.
- ⊙ Indicates set 2" Iron Pipe or lead & tag L.S. 7181.

Correct Data

See Attached Exhibit "A", pages 1-2, made a part hereof, for the location of the following.

- Indicates found monument as noted.
- Indicates set spike and washer, stamped "LS 7181".
- ⊙ Indicates set 2" I.P. w/nail and washer, stamped "LS 7181".
- ▽ Indicates set 1" I.P. flush, w/plastic plug "LS 7181".
- ▲ Indicates set nail and tag in top of wall or flush in concrete flat work, stamped "LS 7181"; all points set on line, or projections thereof, unless otherwise noted.

XXXX.XX' Indicates correct distance.

[XXXX.XX'] Indicates incorrect distance.

There are no fee property owners affected by this correction.

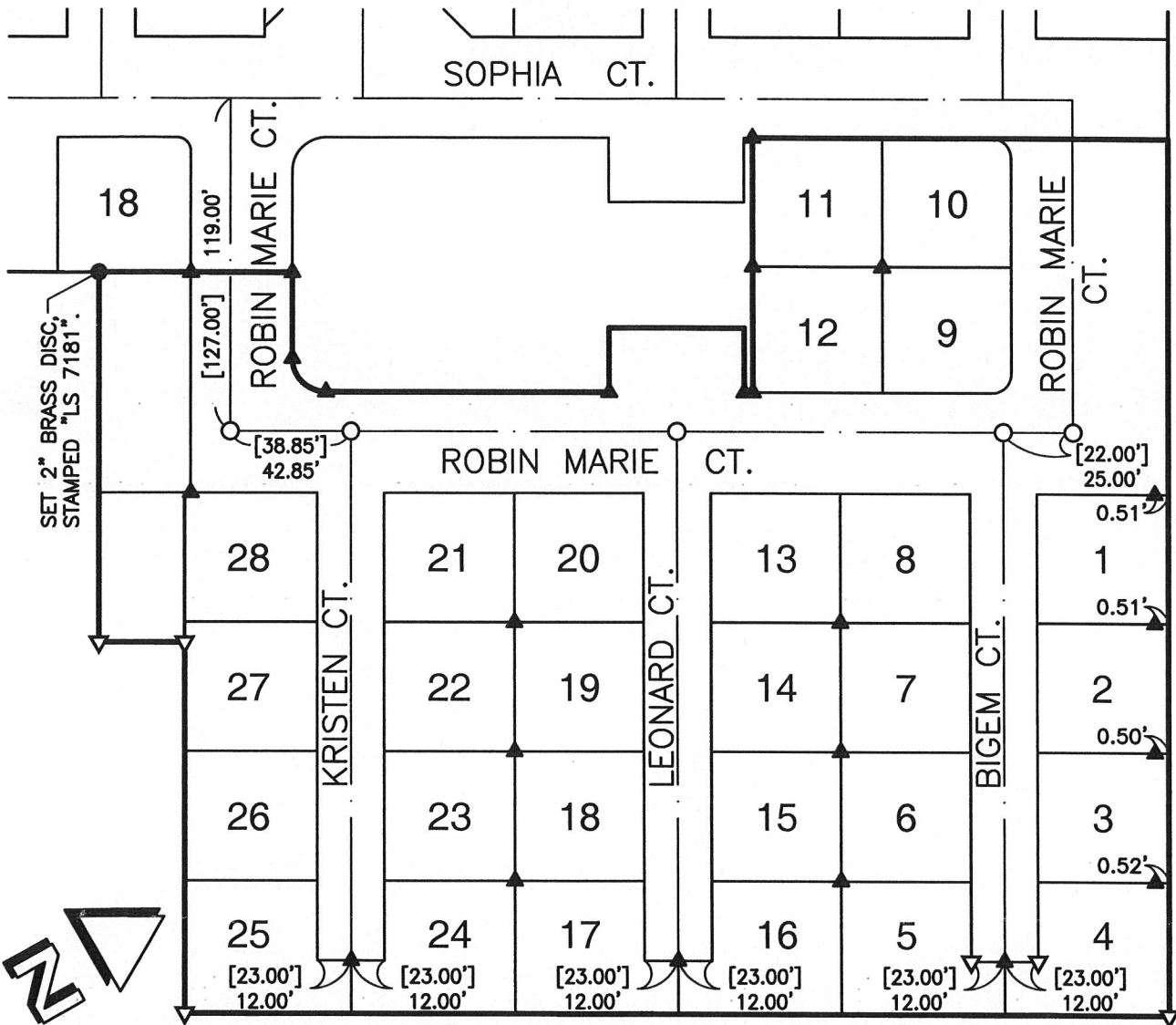
Dated: 6-13-11



By: Vincent Kleppe
L.S. No. 7181
License Expires 12/31/11

C.C.228

Exhibit "B"



TRACT NO. 30922-2
M.B. 364/83-88

- [] INDICATES INCORRECT DISTANCE.
- INDICATES FOUND/SET MONUMENT AS NOTED.
- INDICATES SET SPIKE AND WASHER, STAMPED "LS 7181".
- ▽ INDICATES SET 1" IRON PIPE FLUSH, W/ PLASTIC PLUG "LS 7181".
- ▲ INDICATES SET NAIL AND TAG IN TOP OF WALL OR FLUSH IN CONCRETE FLATWORK, STAMPED "LS 7181"; ALL POINTS SET ON LINE, OR PROJECTIONS THEREOF, UNLESS OTHERWISE NOTED.

CIVIL ENGINEERS AND LAND SURVEYORS
THE PRIZM GROUP
• CYRAX 3-D LASER SCANNING
• GPS & ROBOTIC SURVEYING
• GEOMATIC ENGINEERING
• CIVIL ENGINEERING
• LAND PLANNING
310 N. COTA ST. SUITE I, CORONA, CA 92880
PHONE: (951) 737-4406 • FAX: (951) 737-4407
tpg@the-prizm-group.com

CITY OF RIVERSIDE, CALIFORNIA CERTIFICATE OF CORRECTION - TRACT NO. 30922-2

SCALE: 1"=60'

DRAWN BY: BM
CHECKED BY: V GK

DATE: 10/13/08
DATE: 10/13/08

SHEET 1 OF 1

C.C.-228

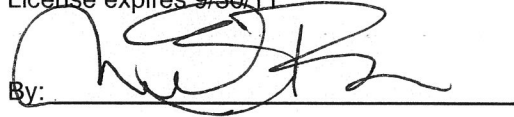


2011-0260011
06/13/2011 10:42A
2 of 3

This certificate of correction has been examined by the undersigned and such examination disclosed that the only change(s) shown are in conformance with Section 66469 (a) thru (e) of the Subdivision Map Act and Title 18 (Subdivision Ordinance) of the City of Riverside Municipal Code.

Dated: 4/11/2010

Mark S. Brown, City Surveyor
L.S. 5655
License expires 9/30/11

By: 



2011-0260011
06/13/2011 10:42A
3 of 3

C.G.228