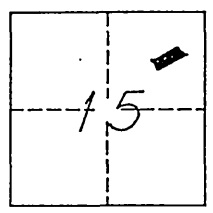


CORNER RECORD

COUNTY OF RIVERSIDE, CALIFORNIA

SEC. 15, T. 3S, R. 5W, SAN BERNARDINO MERIDIAN



CORNER TYPE:

- GOV'T. CORNER
- MEANDER
- RANCHO
- CONTROL
- PROPERTY
- OTHER

COORDINATES

N. _____
 E. _____
 ZONE _____
 ELEV. _____

DATE OF SURVEY: 4/30/92

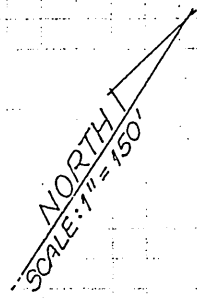
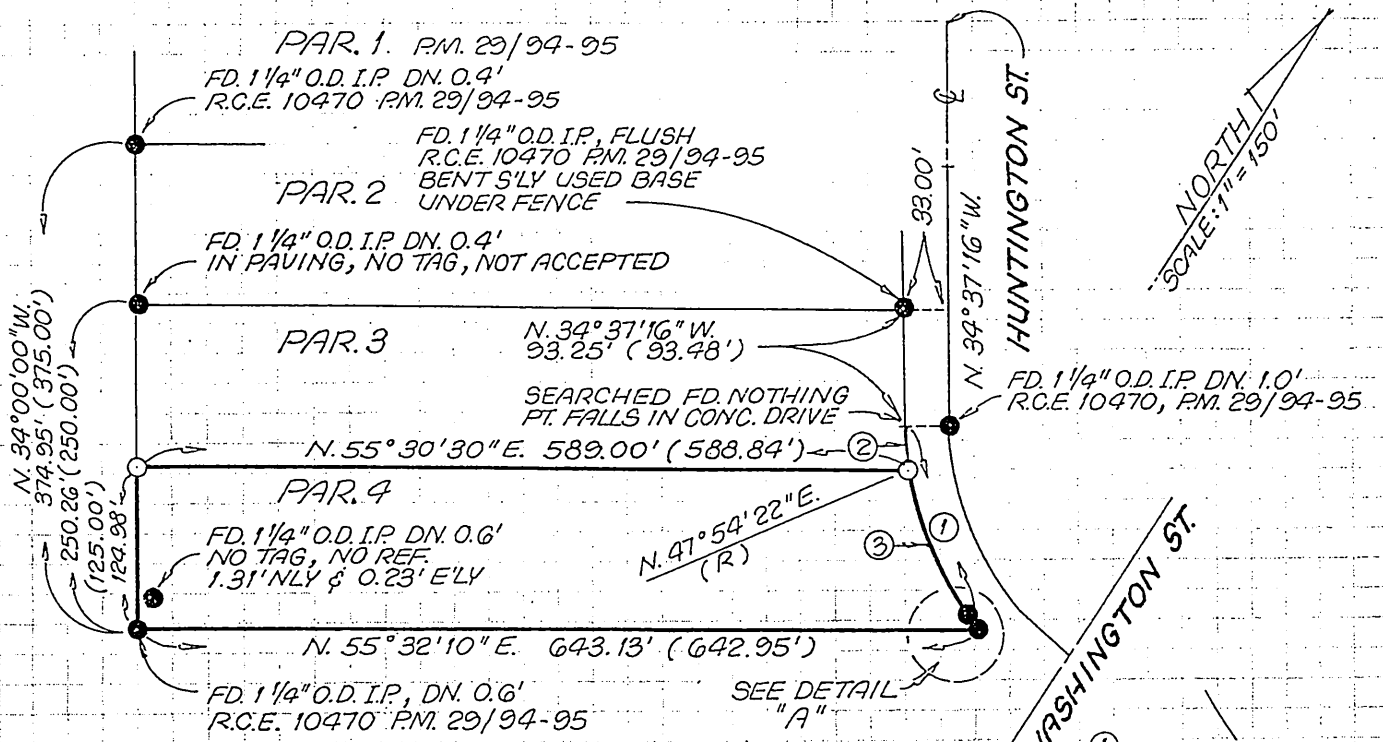
CORNER - LEFT AS FOUND FOUND AND TAGGED REESTABLISHED REBUILT

PHYSICAL DESCRIPTION OF CORNER FOUND: EVIDENCE USED TO IDENTIFY THE CORNER
SEE SHEET 2

PHYSICAL DESCRIPTION OF MONUMENTS REBUILT, PERPETUATED, OR RESET
1 1/4" O.D. IRON PIPE, TAGGED L.S. 4055, FLUSH.

A CORNER RECORD MAY BE USED TO REPORT THE RECOVERY OR PERPETUATION OF SURVEY MONUMENTS, OR TO SHOW THE REESTABLISHMENT OF MONUMENTS WHERE FIELD CONDITIONS AGREE SUBSTANTIALLY WITH RECORD

1. THE CORNER RECORD IS TO BE PREPARED BY A LICENSED LAND SURVEYOR OR REGISTERED CIVIL ENGINEER AND FILED WITH THE COUNTY SURVEYOR (OR COUNTY ENGINEER) OF THE COUNTY IN WHICH THE CORNER IS LOCATED.
2. A CORNER RECORD SHALL BE FILED WITHIN 90 DAYS OF THE DATE OF THE RECOVERY, USE OR REESTABLISHMENT OF A CORNER UNLESS THE CORNER IS TO BE SHOWN ON A RECORD OF SURVEY, PARCEL OR FINAL MAP DERIVED FROM THE SURVEY WHICH USED OR LOCATED SAID CORNER.
3. A CORNER RECORD MAY BE FILED TO SHOW THE PERPETUATION OF ANY EXISTING OR OBLITERATED CORNER OF THE SURVEY OF THE PUBLIC LANDS, AS SAID CORNERS ARE DEFINED IN THE "MANUAL OF INSTRUCTIONS FOR THE SURVEY OF PUBLIC LANDS OF THE UNITED STATES" OF THE BUREAU OF LAND MANAGEMENT. THE IDENTIFICATION OF SUCH CORNERS SHALL BE IF POSSIBLE IN ACCORDANCE WITH THE SYSTEM OF IDENTIFICATION GIVEN BY SAID MANUAL OF INSTRUCTIONS.
4. AT THE OPTION OF THE SURVEYOR OR ENGINEER, A CORNER RECORD MAY BE FILED FOR PROPERTY CORNERS, PROPERTY CONTROLLING CORNERS, REFERENCE MONUMENTS OR ACCESSORIES TO PROPERTY CORNERS WHEN THE COUNTY SURVEYOR OR COUNTY ENGINEER DETERMINES THAT NONE OF THE CONDITIONS REQUIRING A RECORD OF SURVEY EXIST AS OUTLINED IN SECTION 8762 OF THE LAND SURVEYORS ACT.
5. THE COUNTY SURVEYOR OR COUNTY ENGINEER SHALL EXAMINE THE CORNER RECORD WITHIN 20 DAYS FOR CONFORMANCE WITH SECTION 8773 OF THE LAND SURVEYORS ACT. UPON DETERMINATION THAT THE ABOVE LISTED CONDITIONS ARE SATISFIED AND THAT THE INFORMATION REQUIRED ELSEWHERE ON THIS FORM IS COMPLETE. THE COUNTY SURVEYOR OR ENGINEER SHALL FILE AND INDEX THE CORNER RECORD AND NOTIFY THE SURVEYOR/ENGINEER OF SUCH FILING.
6. CORNER RECORDS SUBMITTED FOR SURVEYS WHICH, UNDER SECTION 8762 OF THE LAND SURVEYORS ACT, REQUIRE A RECORD OF SURVEY SHALL BE RETURNED TO THE SURVEYOR OR ENGINEER TOGETHER WITH A STATEMENT OF THE REASON FOR SUCH RETURN.
7. CALIFORNIA COORDINATE SYSTEM DATA MAY BE SHOWN, BUT SHOULD BE ACCOMPANIED BY AN IDENTIFICATION OF THE SOURCE OF SUCH INFORMATION.
8. A SKETCH SHOWING REFERENCE TIES TO ACCESSORIES OR OTHER IDENTIFIABLE OBJECTS IN THE VICINITY OF THE CORNER SHALL BE PROVIDED WHERE APPROPRIATE. PHOTOGRAPHS AND/OR TOPOGRAPHY OF THE MONUMENT AND SURROUNDING AREA ARE ENCOURAGED.

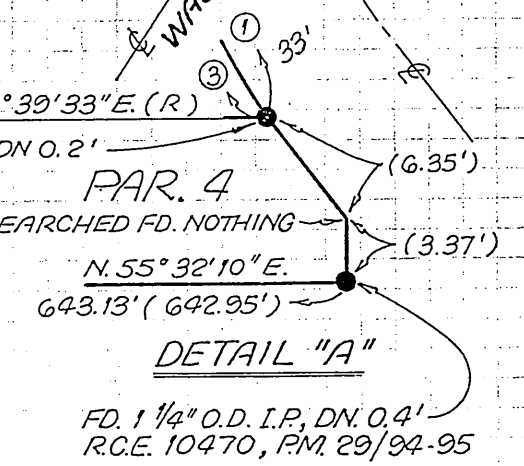


- ①
 $\Delta = 37^\circ 43' 11''$ ($37^\circ 38' 07''$)
 $R = 242.91'$
 $L = 159.91'$ ($159.56'$)
- ②
 $\Delta = 07^\circ 28' 22''$ ($07^\circ 27' 23''$)
 $R = 242.91'$
 $L = 31.68'$ ($31.61'$)
- ③
 $\Delta = 30^\circ 14' 49''$ ($30^\circ 10' 44''$)
 $R = 242.91'$
 $L = 128.23'$ ($127.95'$)

SURVEYOR'S NOTES

BASIS OF BEARINGS IS THE SOUTHWESTERLY LINE OF PARCELS 2 THRU 4, P.M. 29/94-95 BEING N. 34° 00' 00" W.

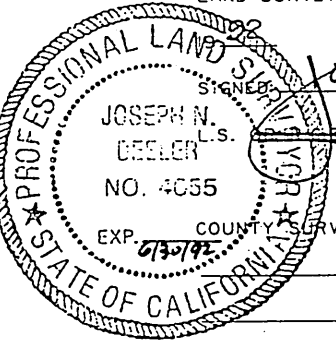
- FD MONUMENT AS NOTED
- SET 1 1/4" O.D. IRON PIPE, FLUSH TAGGED L.S. 4055



() RECORD DATA PER P.M. 29/94-95
APN 242-040-013

SURVEYOR'S CERTIFICATE

THIS CORNER RECORD WAS PREPARED BY ME OR UNDER MY DIRECTION IN CONFORMANCE WITH THE LAND SURVEYORS ACT ON MAY 1



SIGNED: Joseph N. Beeler
NO.: 4055 (EXP. 6/30/92)

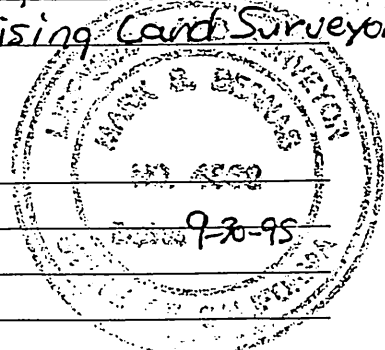
COUNTY SURVEYOR'S STATEMENT: _____

COUNTY SURVEYOR'S CERTIFICATE

THIS CORNER RECORD WAS RECEIVED June 9 19 92

AND EXAMINED AND FILED June 12 19 92

BY: Maui S. Bernas
TITLE: Supervising Land Surveyor



THIS FORM PREPARED BY THE LEAGUE OF CALIF. SURVEYING ORGANIZATIONS, SOUTHERN REGION