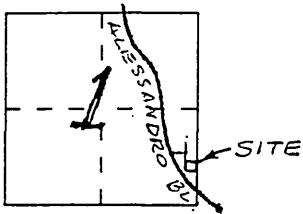


CORNER RECORD

Document Number 97-242

City of RIVERSIDE County of RIVERSIDE, California

Brief Legal Description LOT 6/7, M.B.228/42-43, IN SE 1/4 SE 1/4 SEC.1, T.3 S., R.5 W., S.B.M.
(Include: Sec., Twp., Rge., and Meridian or Rancho)



CORNER TYPE

Government Corner Control
 Meander Property
 Rancho Other
 Date of Survey 2/13/96

COORDINATES (Optional)

N. _____
 E. _____
 Zone _____ Datum _____
 Elev. _____

Corner — Left as found Found and tagged Established Reestablished Rebuilt

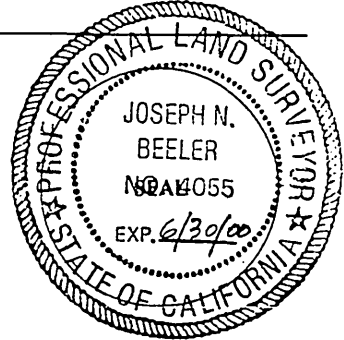
Identification and type of corner found: Evidence used to identify or procedure used to establish or reestablish the corner:
SEE PLAT ON PAGE 2

A description of the physical condition of the monument as found and as set or reset:
SEE PLAT ON PAGE 2

SURVEYOR'S STATEMENT

This Corner Record was prepared by me or under my direction in conformance with the Land Surveyors' Act on March 18 19 96.

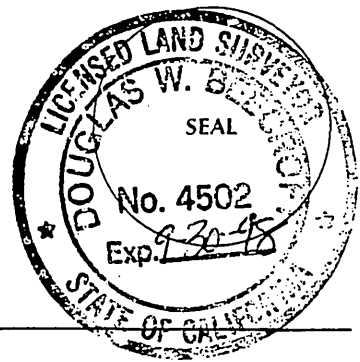
Signed Joseph N. Beeler L.S. ~~or R.C.E.~~ Number 4055



COUNTY SURVEYOR'S STATEMENT

This Corner Record was received June 3 19 97 and examined and filed Aug 13 19 97.

Signed D. W. Beecroft Title Senior L.S.

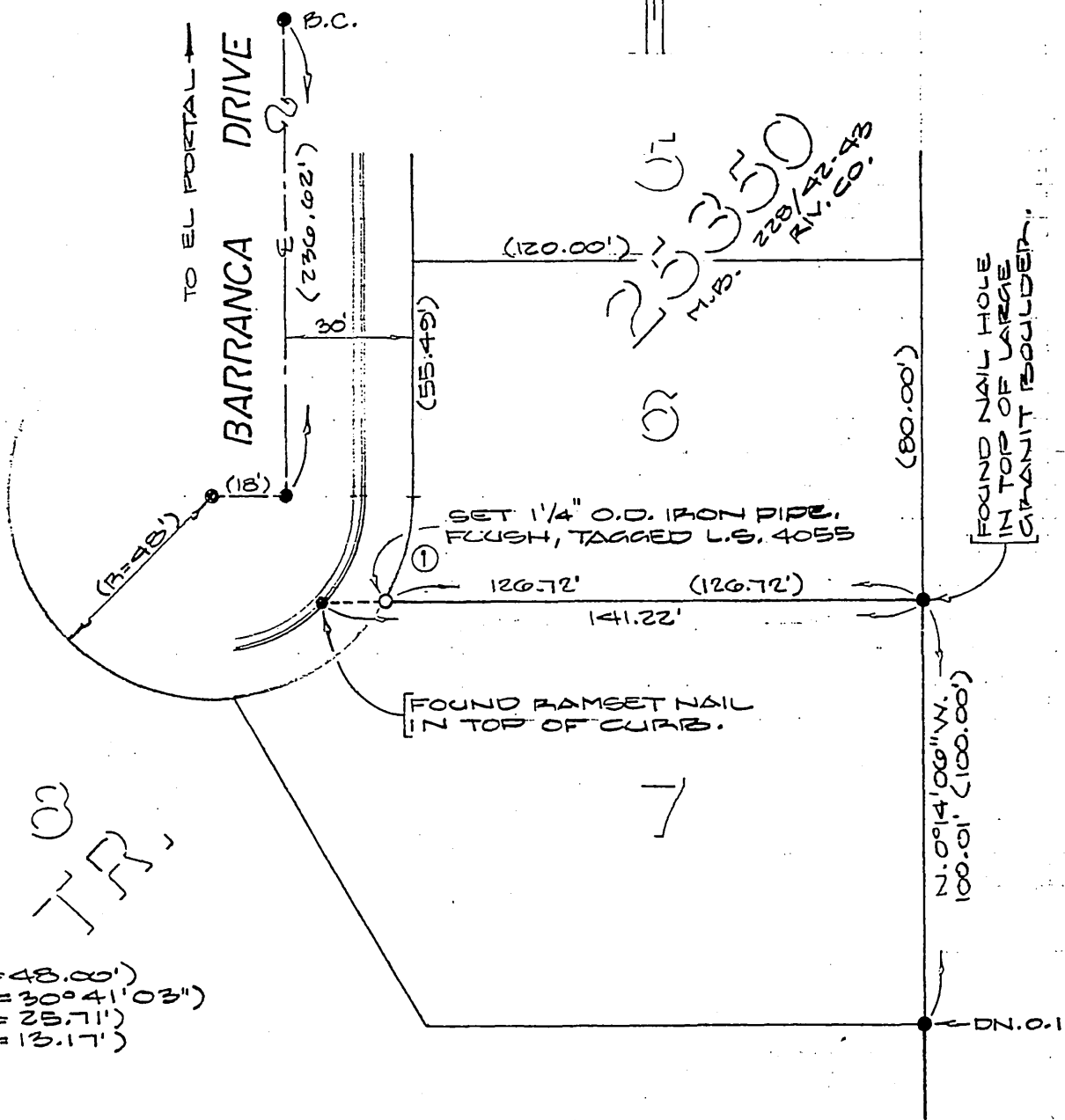
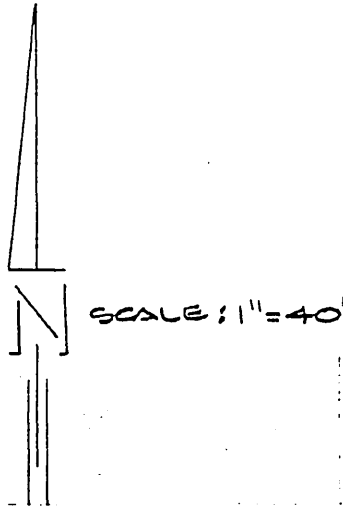


County Surveyor's Comment _____

**THE FILING OF THIS CORNER RECORD
 DOES NOT RELIEVE THE SURVEYOR
 FROM ANY RESPONSIBILITY OF THE
 FILING OF A RECORD OF SURVEY**

FOUND 1/4" O.D. IRON PIPE, FLUSH, TAGGED L.S. 5529 AT ALL POINTS SHOWN THIS ●, UNLESS OTHERWISE NOTED.

DATA SHOWN IN PARENTHESIS () IS RECORD PER M.B. 228/42-43 RIV. CO.



① (R=48.00')
(Δ=30° 41' 03")
(L=25.71')
(T=13.17')