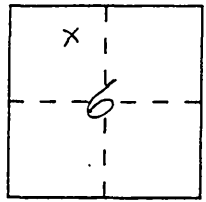


# CORNER RECORD

Document Number 97-318

City of RIVERSIDE County of RIVERSIDE, California

Brief Legal Description LOT 22, MB. 245/59-63, NE 1/4, NW 1/4, Sec. 6, T35, R4W, S.B.M.  
(Include: Sec., Twp., Rge., and Meridian or Rancho)



### CORNER TYPE

- Government Corner
- Meander
- Rancho
- Date of Survey 2/13/97
- Control
- Property
- Other

### COORDINATES (Optional)

N. \_\_\_\_\_  
 E. \_\_\_\_\_  
 Zone \_\_\_\_\_ Datum \_\_\_\_\_  
 Elev. \_\_\_\_\_

Corner — Left as found  Found and tagged  Established  Reestablished  Rebuilt

Identification and type of corner found: Evidence used to identify or procedure used to establish or reestablish the corner:  
FOUND STREET RIGHT OF WAY AND SUFFICIENT LOT 22, MB 245/59-63, CORNERS TO REESTABLISH MISSING CORNER.

A description of the physical condition of the monument as found and as set or reset:  
SET 1" O.D. IRON PIPE, FLUSH, TAGGED L.S. 4055 AS SHOWN ON PAGE 2 OF 2.

### SURVEYOR'S STATEMENT

This Corner Record was prepared by me or under my direction in conformance with the Land Surveyors' Act on July 3 1997.

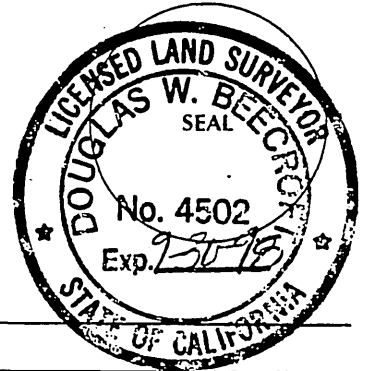
Signed Joseph N. Beeler L.S. or R.C.S. Number 4055



### COUNTY SURVEYOR'S STATEMENT

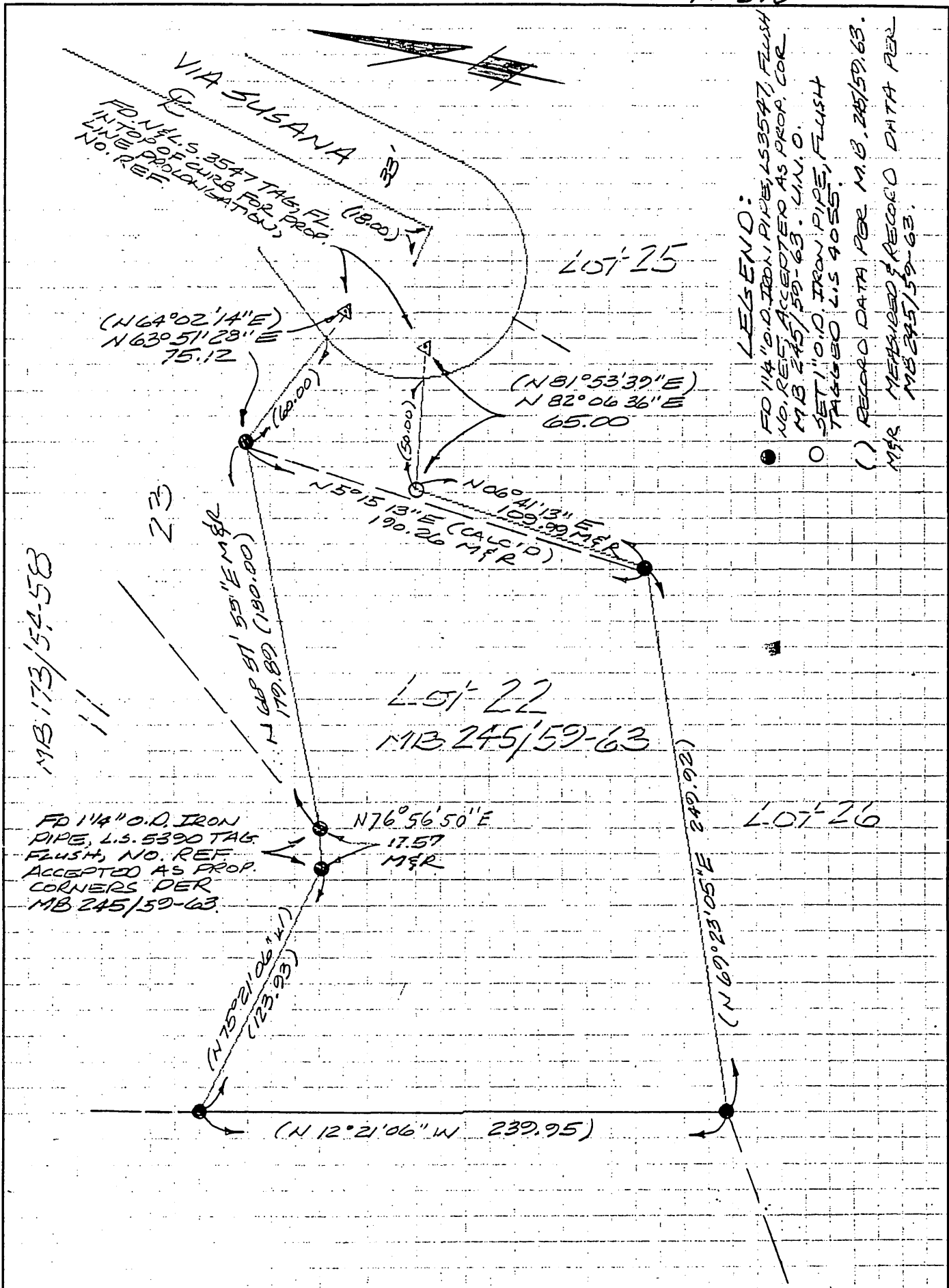
This Corner Record was received August 13 1997 and examined and filed Oct. 14 1997.

Signed D.W. Beecroft Title Senior L.S.



County Surveyor's Comment \_\_\_\_\_

THE FILING OF THIS CORNER RECORD DOES NOT RELIEVE THE SURVEYOR FROM ANY RESPONSIBILITY OF THE FILING OF A RECORD OF SURVEY



LEGEND:

- FD 1 1/4" O.D. IRON PIPE, L.S. 5347, FLUSH  
 NO. REF. ACCEPTED AS PROP. COR  
 MB 245/59-63. U.N.O.
- SET 1" O.D. IRON PIPE, FLUSH  
 TAGGED L.S. 9055.
- ( ) RECORD DATA PER M.B. 245/59-63.  
 M.F.R. MEASURED & RECORDED DATA PER  
 MB 245/59-63.