

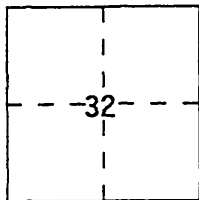
CORNER RECORD

Document Number 99-05

City of RIVERSIDE

County of RIVERSIDE, California

Brief Legal Description LOT 63 OF MAP BOOK 24, PAGES 16-17 IN SECTION 32 T2S / R5W S.B.B. & M
(Include: Sec., Twp., Rge., and Meridian or Rancho)



CORNER TYPE

- Government Corner
- Meander
- Rancho
- Date of Survey _____
- Control
- Property
- Other

COORDINATES (Optional)

N. _____
 E. _____
 Zone _____ Datum _____
 Elev. _____

Corner — Left as found Found and tagged Established Reestablished Rebuilt

Identification and type of corner found: Evidence used to identify or procedure used to establish or reestablish the corner:

SEE PAGE 2

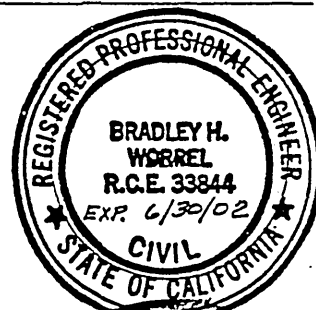
A description of the physical condition of the monument as found and as set or reset: _____

SEE PAGE 2

SURVEYOR'S STATEMENT

This Corner Record was prepared by me or under my direction in conformance with the Land Surveyors' Act on DECEMBER 28 19 98.

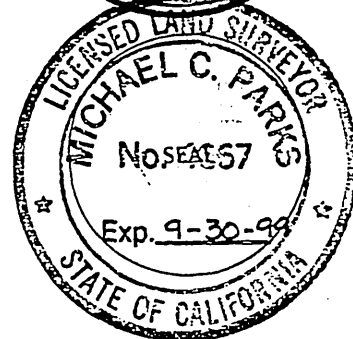
Signed Bradley H. Worrel L.S. OR R.C.E. Number 33844



COUNTY SURVEYOR'S STATEMENT

This Corner Record was received December 29 19 98 and examined and filed January 20 19 99.

Signed Michael C. Parks Title Senior Land Surveyor



County Surveyor's Comment _____

THE FILING OF THIS CORNER RECORD
DOES NOT RELIEVE THE SURVEYOR
FROM ANY RESPONSIBILITY OF THE
FILING OF A RECORD OF SURVEY

52-4

(- RECORD PER M.B. 24/16-17 -)

[RECORD PER M.B. 40/14-15]

([REC PER M.B. 40/14-15 & M.B. 24/16-17])

BASIS OF BEARINGS

BEARINGS SHOWN HEREON ARE BASED ON THE CENTERLINE OF GRANADA AVE., TAKEN AS N 89° 43' 30" E PER M.B. 24/16-17.

● INDICATES FD. 1" I.P. w/ R.C.E. 9876 TAG. FLUSH PER M.B. 40/14-15 UNLESS OTHERWISE NOTED

▲ INDICATES NOTHING FOUND, NOTHING SET PER M.B. 24/16-17 & M.B. 40/14-15

○ INDICATES SET 1" I.P. TAGGED, R.C.E. 33844 FLUSH, UNLESS OTHERWISE NOTED

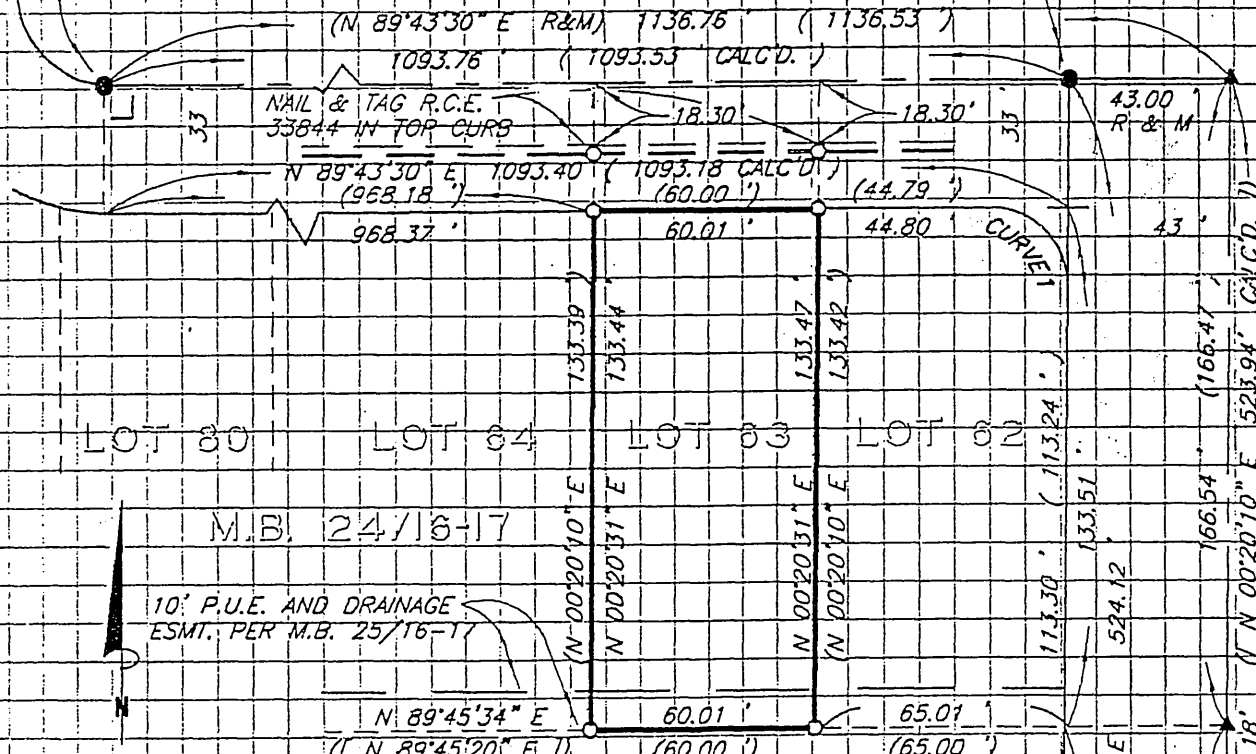
CURVE DATA "CURVE 1"

	DELTA	R	L	T
RECORD	90°36'40"	20.00	31.63	20.21
MEASURED	90°37'01"	20.00	31.63	20.22

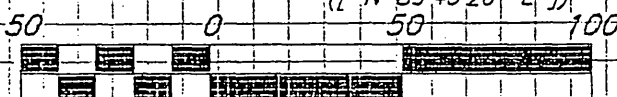
Fd. 2" I.P. Dn. 1.0' in Capped Monument Well Conc Filled w/Nail in Center Per M.B. 24/17

Fd. P.K. Nail & Riv. City Engineer Tag Per C.R.F.B. 696/56

GRANADA AVE.



10' P.U.E. AND DRAINAGE ESMT. PER M.B. 25/16-17



Scale 1" = 50 ft

Fd. 1-1/4" I.P. Flush Asphalt Filled w/Nail in Center Per C.R.F.B. 951/13

[N 89°47'10" E 225.32']
 [N 89°47'53" E 225.27']

EL MOLINO AVE.

STREETER AVE.