

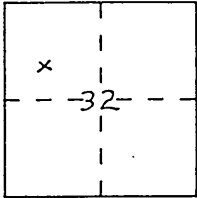
CORNER RECORD

Document Number 00-186

City of RIVERSIDE County of RIVERSIDE, California

Brief Legal Description LOT 31 TRACT NO. 3025 MB 55/02, B3. IN N.W. 1/4 SEC 32 T.2S., R. 5W. S.B. M.  
(Include: Sec., Twp., Rge., and Meridian or Rancho)

W.O. 4709 STAMEN E.P.F.B. 127/14,15



CORNER TYPE

- Government Corner
- Meander
- Rancho
- Date of Survey 4/20/2000
- Control
- Property
- Other

COORDINATES  
(Optional)

N. \_\_\_\_\_  
 E. \_\_\_\_\_  
 Zone \_\_\_\_\_ Datum \_\_\_\_\_  
 Elev. \_\_\_\_\_

Corner — Left as found  Found and tagged  Established  Reestablished  Rebuilt

Identification and type of corner found: Evidence used to identify or procedure used to establish or reestablish the corner:

SEE SKETCH ON REVERSE SIDE

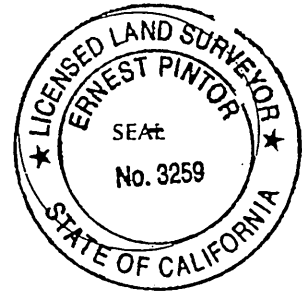
A description of the physical condition of the monument as found and as set or reset:

SEE SKETCH ON REVERSE SIDE

SURVEYOR'S STATEMENT

This Corner Record was prepared by me or under my direction in conformance with the Land Surveyors' Act on MAY 8 2000

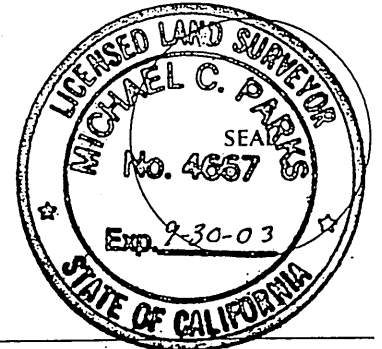
Signed Ernest Pintor L.S. or R.C.E. Number 3259  
EXPIRATION DATE: 6/30/2000



COUNTY SURVEYOR'S STATEMENT

This Corner Record was received May 9 2000 and examined and filed June 15 2000

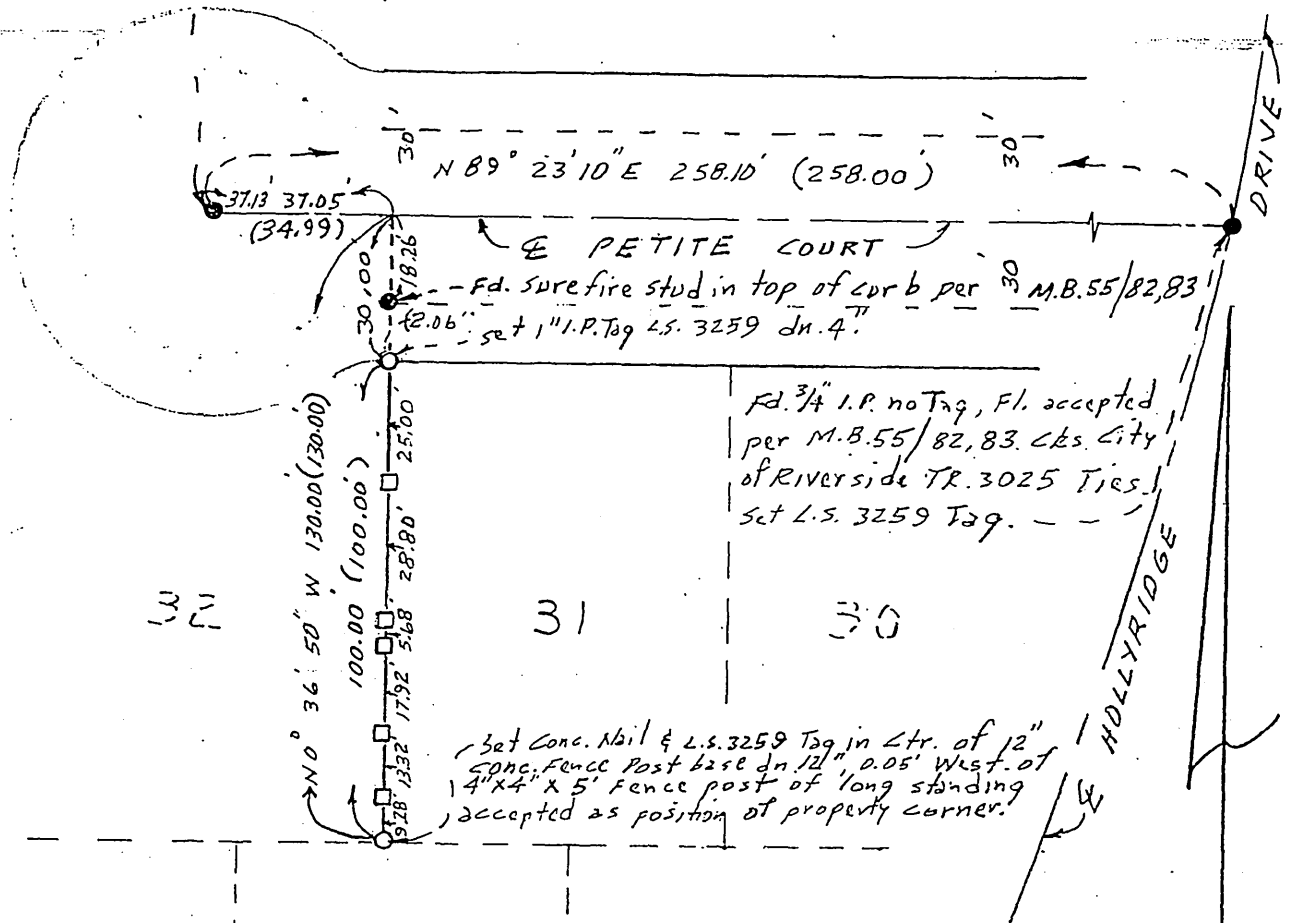
Signed Michael C. Parks Title Senior Land Surveyor



County Surveyor's Comment \_\_\_\_\_

THE FILING OF THIS CORNER RECORD  
DOES NOT RELIEVE THE SURVEYOR  
FROM ANY RESPONSIBILITY OF THE  
FILING OF A RECORD OF SURVEY

Fd. 1/4 I.P. Tagged R.C.E. 2876 Fl. per M.B. 55/82,83 Cks  
 City of Riverside TR. 3025 Ties.



27                      28                      29

M.B. 55 / 82, 83

SCALE: 1" = 40'

SURVEYOR'S NOTES

- INDICATES MONUMENTS FOUND AS NOTED.
- INDICATES SET 1" I.P. TAGGED L.S. 3259 DN. 4" EXCEPT AS NOTED.
- INDICATES SET 1" x 2" WITH NAIL UP 2", ON PROPERTY LINE.

BASIS OF BEARINGS

TAKEN FROM THE E OF PETITE COURT PER M.B. 55/82,83 BEING N 89° 23' 10" E.