

CORNER RECORD

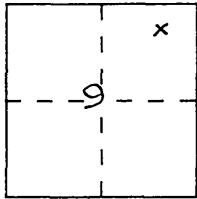
Document Number 00-220

City of RIVERSIDE

County of RIVERSIDE, California

Brief Legal Description PAR. 3 R.S. 49/46 IN N.E. 1/4 SEC. 9 T. 3 S., R. 6 W. S.B.M.
(Include: Sec., Twp., Rge., and Meridian or Rancho)

W.O. 4714 MULVIHILL E.P.F.B. 127/20, 21



CORNER TYPE

COORDINATES
(Optional)

Government Corner Control
Meander Property
Rancho Other
Date of Survey 7/7, 8, 21/00

N. _____
E. _____
Zone _____ Datum _____
Elev. _____

Corner — Left as found Found and tagged Established Reestablished Rebuilt

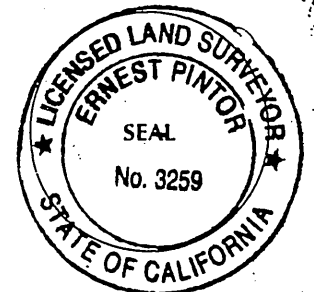
Identification and type of corner found: Evidence used to identify or procedure used to establish or reestablish the corner:
(SEE SKETCH ON REVERSE SIDE)

A description of the physical condition of the monument as found and as set or reset:
(SEE SKETCH ON REVERSE SIDE)

SURVEYOR'S STATEMENT

This Corner Record was prepared by me or under my direction in conformance with the Land Surveyors' Act on JULY 25, 2000 19.

Signed Ernest Pintor L.S. or R.C.E. Number 3259
EXPIRATION DATE: 6/30/04



COUNTY SURVEYOR'S STATEMENT

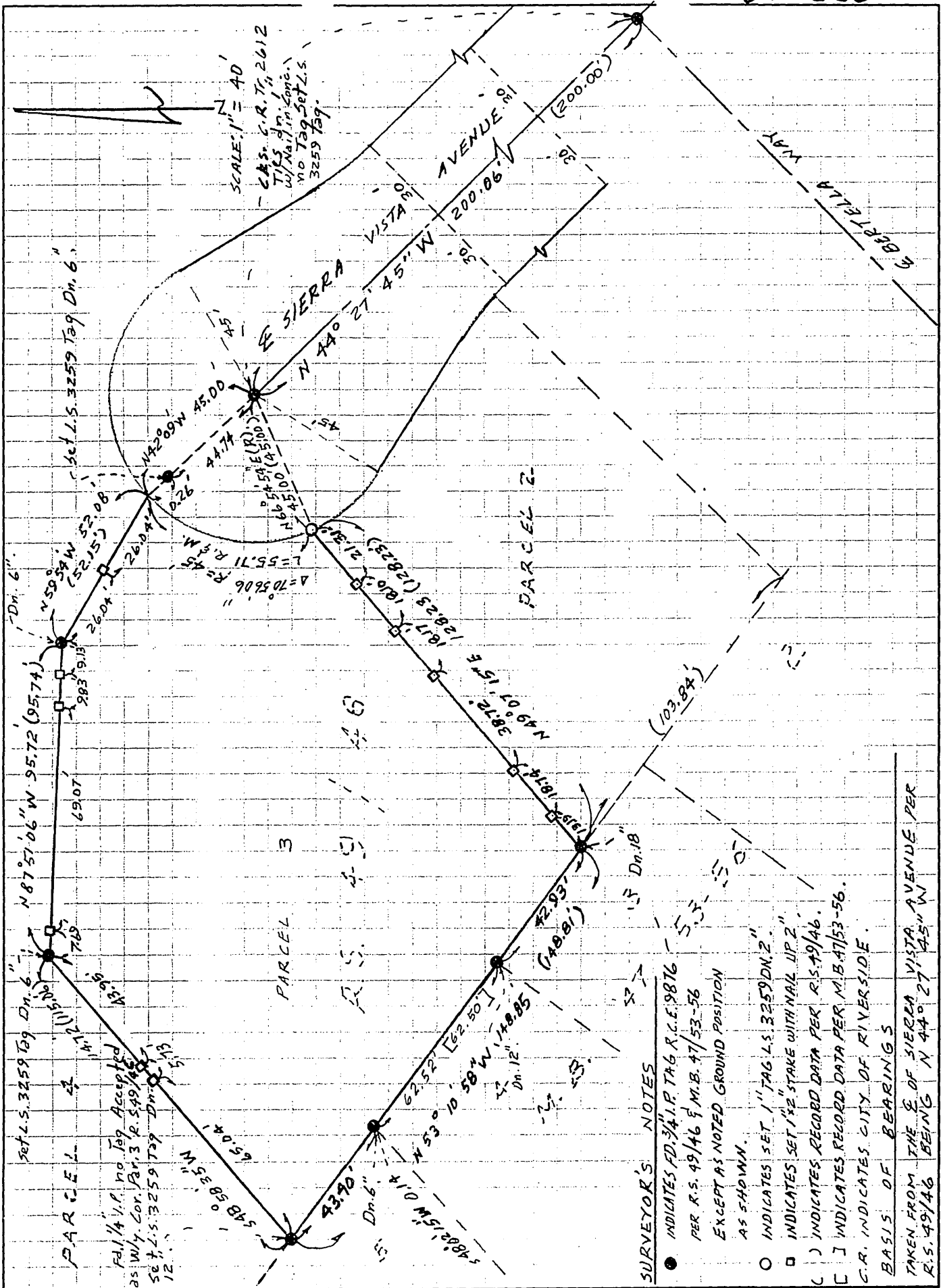
This Corner Record was received 7-25, 2000 19 and examined and filed August 3, 2000 19.

Signed Michael C. Parks Title Senior Land Surveyor



County Surveyor's Comment _____

THE FILING OF THIS CORNER RECORD
DOES NOT RELIEVE THE SURVEYOR
FROM ANY RESPONSIBILITY OF THE
FILING OF A RECORD OF SURVEY



SURVEYOR'S NOTES

- INDICATES FD. 34 I.P. TAG R.C.E. 9876 PER R.S. 49/46 & M.B. 47/53-56 EXCEPT AS NOTED GROUND POSITION AS SHOWN.
 - INDICATES SET 1" TAG L.S. 3259 TAG DN. 6"
 - INDICATES SET 1/2" STAKE WITH NAIL UP. 2"
 - () INDICATES RECORD DATA PER R.S. 49/46.
 - [] INDICATES RECORD DATA PER M.B. 47/53-56.
- C.R. INDICATES CITY OF RIVERSIDE.
 BASIS OF BEARINGS
 TAKEN FROM THE E. OF SIERRA VISTA AVENUE PER
 R.S. 49/46 BEING N 44° 27' 45" W